

INFORMAZIONI TECNICHE

TECHNICAL INFORMATION

INFORMATIONS TECHNIQUES

TECHNISCHE INFORMATIE

INFORMACIÓN TÉCNICA

US FORMAT

MORTISE LOCK
FOR WOOD AND METAL DOORS



MORTISE LOCKS for WOOD OR METAL DOORS

ANSI CODE - FUNCTION
PBA CODE*

OPERATION

OUTSIDE INSIDE

F01 - PASSAGE 2MM.LCK.OA00.00 - backset 2 1/2" **	 SECURITY EGRESS	LATCHBOLT OPERATED BY LEVER FROM EITHER SIDE AT ALL TIMES
F04 - OFFICE / CORRIDOR 2MM.LCK.OF00.00 - backset 2 1/2" **	 SECURITY EGRESS	LATCHBOLT OPERATED BY LEVER FROM EITHER SIDE, EXCEPT WHEN OUTSIDE LEVER IS LOCKED BY STOP BUTTONS. UNLOCK BY KEY OUTSIDE OR LEVER INSIDE.
F04 + F13 - OFFICE / ENTRY 2MM.LCK.OI00.00 - backset 2 1/2" **	 SECURITY EGRESS	LATCHBOLT OPERATED BY LEVER FROM EITHER SIDE, EXCEPT WHEN OUTSIDE LEVER IS LOCKED BY KEY OR THUMBTURN FROM INSIDE. UNLOCK BY KEY OUTSIDE OR THUMBTURN / LEVER FROM INSIDE.
F05 - CLASSROOM 2MM.LCK.0G00.00 - backset 2 1/2" **	 SECURITY EGRESS	LATCHBOLT OPERATED BY LEVER FROM EITHER SIDE, EXCEPT WHEN OUTSIDE LEVER IS LOCKED BY OUTSIDE KEY. UNLOCK BY KEY OUTSIDE OR LEVER INSIDE.
F07 - STOREROOM 2MM.LCK.OP00.00 - backset 2 1/2" **	 SECURITY EGRESS	LATCHBOLT OPERATED BY KEY OUTSIDE OR BY OPERATING LEVER INSIDE. OUTSIDE LEVER IS ALWAYS INOPERATIVE.
F13 - DORMITORY 2MM.LCK.OE00.00 - backset 2 1/2" **	 SECURITY EGRESS	LATCHBOLT OPERATED BY LEVER FROM EITHER SIDE, EXCEPT WHEN OUTSIDE LEVER IS LOCKED BY KEY OR THUMBTURN FROM INSIDE AND THE DEADBOLT IS PROJECTED. UNLOCK BY KEY OUTSIDE OR THUMBTURN OR LEVER FROM INSIDE WHICH RETRACT BOTH BOLTS SIMULTANEOUSLY.
F19 - PRIVACY 2MM.LCK.0M00.00 - backset 2 1/2" **	 SECURITY EGRESS	LATCHBOLT OPERATED BY LEVER FROM EITHER SIDE, EXCEPT WHEN OUTSIDE LEVER IS LOCKED BY INSIDE THUMBTURN AND THE DEADBOLT IS PROJECTED. UNLOCK BY KEY OUTSIDE OR LEVER FROM INSIDE WHICH RETRACT BOTH BOLTS SIMULTANEOUSLY.



STAINLESS STEEL FACEPLATE INCLUDED



STAINLESS STEEL STRIKE PLATE INCLUDED

* Lever handles, thumbturns and cylinders not included ** Backset 2 3/4" available on request

MORTISE LOCK

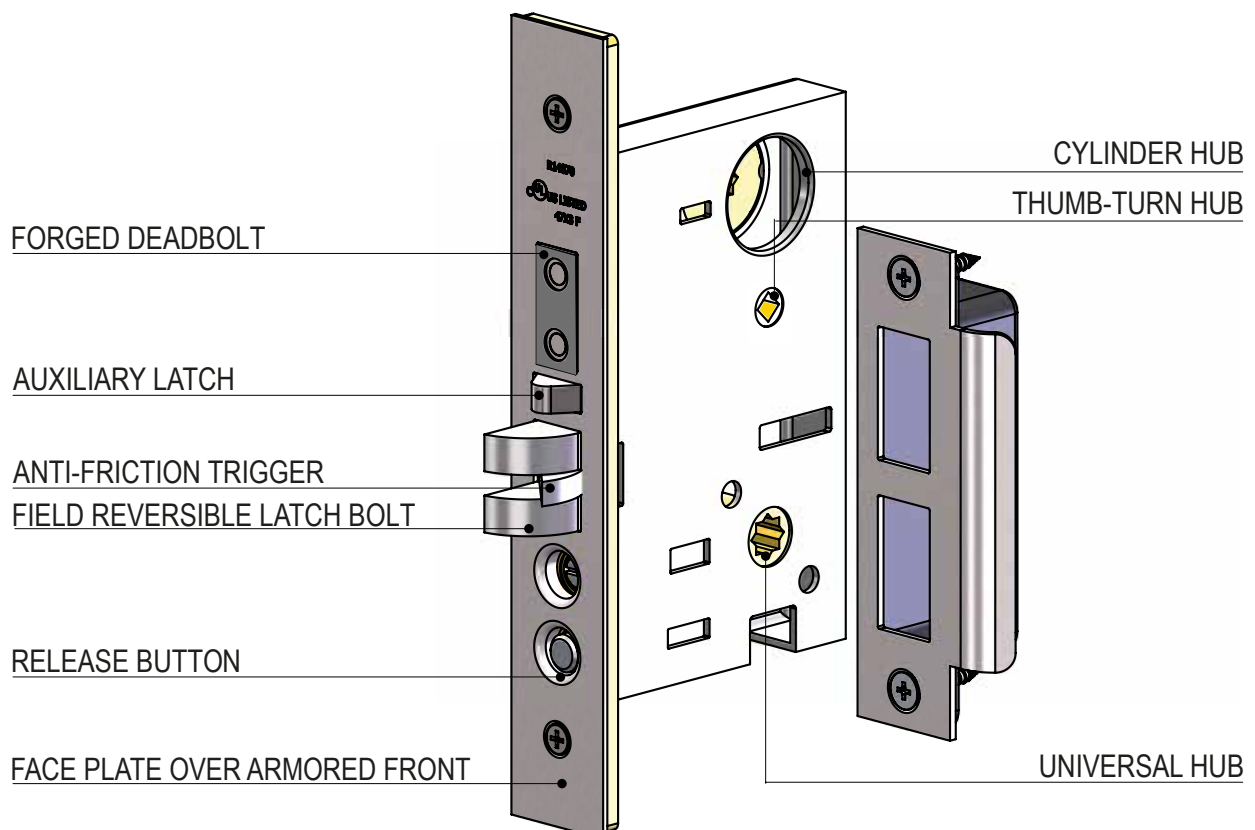
PBA 2MM.LCK SERIES MORTISE LOCKS FOR SOLID DOORS ARE ENGINEERED FOR DURABILITY AND OPTIMUM SECURITY. ALL LOCK CASES ARE CONSTRUCTED WITH QUALITY METAL WORKING PARTS, ENSURING THE LONG LASTING AND TROUBLE FREE OPERATION.

GRADE 1 ACCORDINGLY TO ANSI/BHMA 156.13 - 2005 AND UL – ULC LISTED THE 2MM.LCK MORTISE LOCKS CAN BE SPECIFIED FOR APPLICATION IN RESIDENTIAL, OFFICES, HOTELS, SCHOOLS AND COMMERCIAL BUILDINGS.

AVAILABLE IN SEVEN DIFFERENT FUNCTIONS AND WITH TWO BACKSET (2 ½" AND 2 ¾") THE 2MM.LCK MORTISE LOCKS ARE EQUIPPED WITH A MECHANICAL ANTI-FRICTION LATCH BOLT AND A FULL 1" THROW DEADBOLT WITH TWO HARDENED STEEL ROLLERS FOR MAXIMUM SECURITY.

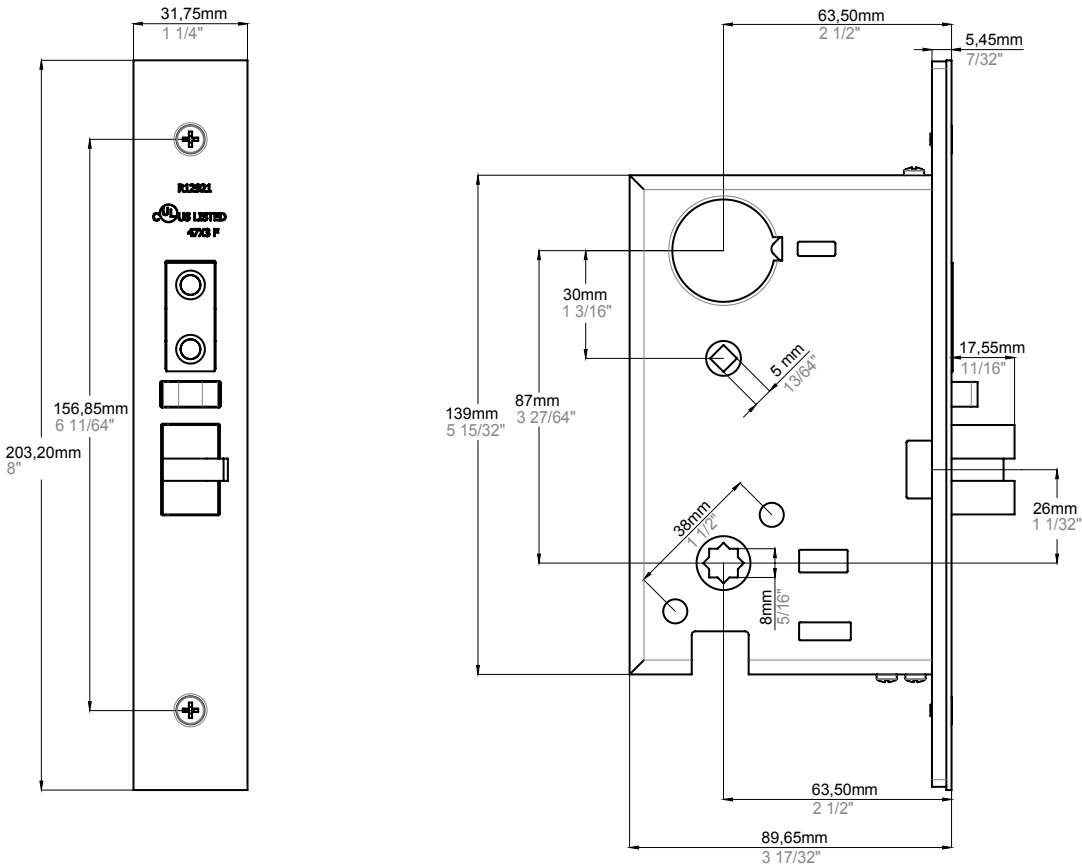
THE EXPOSED PARTS (DEADBOLT, LATCH BOLT, AUXILIARY LATCH AND BUTTONS) ARE IN FORGED BRASS AND FINISHED TO MATCH THE APPEARANCE OF THE STAINLESS STEEL FACEPLATE.

THE FIELD-REVERSIBLE DESIGN ALLOWS TO SWITCH HANDING ON SITE, WITHOUT OPENING THE LOCK CASE. 2MM.LCK MORTISE LOCKS FEATURE AN INDEPENDENT LEVER ROTATION.

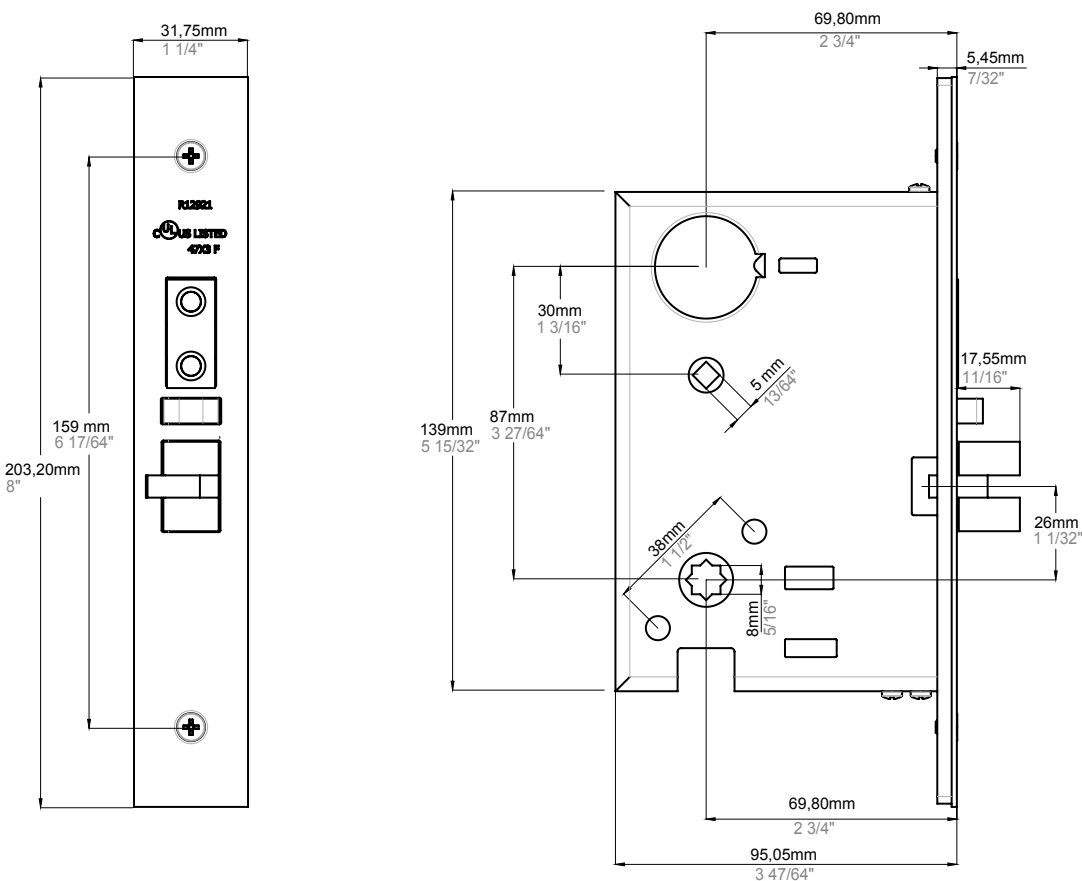


TECH SPECS

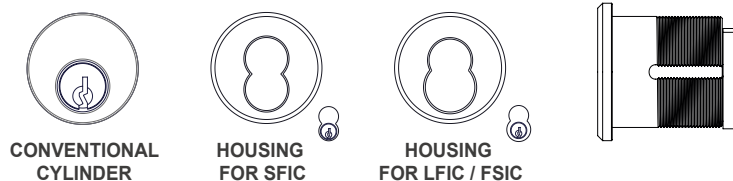
BACKSET 2 1/2



BACKSET 2 3/4



AVAILABLE FORMATS:



PBA MORTISE LOCKS CAN WORK WITH EVERY BRAND OR MODEL OF MORTISE CYLINDERS WITH THE FOLLOWING CAMS INSTALLED:



MORTISE CONVENTIONAL CYLINDER

CIL.MOR.0001.00
MORTISE CONVENTIONAL CYLINDER BATON L=15/16" WITH YA CAM

OTHER BRANDS AVAILABLE ON REQUEST:
ARROW - CORBIN RUSSWIN - KABA - ILCO - MEDECO - SCHLAGE - SARGENT - YALE



MORTISE HOUSING FOR IC

AVAILABLE ON REQUEST MORTISE HOUSINGS FOR SFIC - LFIC / FSIC OF THE FOLLOWING BRANDS:
ARROW - CORBIN RUSSWIN - KABA - ILCO - MEDECO - SCHLAGE - SARGENT - YALE



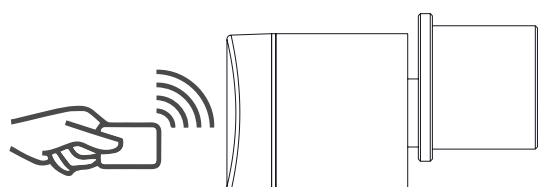
CORE FOR SFIC HOUSING AND LFIC / FSIC HOUSING

AVAILABLE ON REQUEST SFIC - LFIC / FSIC CORES OF THE FOLLOWING BRANDS:
ARROW - CORBIN RUSSWIN - KABA - ILCO - MEDECO - SCHLAGE - SARGENT - YALE

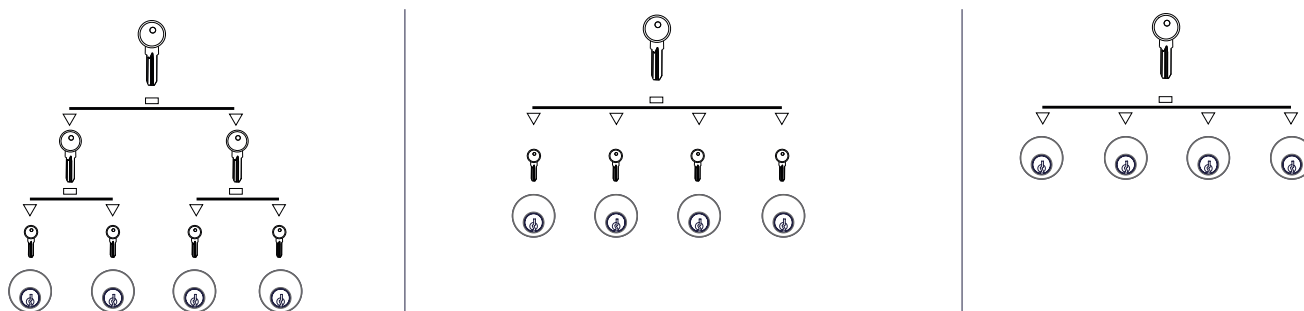


DIGITAL MORTISE CYLINDER WITH CARD AVAILABLE ON REQUEST

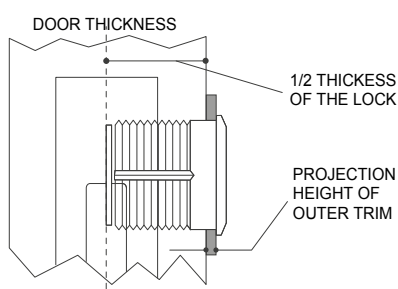
SUGGESTED BRAND:
Salto Neo
Salto Geo



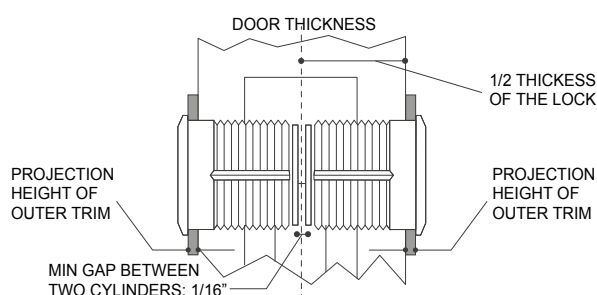
SPECIAL APPLICATION WITH KEY SYSTEM ON REQUEST



SINGLE CYLINDER INSTALLATION



DOUBLE CYLINDERS INSTALLATION



COMPATIBLE
LEVERS



Programma 2000
Stainless Steel
2MM.030.0UT8.xx
2MM.030.00T4.xx

HEAVY-USE



Programma 2000
Stainless Steel
2MM.30S.0UT8.xx
2MM.30S.00T4.xx

SATIN+BRIGHT



Programma 2000
Stainless Steel
2MM.030.0UT8.45
2MM.030.00T4.45



Programma YOD
Stainless Steel - Wood
YOD.003.0UT8.xx
YOD.003.00T4.xx



Programma YOD
Stainless Steel Powder-coated - Wood
2MH.030.UWT8.31



Programma YOD
Stainless Steel Powder-coated - Wood
2MH.030.UWT8.40



Programma YOD
Stainless Steel - Leather
YOD.030.0UT8.xx
YOD.030.00T4.xx



Programma YOD
Stainless Steel Powder-coated - Leather
2MH.030.ULT8.31



Programma YOD
Stainless Steel Powder-coated - Leather
2MH.030.ULT8.40



Programma ALUMINUM
Aluminum
2AM.030.0UT8.xx
2AM.030.00T4.xx



Programma ALUMINUM
Aluminum - Leather
2AM.030.ULT8.68



Programma ALUMINUM
Aluminum
2AM.001.0UT8.xx
2AM.001.00T4.xx



Programma 2000
Stainless Steel
2MM.30B.0UT8.xx
2MM.30B.00T4.xx



Programma CU
Satin Stainless Steel - Copper
2MU.030.0UT8.xx
2MU.030.00T4.xx



Programma 2000
Stainless Steel
2MM.028.0UT8.xx
2MM.028.00T4.xx



Programma YOD
Stainless Steel - Leather
YOD.028.0UT8.xx
YOD.028.00T4.xx



Programma YOD
Stainless Steel Powder-coated - Leather
YOD.028.0UT8.xx
YOD.028.00T4.xx



Programma YOD
Stainless Steel Powder-coated - Leather
YOD.028.0UT8.xx
YOD.028.00T4.xx



Programma CU
Satin Stainless Steel - Copper
2MU.028.0UT8.xx
2MU.028.00T4.xx



Programma 2000
Stainless Steel
2MM.28B.0UT8.xx
2MM.28B.00T4.xx



Programma 300
Polyamide 6
3CC.326.0000.xx



Programma 2000
Stainless Steel
2MM.173.0UT8.xx
2MM.173.00T4.xx



Programma ALUMINUM
Aluminum
2AM.173.0UT8.xx
2AM.173.00T4.xx



Programma ALUMINUM
Aluminum - Leather
2AM.173.ULT8.68



Programma 2000
Stainless Steel
2MM.026.0UT8.xx
2MM.026.00T4.xx



Programma 2000
Stainless Steel
2MM.027.0UT8.xx
2MM.027.00T4.xx



Programma IT
Stainless Steel
0IT.151.0UT8.xx
0IT.151.00T4.xx



Programma IT
Stainless Steel
0IT.152.0UT8.xx
0IT.152.00T4.xx



Programma IT
Stainless Steel
0IT.153.0UT8.xx
0IT.153.00T4.xx



Programma 2000
Stainless Steel
2MM.020.0UT8.xx
2MM.020.00T4.xx



Programma 2000
Stainless Steel
2MM.20S.0UT8.xx
2MM.20S.00T4.xx



Programma 2000
Stainless Steel
2MM.015.0UT8.xx
2MM.015.00T4.xx



Programma 2000
Stainless Steel
2MM.022.0UT8.xx
2MM.022.00T4.xx



Programma 2000
Stainless Steel
2MM.175.0UT8.xx
2MM.175.00T4.xx



Programma 2000
Stainless Steel
2MM.174.0UT8.xx
2MM.174.00T4.xx



Programma YOD
Stainless Steel - Wood
YOD.001.0UT8.xx
YOD.001.00T4.xx



Programma STEELALU
Stainless Steel - Aluminum
STA.001.0UT8.xx



Programma STEELALU
Stainless Steel - Aluminum
STA.002.0UT8.xx



Programma STEELALU
Stainless Steel - Aluminum
STA.003.0UT8.xx



Programma YOD
Stainless Steel - Wood
YOD.002.0UT8.xx
YOD.002.00T4.xx



Programma STEELALU
Stainless Steel - Aluminum
STA.004.0UT8.xx



Programma STEELALU
Stainless Steel - Aluminum
STA.005.0UT8.xx



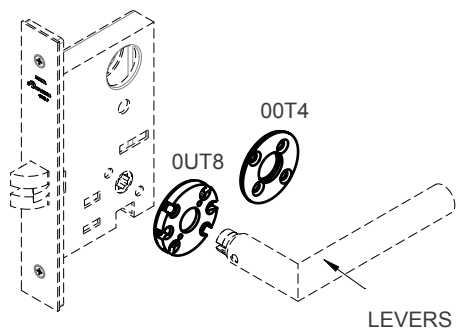
Programma STEELALU
Stainless Steel - Aluminum
STA.006.0UT8.xx

COMPATIBILITY WITH LOCKS

2MM.LCK - US MORTISE LOCK

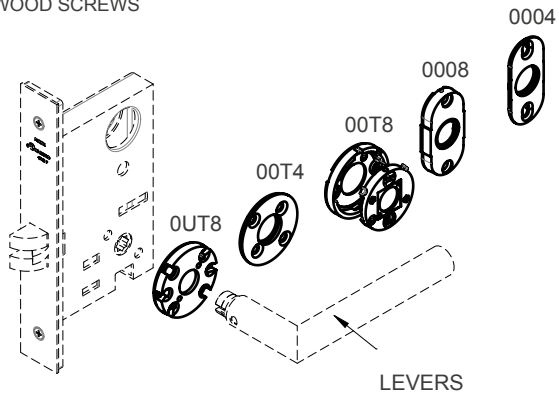
BTB FIXING

METRIC SCREWS + BUSHING



SINGLE FIXING

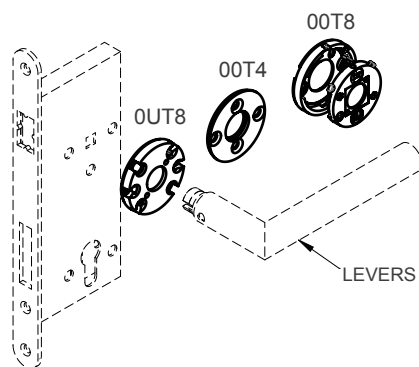
WOOD SCREWS



EUROPEAN MORTISE LOCK *

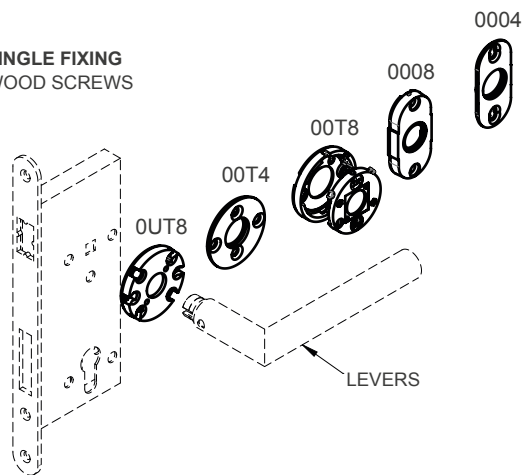
BTB FIXING

METRIC SCREWS + BUSHING



SINGLE FIXING

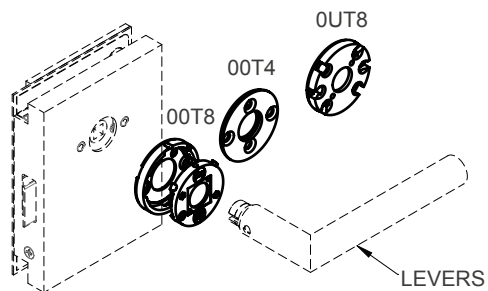
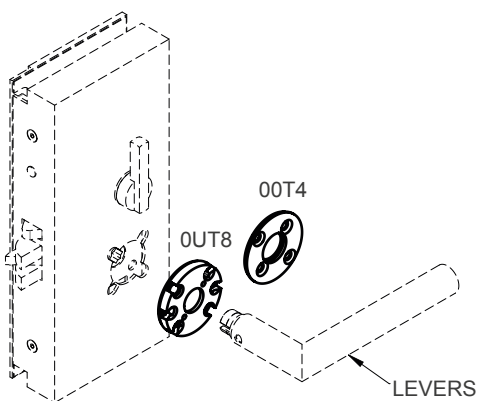
WOOD SCREWS



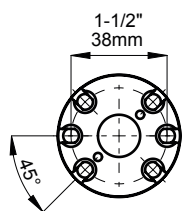
* horizontal fixing holes

BTB FIXING

METRIC SCREWS + BUSHING

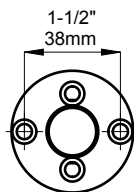
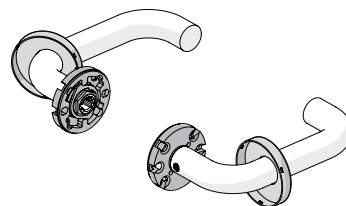


AVAILABLE TRIMS



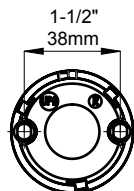
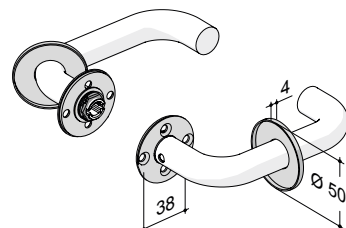
OUT8 - ROUND ROSE 8 MM THICK WITH RETURN SPRING

SUITABLE FOR :
SINGLE SIDE FIXING (SELF TAPPING SCREWS FOR WOOD DOOR)
BACK TO BACK FIXING FOR LOCKSET WITH 38 mm (1-1/2")
CTC HORIZONTAL HOLES OR 45° INCLINED HOLES



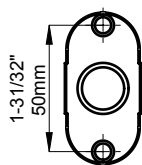
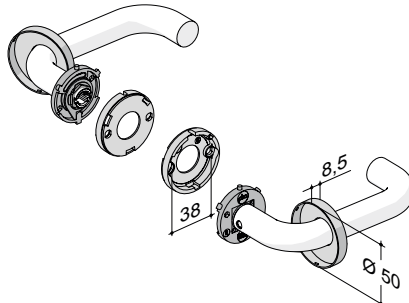
00T4 - ROUND ROSE 4 MM THICK WITHOUT RETURN SPRING (IT ROTATES FREELY)

SUITABLE FOR :
SINGLE SIDE FIXING (SELF TAPPING SCREWS FOR WOOD DOOR)
BACK TO BACK FIXING FOR LOCKSET WITH 38 mm (1-1/2")
CTC HOLES (NO MATTER IF HORIZONTAL OR INCLINED)



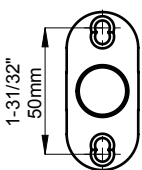
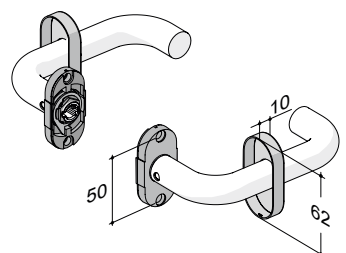
00T8 - ROUND ROSE 8 MM THICK WITH BLOK AND ROLL SYSTEM AND RETURN SPRING

SUITABLE FOR :
SINGLE SIDE FIXING (SELF TAPPING SCREWS FOR WOOD DOOR)
BACK TO BACK FIXING FOR LOCKSET WITH 38 mm (1-1/2")
CTC HORIZONTAL HOLES



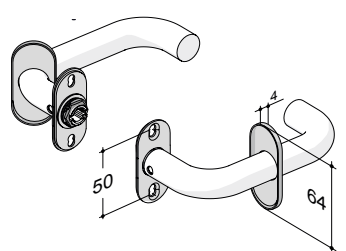
0008 - OVAL ROSE 8 MM THICK WITH RETURN SPRING

SUITABLE FOR :
SINGLE SIDE FIXING (SELF TAPPING SCREWS FOR WOOD DOOR)
BACK TO BACK FIXING FOR LOCKSET WITH 50 mm (1-31/32")
CTC VERTICAL HOLES

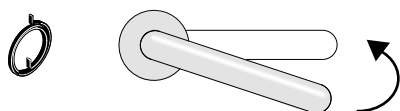


0004 - OVAL ROSE 4 MM THICK WITHOUT RETURN SPRING (IT ROTATES FREELY)

SUITABLE FOR :
SINGLE SIDE FIXING (SELF TAPPING SCREWS FOR WOOD DOOR)
BACK TO BACK FIXING FOR LOCKSET WITH 50 mm (1-31/32")
CTC VERTICAL HOLES



HANDLE FOR MORTISE WITH RETURN SPRING



RETURN SPRING

The return spring brings back the lever handle in horizontal position after use

MOLLA DI RITORNO

La molla di ritorno riporta la leva in posizione orizzontale dopo l'utilizzo

FIXING OPTIONS

SINGLE SIDE FIXING



BACK TO BACK FIXING



SPINDLE OPTIONS

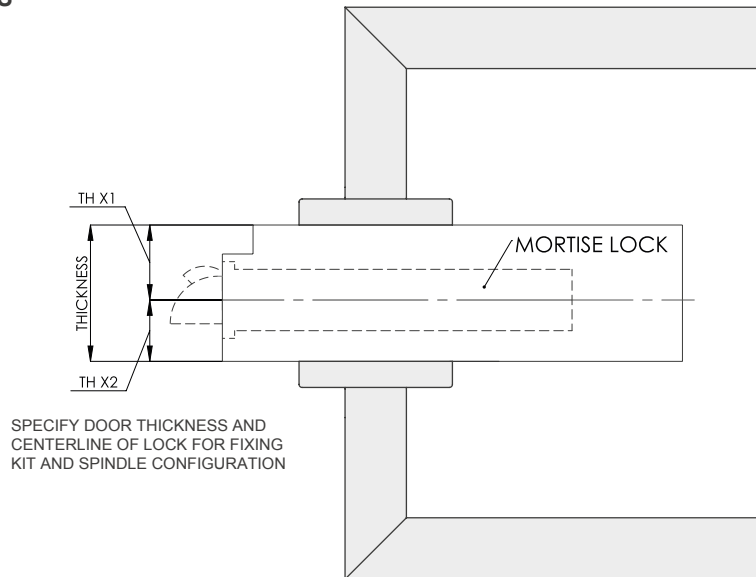
SWIVEL SPINDLE



SOLID SPINDLE



MORTISE LOCKS



TITLE 24 COMPLIANT LEVERSET - CALIFORNIA FIRE CODE SECTION 12-10-202

Levers. The lever of lever-actuated levers or locks shall be curved with a return to within 1/2" of the face of the door to prevent catching on the clothing of persons during egress.

TITLE 24 COMPLIANCE FOR PBA PRODUCTS

SOLID DOORS (WOOD or METAL):

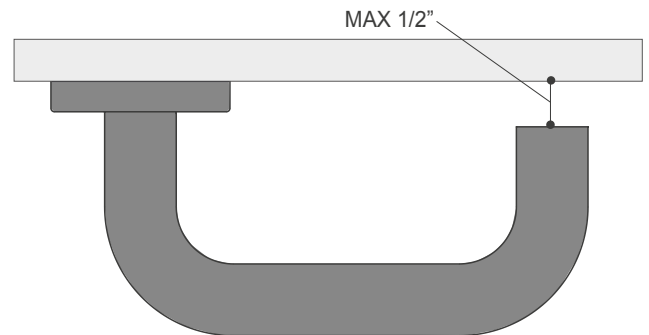
2MM.28B.00T4.xx
2MM.30B.00T4.xx
2MM.28B.0UT8.xx
2MM.30B.0UT8.xx

FRAMELESS GLASS DOOR WITH HGU LOCK :

2MM.28U.HGT4.xx
2MM.30B.HGT4.xx
2MM.28U.HGT8.xx.1(.2)
2MM.30U.HGT8.xx.1(.2)

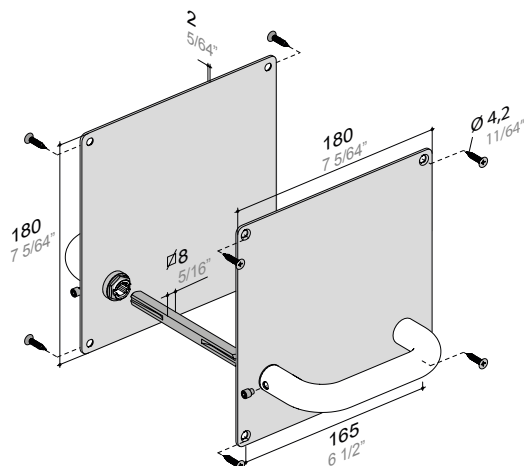
FRAMELESS GLASS DOOR WITH HGL LOCK :

2MM.28B.HGT8.xx.1(.2)
2MM.30B.HGT8.xx.1(.2)



*SOLID DOOR TYPICAL INSTALLATION SHOWN

HANDLE ON PLATE WITHOUT RETURN SPRING FOR MORTISE LOCKS



PLATES

Plates: rectangular-square with or without ball-bearings in stainless steel AISI 316L, thickness 2 mm. The ball-bearings is connected to the plate.