

## TECHNICAL INFORMATION

# SINGLE-MOTION UNLOCKING DOOR PULL

FOR SWING AND SLIDING DOORS

PATENT

no. 11,519,199

SINGLE  
MOTION

UNLOCK AND OPEN DOOR  
WITH A SINGLE MOVEMENT  
USING THE ACTIVATION BAR

A D A

< 5 lbf

WITH THE DOOR LATCHED,  
THE ACTIVATION BAR IS  
OPERATED BY A FORCE  
LOWER THAN 5 LBF (22N)  
UNTIL THE LOCKING BOLT IS  
COMPLETELY RETRACTED (ADA  
309.4 – OPERABLE PARTS AND  
ANSI/BHMA A 156.3 REF. 8.2.1)



## ACTIVATION BAR



PULL  
ALUMINUM

BLACK  
ANODIZED



ACTIVATION BAR  
ALUMINUM



SILVER  
ANODIZED



PULL  
ALUMINUM

BRONZE  
ANODIZED



ACTIVATION BAR  
ALUMINUM



BLACK  
ANODIZED



PULL  
ALUMINUM

SILVER  
ANODIZED



ACTIVATION BAR  
ALUMINUM



BLACK  
ANODIZED

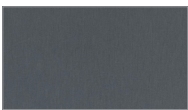
With the door latched, the activation bar is operated by a force lower than 5 lbf (22N) until the locking bolt is completely retracted (ADA 309.4 – OPERABLE PARTS and ANSI/BHMA A 156.3 ref. 8.2.1).

Black Activation Bar - Polyamide-6 Black Caps

Silver Activation Bar - Polyamide-6 Grey Caps

"Special Color" Activation Bar - Client's choice of Polyamide-6 Black or Polyamide-6 Grey Caps

## ACTIVATION BAR: SPECIAL ALUMINUM ANODIZED COLORS



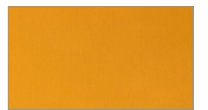
GREY



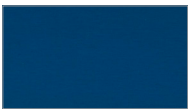
LIGHT BLUE



RED



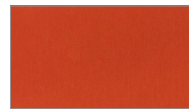
YELLOW



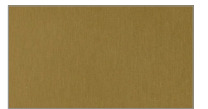
BLUE



GREEN



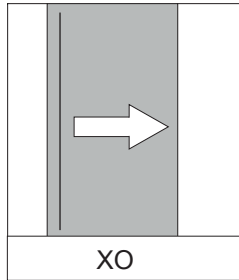
ORANGE



GOLD

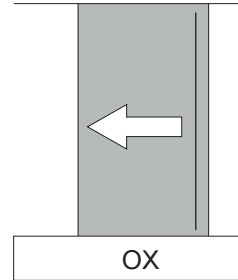
## SLIDING DOOR HANDING

"HANDEDNESS" OF A SLIDING DOOR IS EXPRESSED AS SEEN BY AN OBSERVER OUTSIDE THE BUILDING. A LEFT-HANDED DOOR OPENS ON THE LEFT SIDE, AND A RIGHT-HANDED DOOR OPENS ON THE RIGHT. THESE RELATIONSHIPS ARE SOMETIMES DESCRIBED WITH THE LETTERS **O** AND **X**, WHERE **O** IS THE FIXED PANEL AND **X** IS THE SLIDING PANEL.



**LEFT HANDED**

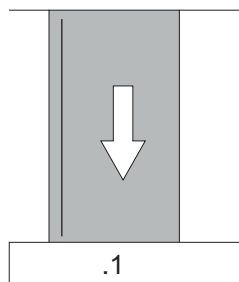
LEFT PANEL SLIDES RIGHT



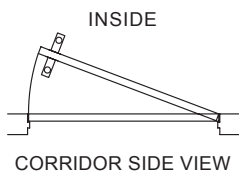
**RIGHT HANDED**

RIGHT PANEL SLIDES LEFT

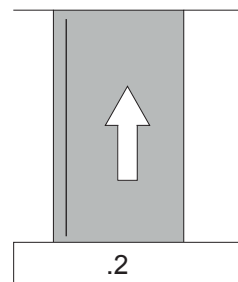
## SWING DOOR



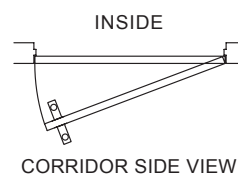
**SWING - PULL**



PULL TO EXIT (room side)  
PUSH TO ENTER (corridor side)

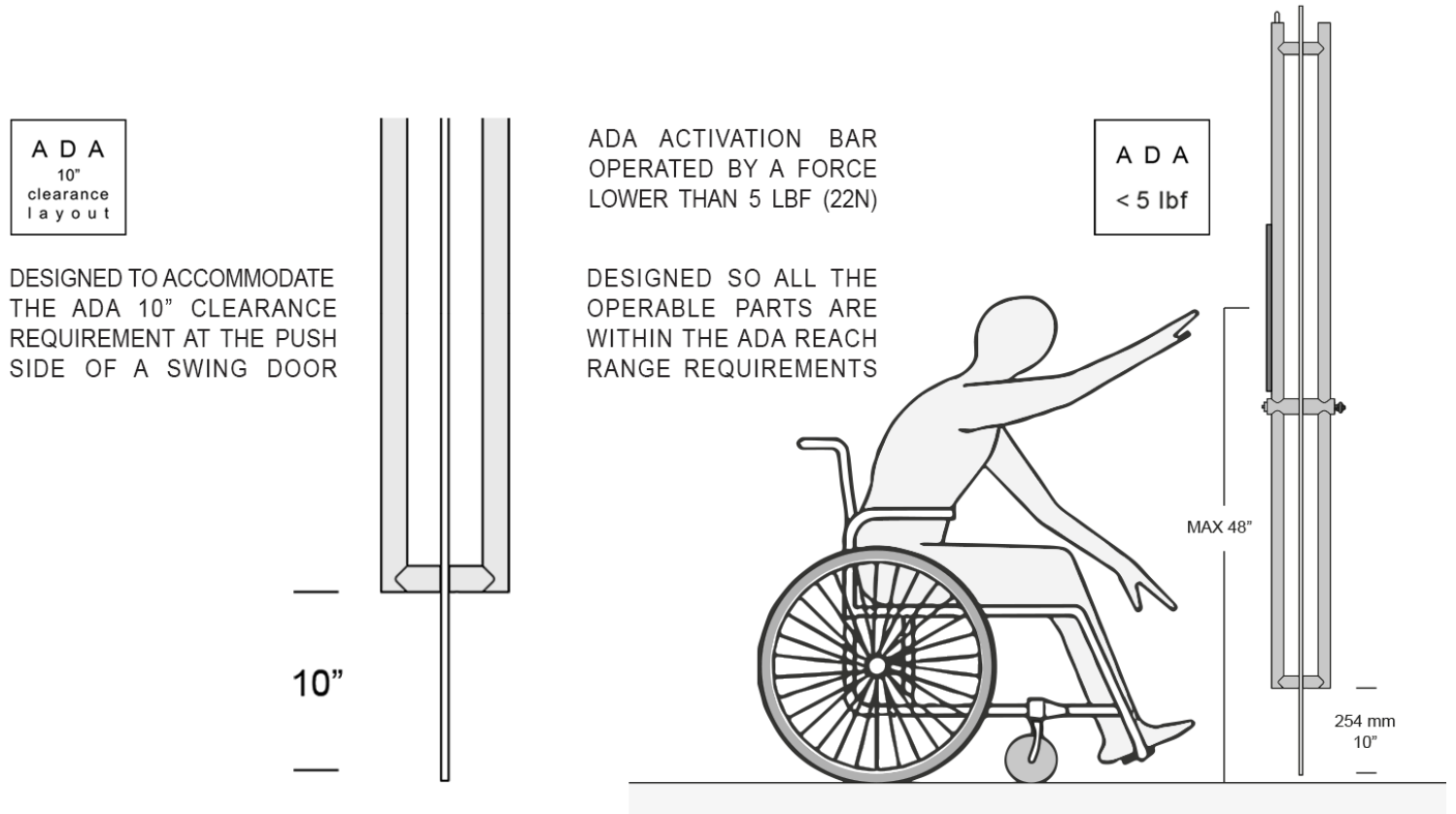


**SWING - PUSH**

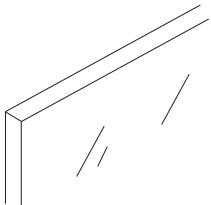


PUSH TO EXIT (room side)  
PULL TO ENTER (corridor side)

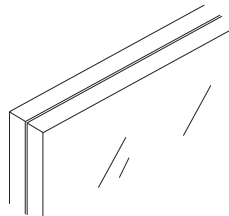
CONFIGURATION TO COMPLY WITH ADA STANDARD



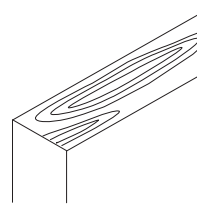
INSTALLATION ON ANY TYPE OF MATERIAL



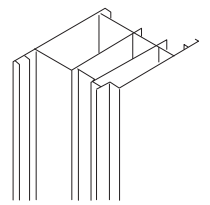
GLASS DOORS



DOUBLE GLAZED DOORS



WOOD DOORS



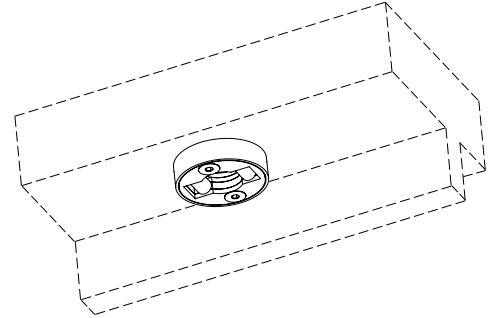
METAL DOORS

### MANDATORY STRIKE PLATE WITH ROLLER (INCLUDED)

TO ENSURE PROPER OPERATION, THE SINGLE MOTION UNLOCKING DOOR PULL SHOULD BE USED WITH THE pba "ROLLER" STRIKE PLATE SHIPPED WITH THE PRODUCT. THE pba STRIKE PLATE SHOULD BE REVIEWED AND APPROVED BY THE DESIGN TEAM FOR USE WITH THE INTENDED DEMOUNTABLE PARTITION SYSTEM. WHEN REQUIRED, CUSTOM STRIKE PLATES ARE AVAILABLE TO ADAPT THE PULL TO VIRTUALLY ANY DEMOUNTABLE PARTITION SYSTEM. CONTACT PBA FOR MORE INFORMATION.

#### STANDARD:

STANDARD STRIKE PLATE IN 316L STAINLESS STEEL WITH ROLLER INCLUDED



#### KLO.SKI.0001.44:

STANDARD STRIKE PLATE WITH ROLLERS FOR SILVER ANODIZED ALUMINUM SINGLE MOTION UNLOCKING DOOR PULL

#### KLO.SKI.0001.40:

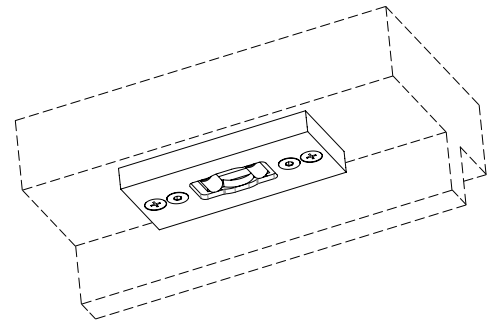
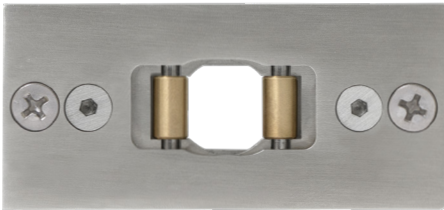
STANDARD STRIKE PLATE WITH ROLLERS FOR BLACK ANODIZED ALUMINUM SINGLE MOTION UNLOCKING DOOR PULL

#### KLO.SKI.0001.39:

STANDARD STRIKE PLATE WITH ROLLERS FOR BRONZE ANODIZED ALUMINUM SINGLE MOTION UNLOCKING DOOR PULL

#### ON REQUEST:

ADJUSTABLE TOP STRIKE PLATE IN 316L STAINLESS STEEL WITH ROLLERS

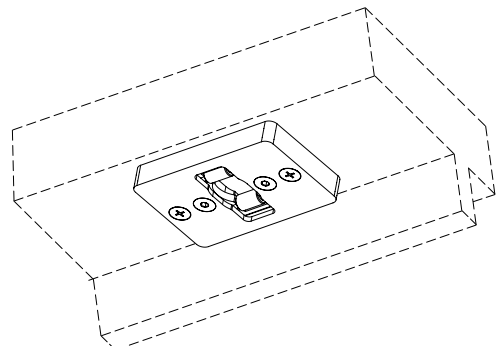
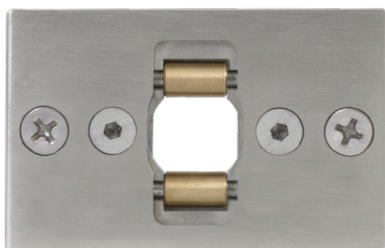


#### KLO.SKI.0002.44:

ADJUSTABLE STRIKE PLATE WITH ROLLERS FOR SLIDING DOORS

#### ON REQUEST:

ADJUSTABLE TOP STRIKE PLATE IN 316L STAINLESS STEEL WITH ROLLERS

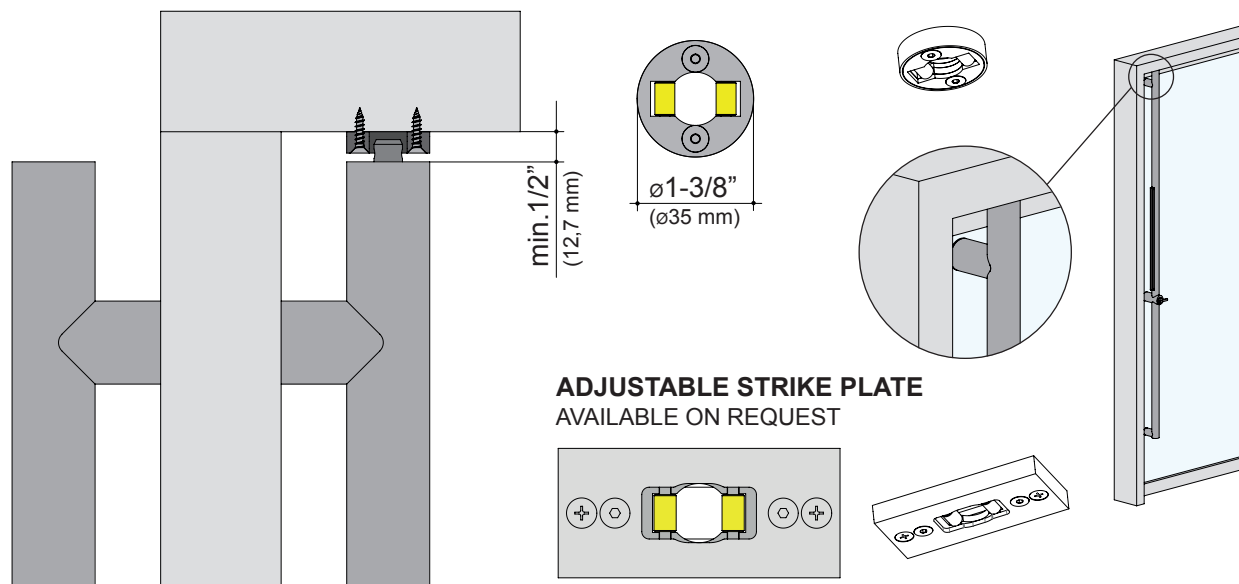


#### KLO.SKI.0005.44:

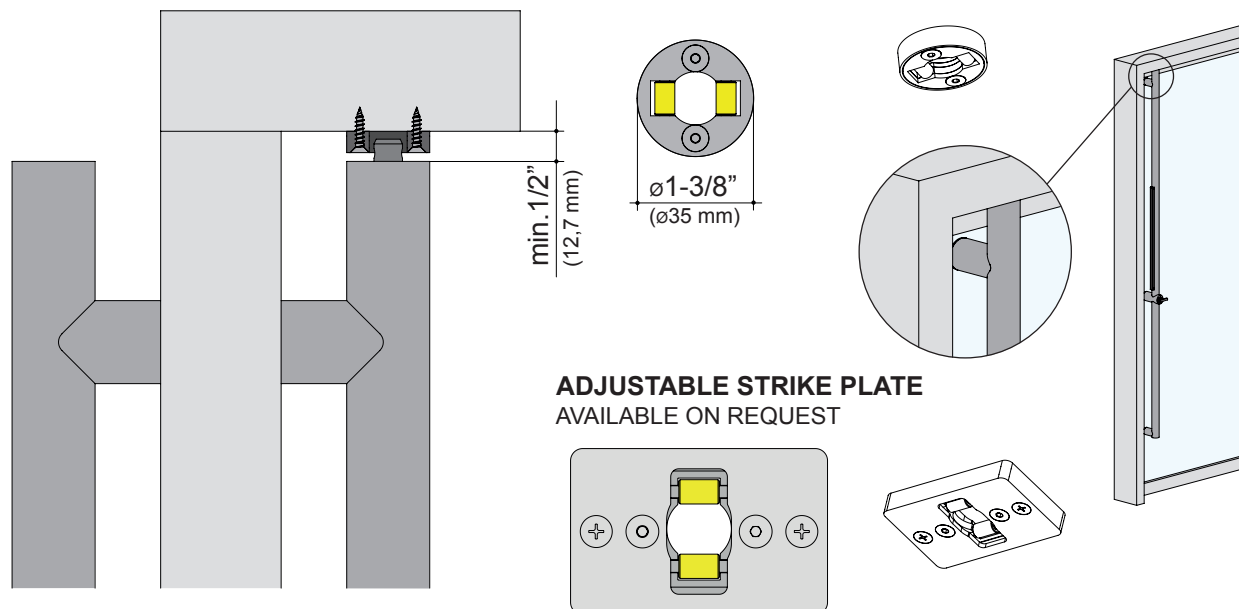
ADJUSTABLE STRIKE PLATE WITH ROLLERS FOR SWING DOORS

## STRIKE PLATE OPTIONS FOR TOP LOCKING PULLS

### STANDARD STRIKE PLATE IN 316L STAINLESS STEEL FOR SLIDING DOORS INCLUDED



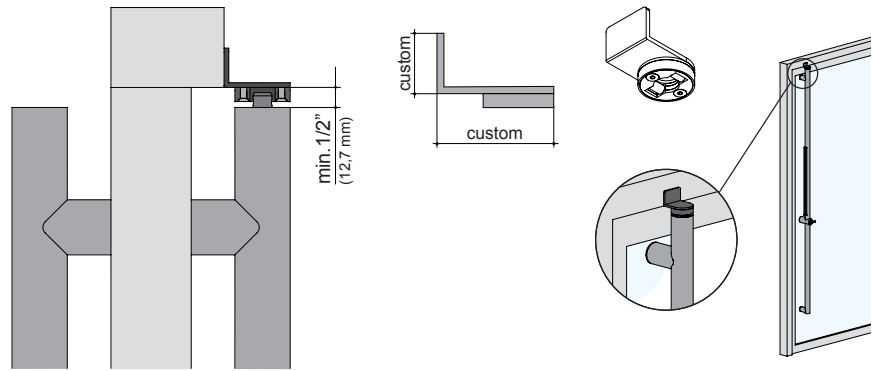
### STANDARD STRIKE PLATE IN 316L STAINLESS STEEL FOR SWING DOORS INCLUDED



## STRIKE PLATE OPTIONS FOR TOP LOCKING PULLS

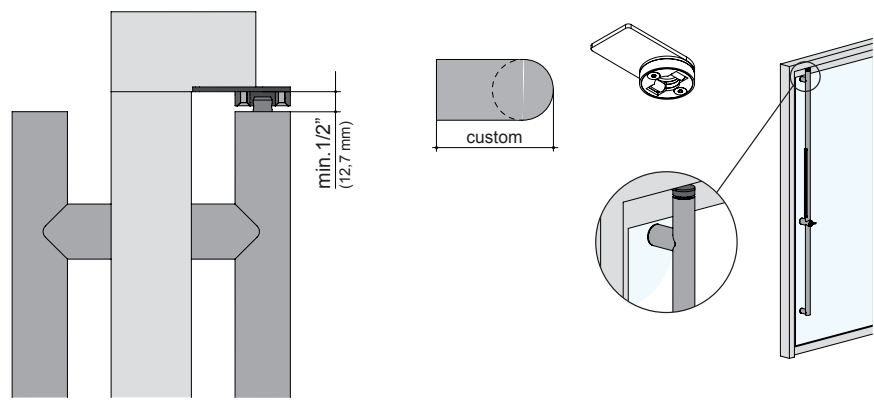
**CUSTOM "L" STRIKE PLATE  
IN 316L STAINLESS STEEL**  
ON REQUEST

**KLO.SKI.9993**



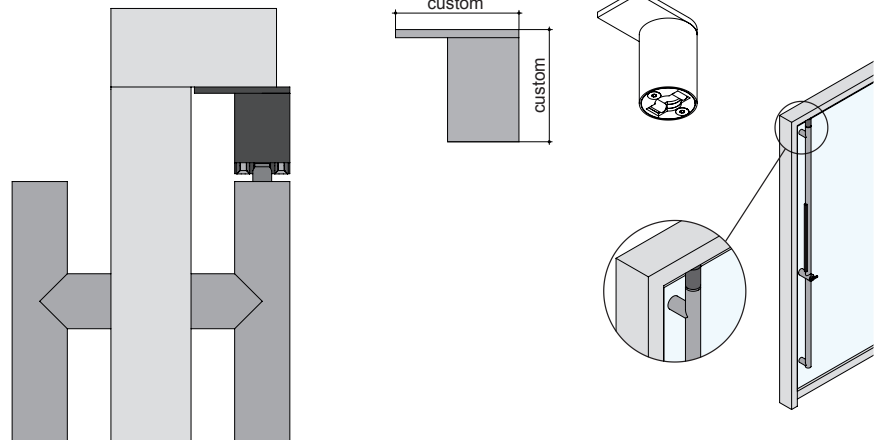
**CUSTOM STRAIGHT STRIKE PLATE  
IN 316L STAINLESS STEEL**  
ON REQUEST

**KLO.SKI.9994**



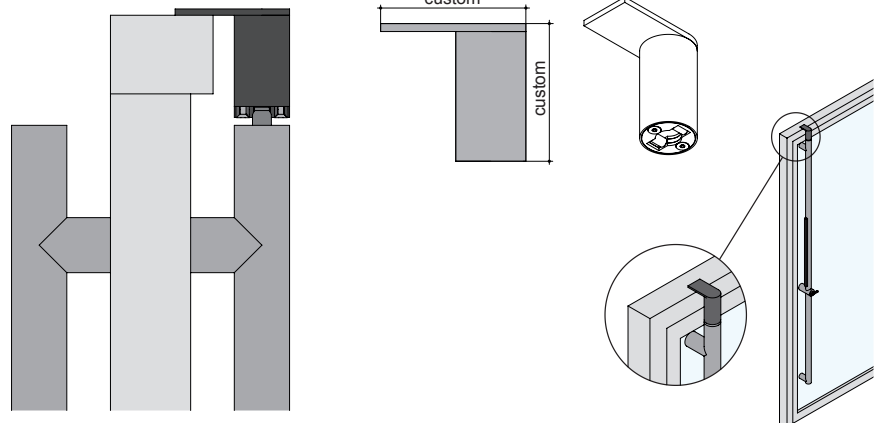
**CUSTOM STRAIGHT TUBULAR STRIKE PLATE  
IN 316L STAINLESS STEEL**  
ON REQUEST

Frame Installation



**CUSTOM STRAIGHT TUBULAR STRIKE PLATE  
IN 316L STAINLESS STEEL**  
ON REQUEST

Ceiling Installation



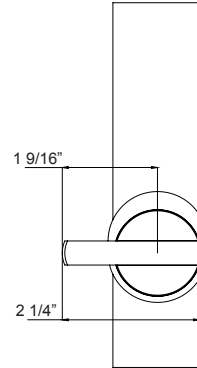


ADA COMPLIANT THUMBTURN

**STANDARD:**  
ADA 1-9/16" COMPLIANT THUMBTURN



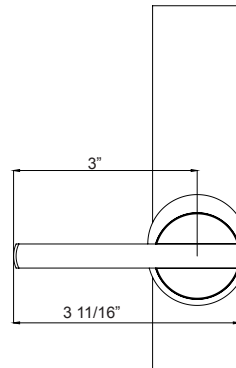
**STANDARD**  
ALUMINUM



**ON REQUEST:**  
ADA 3" COMPLIANT THUMBTURN

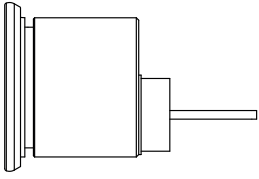


**ON REQUEST**  
ALUMINUM

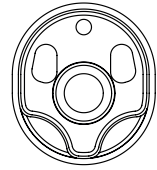


## CYLINDER OPTIONS

### RIM CYLINDERS - FOR ALUMINUM LOCKING LADDER PULLS



PBA UNIVERSAL BACKPLATE INCLUDED WITH LOCKING PULL  
ALLOWS TO ACCOMMODATE ANY RIM CYLINDER BRAND OR FORMAT



#### AVAILABLE FORMATS:



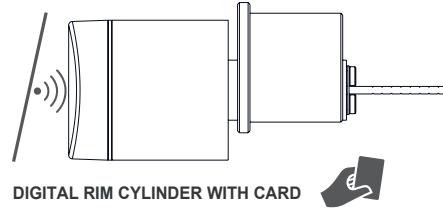
CONVENTIONAL



HOUSING FOR SFIC



HOUSING FOR LFIC

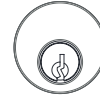


DIGITAL RIM CYLINDER WITH CARD

#### CONVENTIONAL RIM CYLINDER

**CIL.RIM.0001.00**  
ILCO RIM CYLINDER

OTHER BRANDS AVAILABLE ON REQUEST:  
ARROW - CORBIN RUSSWIN - KABA - MEDECO - SCHLAGE - SARGENT - YALE



#### HOUSING FOR SFIC

**CIL.HOU.RS01.00**  
SCHLAGE SFIC RIM HOUSING

OTHER BRANDS AVAILABLE ON REQUEST:  
ARROW - CORBIN RUSSWIN - KABA - ILCO - MEDECO - SARGENT - YALE



#### HOUSING FOR LFIC

**CIL.HOU.RL01.00**  
SCHLAGE FSIC RIM HOUSING

OTHER BRANDS AVAILABLE ON REQUEST:  
ARROW - CORBIN RUSSWIN - KABA - ILCO - MEDECO - SARGENT - YALE



#### CORE FOR SFIC HOUSING AND FSIC HOUSING

BRAND OF COMPATIBLE CORE FOR SFIC AND LFIC ON REQUEST:  
ARROW - CORBIN RUSSWIN - KABA - ILCO - MEDECO - SCHLAGE - SARGENT - YALE

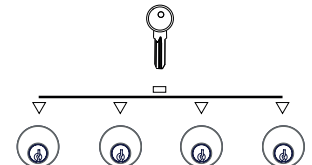
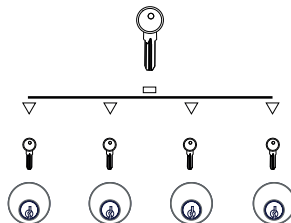
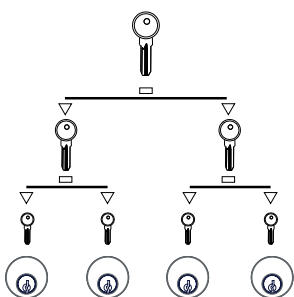


#### DIGITAL RIM CYLINDER WITH CARD

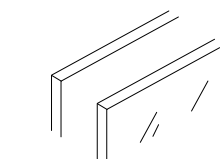
SUGGESTED BRAND:  
SALTO Neo  
SALTO Geo



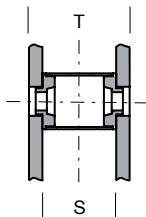
#### SPECIAL APPLICATION WITH KEY SYSTEM ON REQUEST



## SPACERS FOR DOUBLE GLAZED DOOR



Double glazed doors



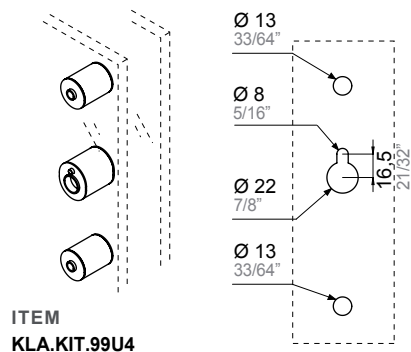
T = custom

S = custom

## OVAL + ROUND SPACERS

### KLA LINE RIM - SPACERS FOR ALUMINIUM Ø37 LOCKING AND NON LOCKING PULLS

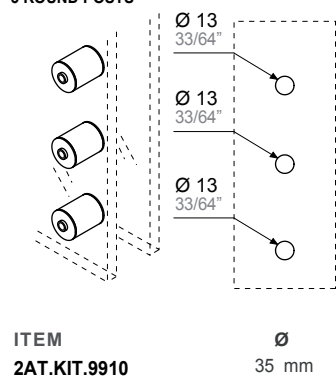
1 OVAL POST (CENTER) + 2 Ø35 ROUND POSTS (TOP/BOTTOM)



## ROUND SPACERS

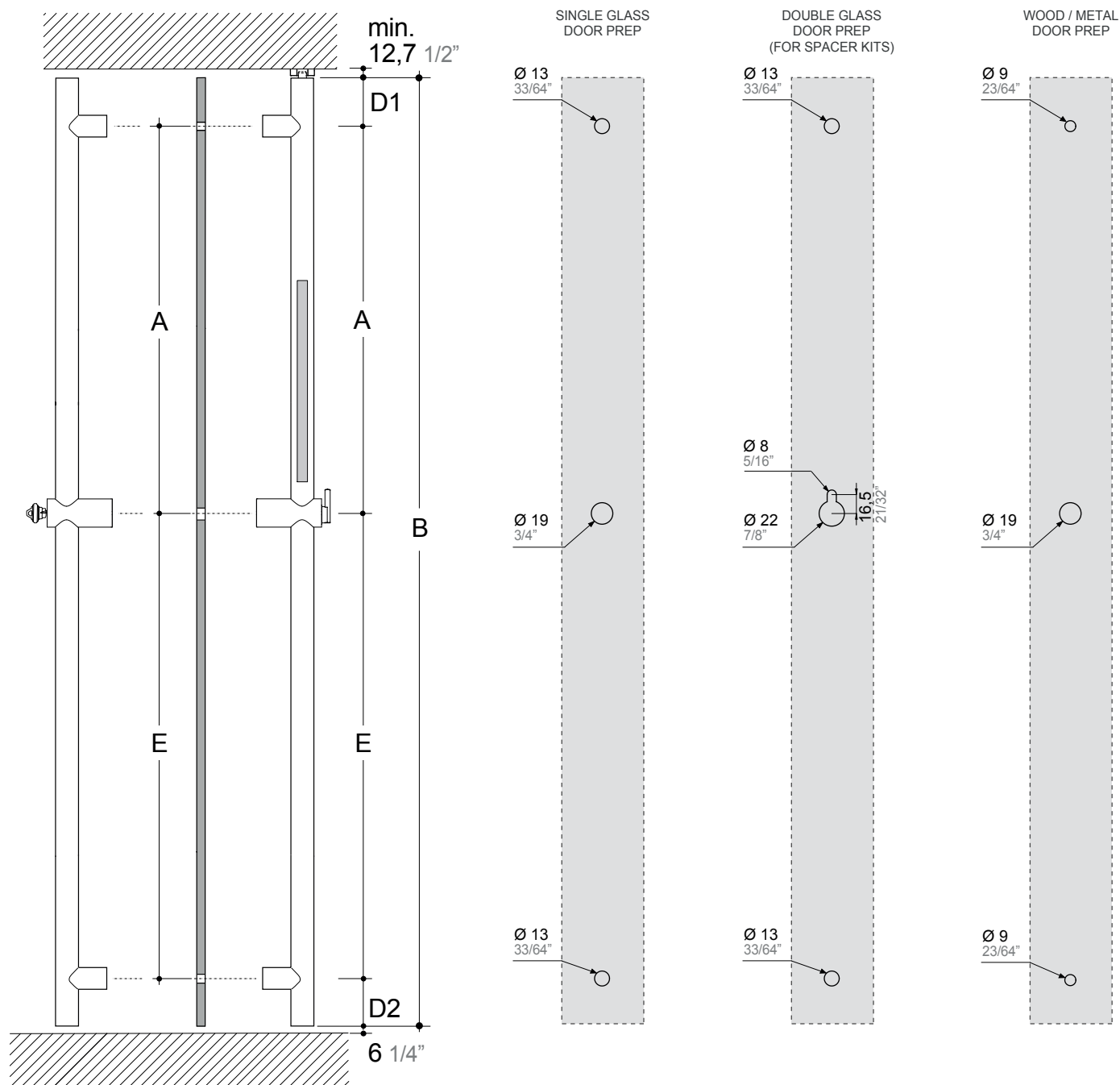
### SPACERS FOR ALUMINIUM NON LOCKING PULLS

3 ROUND POSTS



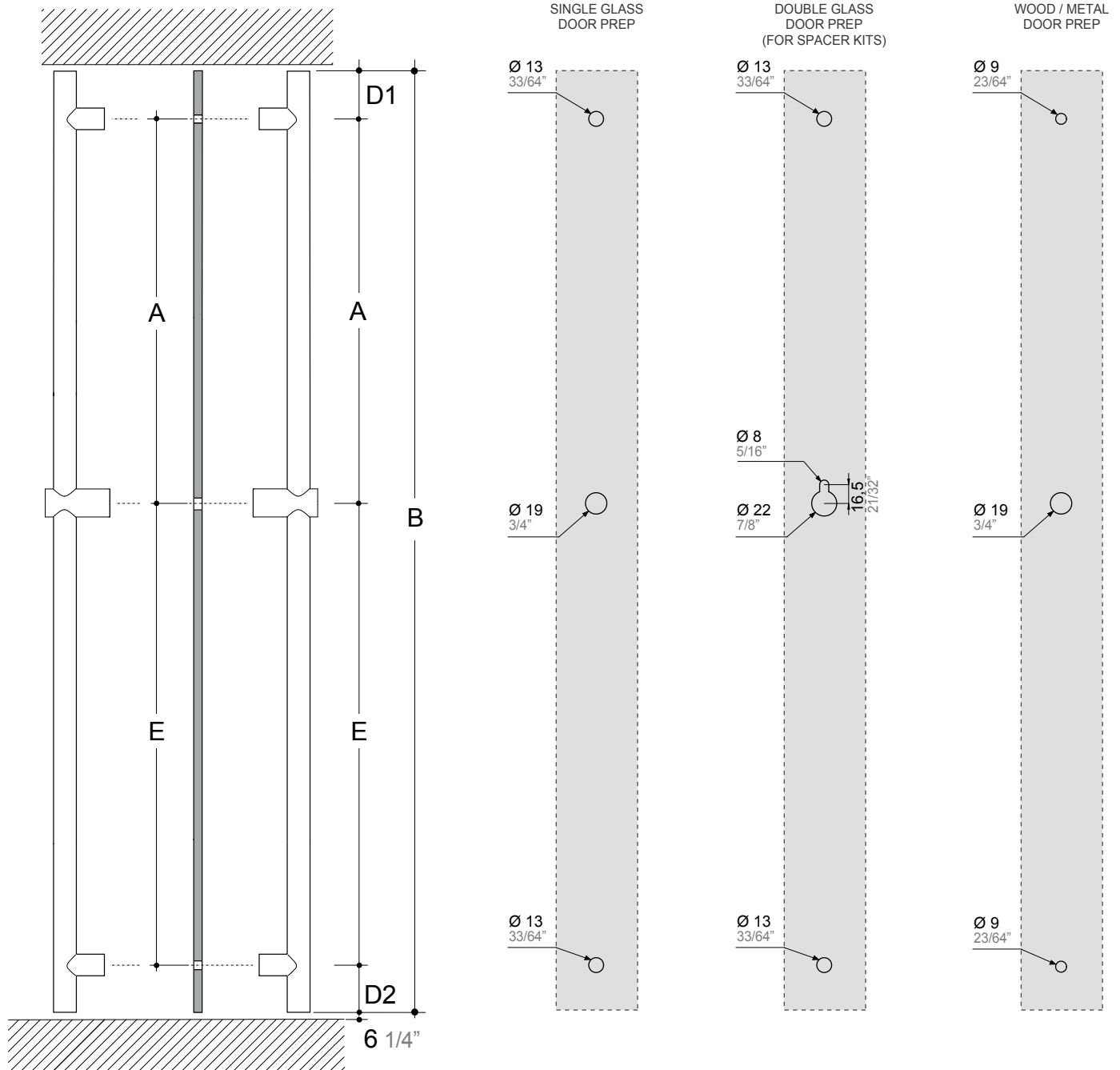
# DP6 - DOOR PREPARATION FOR FULL SIZE SINGLE-MOTION UNLOCKING DOOR PULLS

## HOLES DIAMETERS AND CENTER TO CENTER SIZES



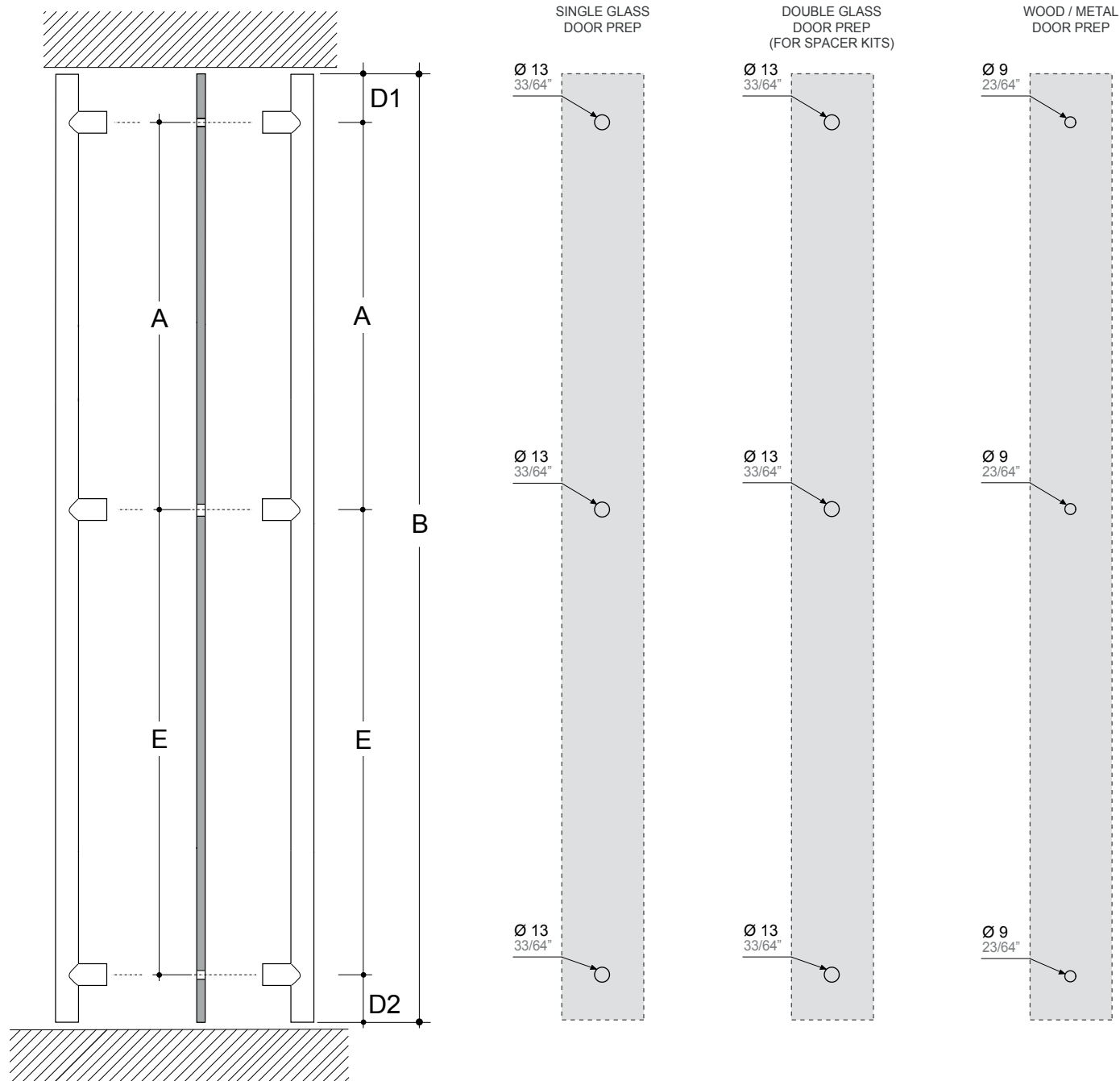
# DP1 - DOOR PREPARATION FOR FULL SIZE LADDER PULLS NON LOCKING

## HOLES DIAMETERS AND CENTER TO CENTER SIZES

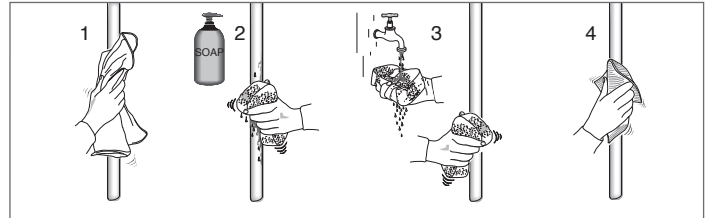
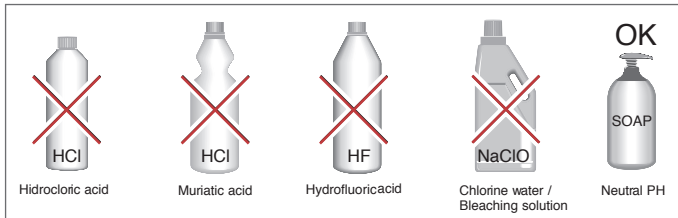


# DP4 - DOOR PREPARATION FOR FULL SIZE LADDER PULLS NON LOCKING (ONLY ROUND POSTS)

## HOLES DIAMETERS AND CENTER TO CENTER SIZES



## MAINTENANCE



## ADA

The Americans with Disabilities Act of 1990 (ADA), including the following amendments, fixes that door and gate hardware shall be operable with one hand and shall not require tight grasping, pinching and twisting of the wrist. Moreover a force of maximum 5 pounds (22,2 N) is required to operate the hardware. All pba ADA products are designed and produced in compliance of the above requirements. Final interpretation of ADA compliance is the responsibility of the specifier and should be determined relative to specific project conditions and local codes.