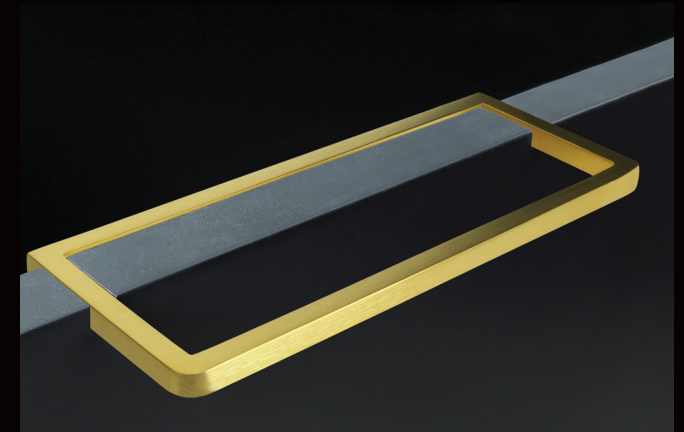
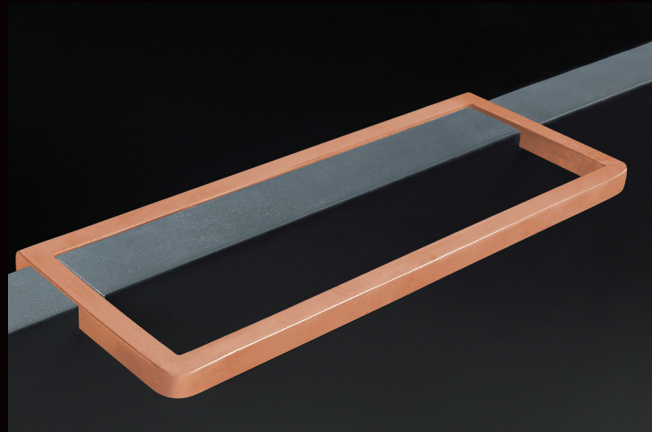
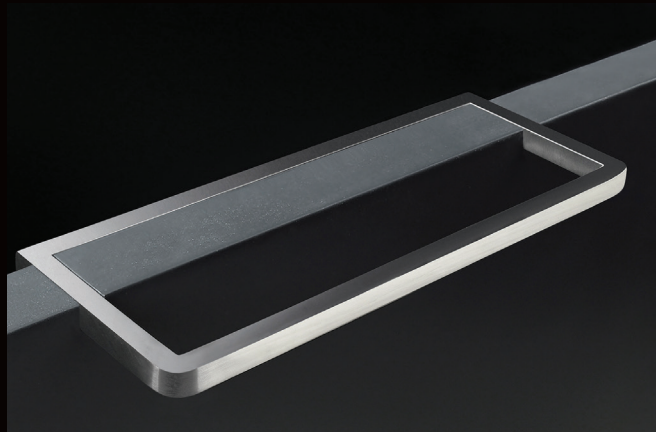




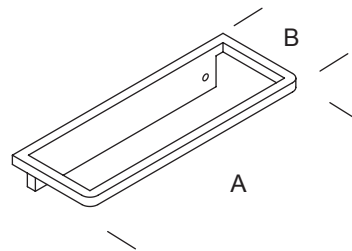
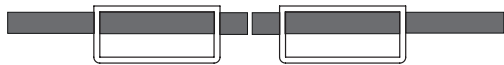
LEED®

# Design 2R

EVERYONE MILLWORK PULLS

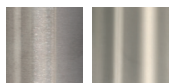


## Design 2R



### FINISHES .XX

#### STAINLESS STEEL



Satin .44  
Bright\* .43

#### STAINLESS STEEL POWDER COATED



White .31  
Champagne .38  
Bronze .39



Grey .32  
Black .40

#### STAINLESS STEEL POWDER COATED AMC



Transparent Satin .99  
Transparent Bright .99  
Black .99  
Bronze .99

#### COPPER PLATED WITHOUT COATING



Semi-Bright .58

Black burnished steel fixing screws  
Copper plated finish can vary significantly from batch to batch

#### STAINLESS STEEL PVD GOLD



Satin .80

Black or white burnished steel fixing screws

ART.	A	B
GMP.D2R.0005. xx	127 mm 5 in	58 mm 2 9/32"
GMP.D2R.0006. xx	152,4 mm 6 in	58 mm 2 9/32"
GMP.D2R.0007. xx	177,8 mm 7 in	58 mm 2 9/32"
GMP.D2R.0008. xx	203,2 mm 8 in	58 mm 2 9/32"
GMP.D2R.0009. xx	228,6 mm 9 in	58 mm 2 9/32"
GMP.D2R.0010. xx	254 mm 10 in	58 mm 2 9/32"
GMP.D2R.0011. xx	279,4 mm 11 in	58 mm 2 9/32"
GMP.D2R.0012. xx	304,8 mm 12 in	58 mm 2 9/32"

\* Stainless Steel Bright finish has a Satin inner profile

Everyone Millwork Pulls shall not be used on appliance doors when the appliance is firmly connected to the door.

Hardwood or medium-density fiberboard (MDF) substrates are recommended when Design 2, Design 2R, Design 3, Design 3R and Design 4 pulls are used. Lesser grade materials, such as particle board, could affect connection strength.