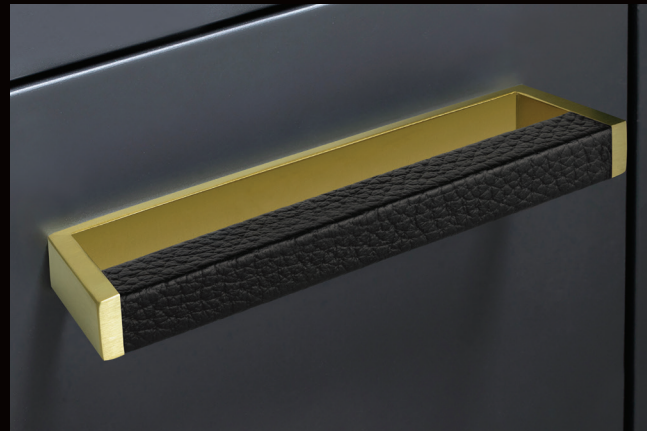




STAINLESS STEEL SATIN AND BLACK LEATHER AS PICTURED

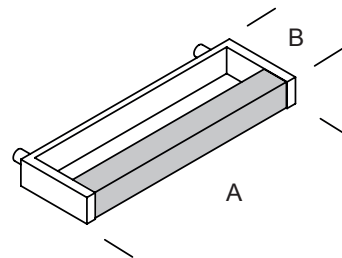
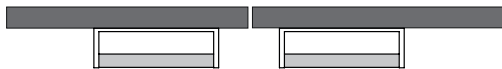


STAINLESS STEEL PVD GOLD SATIN AND BLACK LEATHER AS PICTURED

5-P-00344 EPD*
environdec.com



Design 9



LEATHER



Black



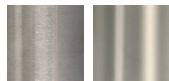
Brown



Colors on request

FINISHES .XX

STAINLESS STEEL



Satin .44
Bright* .43

STAINLESS STEEL POWDER COATED



White .31
Champagne .38
Bronze .39



Grey .32
Black .40

STAINLESS STEEL PVD GOLD



Satin .80

Black or white burnished steel fixing screws

ART.	A	B	ART.	A	B	ART.	A	B
GMPD09.BL05.xx	127 mm	48 mm	GMPD09.BR05.xx	127 mm	48 mm	GMPD09.9L05.xx	127 mm	48 mm
	5 in	1 57/64"		5 in	1 57/64"		5 in	1 57/64"
GMPD09.BL06.xx	152,4 mm	48 mm	GMPD09.BR06.xx	152,4 mm	48 mm	GMPD09.9L06.xx	152,4 mm	48 mm
	6 in	1 57/64"		6 in	1 57/64"		6 in	1 57/64"
GMPD09.BL07.xx	177,8 mm	48 mm	GMPD09.BR07.xx	177,8 mm	48 mm	GMPD09.9L07.xx	177,8 mm	48 mm
	7 in	1 57/64"		7 in	1 57/64"		7 in	1 57/64"
GMPD09.BL08.xx	203,2 mm	48 mm	GMPD09.BR08.xx	203,2 mm	48 mm	GMPD09.9L08.xx	203,2 mm	48 mm
	8 in	1 57/64"		8 in	1 57/64"		8 in	1 57/64"
GMPD09.BL09.xx	228,6 mm	48 mm	GMPD09.BR09.xx	228,6 mm	48 mm	GMPD09.9L09.xx	228,6 mm	48 mm
	9 in	1 57/64"		9 in	1 57/64"		9 in	1 57/64"
GMPD09.BL10.xx	254 mm	48 mm	GMPD09.BR10.xx	254 mm	48 mm	GMPD09.9L10.xx	254 mm	48 mm
	10 in	1 57/64"		10 in	1 57/64"		10 in	1 57/64"
GMPD09.BL11.xx	279,4 mm	48 mm	GMPD09.BR11.xx	279,4 mm	48 mm	GMPD09.9L11.xx	279,4 mm	48 mm
	11 in	1 57/64"		11 in	1 57/64"		11 in	1 57/64"
GMPD09.BL12.xx	304,8 mm	48 mm	GMPD09.BR12.xx	304,8 mm	48 mm	GMPD09.9L12.xx	304,8 mm	48 mm
	12 in	1 57/64"		12 in	1 57/64"		12 in	1 57/64"

* Stainless Steel Bright finish has a Satin inner profile

Everyone Millwork Pulls shall not be used on appliance doors when the appliance is firmly connected to the door.

Genuine leather is a natural material that may exhibit marks, lines, wrinkles, and color variation.