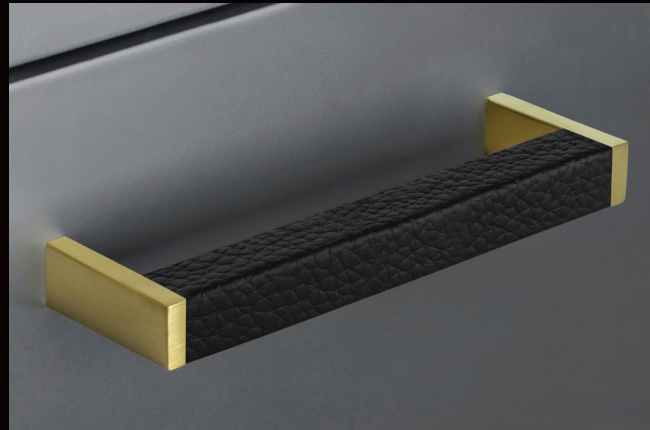


STAINLESS STEEL SATIN AND BLACK LEATHER AS PICTURED

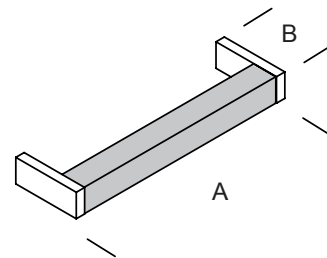
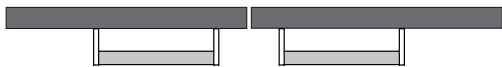


STAINLESS STEEL PVD GOLD SATIN AND BLACK LEATHER AS PICTURED

S-P-00344 EPD\*  
environnement.com



## Design 8



### LEATHER



Black



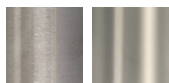
Brown



Colors on request

### FINISHES .XX

#### STAINLESS STEEL



Satin .44  
Bright\* .43

#### STAINLESS STEEL POWDER COATED



White .31  
Champagne .38  
Bronze .39



Grey .32  
Black .40

#### STAINLESS STEEL PVD GOLD



Satin .80

Black or white burnished steel fixing screws

ART.	A	B	ART.	A	B	ART.	A	B
GMPD08.BL05.xx	127 mm	44 mm	GMPD08.BR05.xx	127 mm	44 mm	GMPD08.9L05.xx	127 mm	44 mm
	5 in	1 47/64"		5 in	1 47/64"		5 in	1 47/64"
GMPD08.BL06.xx	152,4 mm	44 mm	GMPD08.BR06.xx	152,4 mm	44 mm	GMPD08.9L06.xx	152,4 mm	44 mm
	6 in	1 47/64"		6 in	1 47/64"		6 in	1 47/64"
GMPD08.BL07.xx	177,8 mm	44 mm	GMPD08.BR07.xx	177,8 mm	44 mm	GMPD08.9L07.xx	177,8 mm	44 mm
	7 in	1 47/64"		7 in	1 47/64"		7 in	1 47/64"
GMPD08.BL08.xx	203,2 mm	44 mm	GMPD08.BR08.xx	203,2 mm	44 mm	GMPD08.9L08.xx	203,2 mm	44 mm
	8 in	1 47/64"		8 in	1 47/64"		8 in	1 47/64"
GMPD08.BL09.xx	228,6 mm	44 mm	GMPD08.BR09.xx	228,6 mm	44 mm	GMPD08.9L09.xx	228,6 mm	44 mm
	9 in	1 47/64"		9 in	1 47/64"		9 in	1 47/64"
GMPD08.BL10.xx	254 mm	44 mm	GMPD08.BR10.xx	254 mm	44 mm	GMPD08.9L10.xx	254 mm	44 mm
	10 in	1 47/64"		10 in	1 47/64"		10 in	1 47/64"
GMPD08.BL11.xx	279,4 mm	44 mm	GMPD08.BR11.xx	279,4 mm	44 mm	GMPD08.9L11.xx	279,4 mm	44 mm
	11 in	1 47/64"		11 in	1 47/64"		11 in	1 47/64"
GMPD08.BL12.xx	304,8 mm	44 mm	GMPD08.BR12.xx	304,8 mm	44 mm	GMPD08.9L12.xx	304,8 mm	44 mm
	12 in	1 47/64"		12 in	1 47/64"		12 in	1 47/64"

\* Stainless Steel Bright finish has a Satin inner profile

Everyone Millwork Pulls shall not be used on appliance doors when the appliance is firmly connected to the door.

Genuine leather is a natural material that may exhibit marks, lines, wrinkles, and color variation.