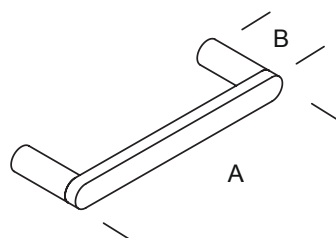
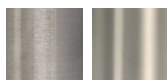


## Design 7



### FINISHES .XX

#### STAINLESS STEEL



Satin  
.44

Bright \*  
.43

#### STAINLESS STEEL POWDER COATED



White  
.31

Champagne  
.38

Bronze  
.39



Grey  
.32

Black  
.40

#### STAINLESS STEEL POWDER COATED AMC



Transparent  
Satin  
.99

Transparent  
Bright  
.99

Black  
.99

White  
.99

#### COPPER PLATED WITHOUT COATING



Semi-Bright  
.58

Black burnished steel fixing screws  
Copper plated finish can vary significantly  
from batch to batch

#### STAINLESS STEEL PVD GOLD



Satin  
.80

Black or white burnished steel fixing screws

ART.	A	B
<b>GMP.D07.0005. xx</b>	127 mm 5 in	37 mm 1 29/64"
<b>GMP.D07.0006. xx</b>	152,4 mm 6 in	37 mm 1 29/64"
<b>GMP.D07.0007. xx</b>	177,8 mm 7 in	37 mm 1 29/64"
<b>GMP.D07.0008. xx</b>	203,2 mm 8 in	37 mm 1 29/64"
<b>GMP.D07.0009. xx</b>	228,6 mm 9 in	37 mm 1 29/64"

\* Stainless Steel Bright finish has a Satin inner profile