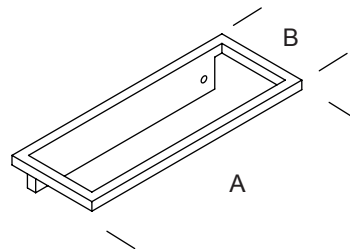
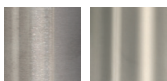


Design 2



FINISHES .XX

STAINLESS STEEL



Satin
.44

Bright *
.43

STAINLESS STEEL POWDER COATED



White
.31

Champagne
.38

Bronze
.39



Grey
.32

Black
.40

STAINLESS STEEL POWDER COATED

AMC



Transparent
Satin
.99

Transparent
Bright
.99

Black
.99

White
.99

COPPER PLATED WITHOUT COATING



Semi-Bright
.58

Black burnished steel fixing screws
Copper plated finish can vary significantly
from batch to batch

STAINLESS STEEL PVD GOLD



Satin
.80

Black or white burnished steel fixing screws

ART.	A	B
GMP.D02.0005. xx	127 mm 5 in	58 mm 2 9/32"
GMP.D02.0006. xx	152,4 mm 6 in	58 mm 2 9/32"
GMP.D02.0007. xx	177,8 mm 7 in	58 mm 2 9/32"
GMP.D02.0008. xx	203,2 mm 8 in	58 mm 2 9/32"
GMP.D02.0009. xx	228,6 mm 9 in	58 mm 2 9/32"
GMP.D02.0010. xx	254 mm 10 in	58 mm 2 9/32"
GMP.D02.0011. xx	279,4 mm 11 in	58 mm 2 9/32"
GMP.D02.0012. xx	304,8 mm 12 in	58 mm 2 9/32"

* Stainless Steel Bright finish has a Satin inner profile

Hardwood or medium-density fiberboard (MDF) substrates are recommended when Design 2 and Design 3 pulls are used. Lesser grade materials, such as particle board, could affect connection strength.