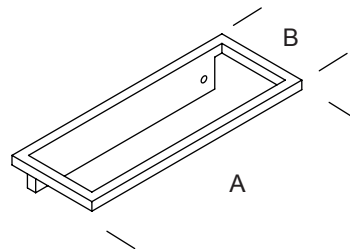
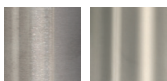


## Design 2



### FINISHES .XX

#### STAINLESS STEEL



Satin  
.44

Bright \*  
.43

#### STAINLESS STEEL POWDER COATED



White  
.31

Champagne  
.38

Bronze  
.39



Grey  
.32

Black  
.40

#### STAINLESS STEEL POWDER COATED

AMC



Transparent  
Satin  
.99

Transparent  
Bright  
.99

Black  
.99

White  
.99

#### COPPER PLATED WITHOUT COATING



Semi-Bright  
.58

Black burnished steel fixing screws  
Copper plated finish can vary significantly  
from batch to batch

#### STAINLESS STEEL PVD GOLD



Satin  
.80

Black or white burnished steel fixing screws

ART.	A	B
GMP.D02.0005. xx	127 mm 5 in	58 mm 2 9/32"
GMP.D02.0006. xx	152,4 mm 6 in	58 mm 2 9/32"
GMP.D02.0007. xx	177,8 mm 7 in	58 mm 2 9/32"
GMP.D02.0008. xx	203,2 mm 8 in	58 mm 2 9/32"
GMP.D02.0009. xx	228,6 mm 9 in	58 mm 2 9/32"
GMP.D02.0010. xx	254 mm 10 in	58 mm 2 9/32"
GMP.D02.0011. xx	279,4 mm 11 in	58 mm 2 9/32"
GMP.D02.0012. xx	304,8 mm 12 in	58 mm 2 9/32"

\* Stainless Steel Bright finish has a Satin inner profile

Hardwood or medium-density fiberboard (MDF) substrates are recommended when Design 2 and Design 3 pulls are used. Lesser grade materials, such as particle board, could affect connection strength.