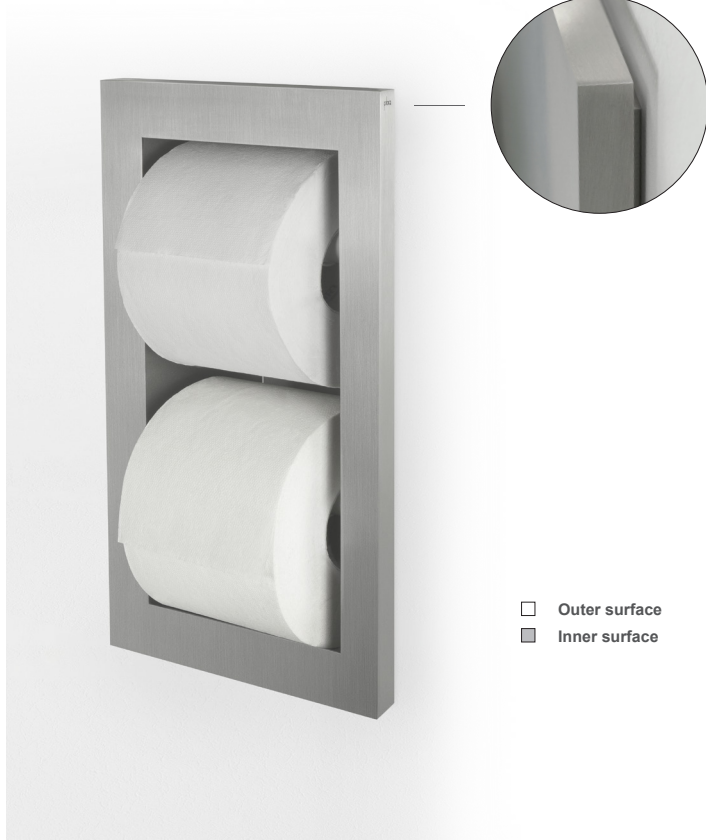


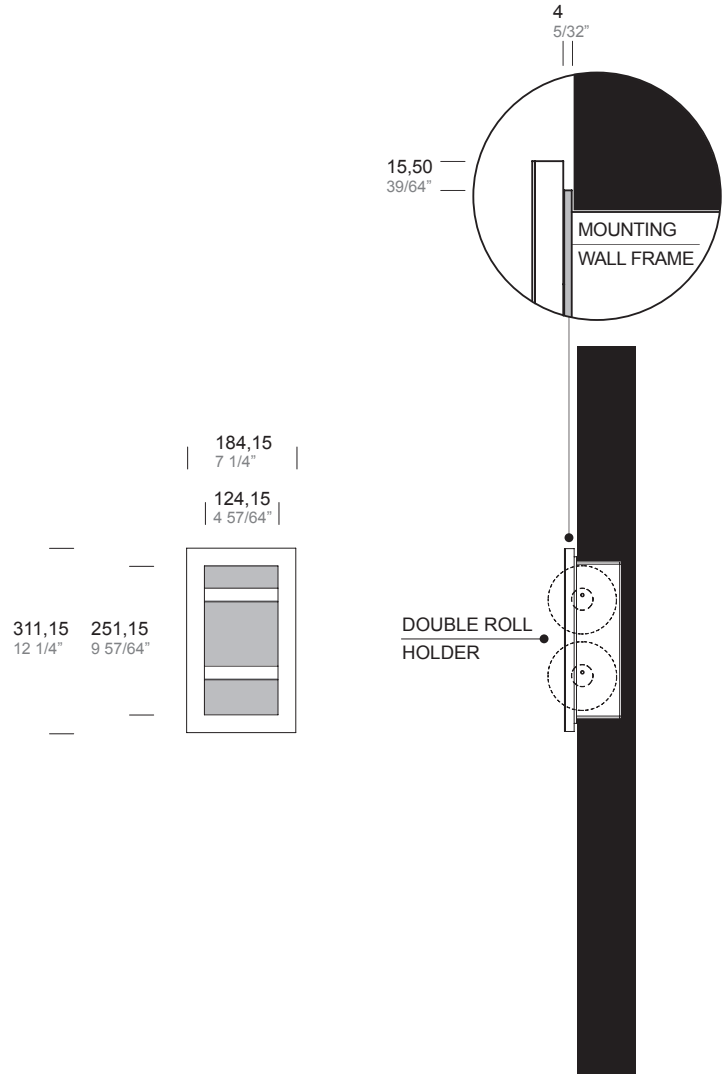
ITEM

GBA.113.0000. xx

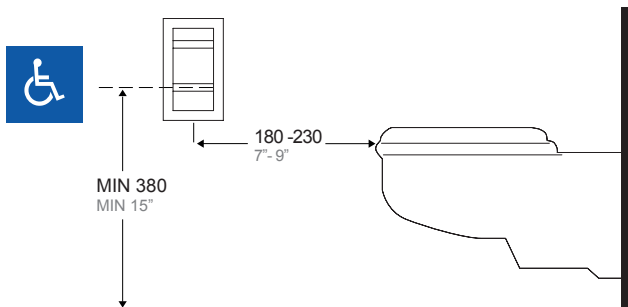
TOILET TISSUE DISPENSER DOUBLE SMALL ROLL - RECESSED



□ Outer surface  
■ Inner surface



**WALL OPENING**  
Height: 10 3/4" (273 mm)  
Width: 5 3/8" (137 mm)  
Depth: 3 1/8" (79 mm)



.XX STANDARD COMBINATION FINISHES OUTER AND INNER SURFACE

	SATIN	POWDER COATED				
□ OUTER	.44	.31	.38	.39	.32	.40
■ INNER AND MOUNTING WALL FRAME	.XX	.31	.38	.39	.32	.40

INNER SURFACE FINISH OPTIONS ON REQUEST \*  
\* minimum order quantity

ANTI-MICROBIAL COATING

	.99
AMC	

For more information on compliant location see project guide page 137.

The manufacturer reserves the right to alter, improve and discontinue any features of the product [make changes and improvements in designs and dimensions] without notice.

**SPECIFICATION:**

Double small roll toilet tissue dispenser for recessed installation with overall dimensions 7-1/4" W x 12-1/4" H and 13/16" total projection from wall.

Mounting wall frame in 5/32" (4 mm) thick welded on a all-welded construction in 3/64" (1 mm) thick type 316L stainless steel with powder coated finish.

Frame with beautiful non-rounded design made with 5/64" (2 mm) thick type 316L stainless steel welded-per-point in satin finish.

The dispenser accommodates two toilet tissue rolls.

Fits standard size toilet paper rolls up to a maximum of 5" (127 mm) diameter x 4-5/32" (105,5 mm) width with standard core.

**OPERATION:**

To replace the roll once is finished push or pull the exposed portion of the spring loaded spindle toward one side, to retract it. Remove the spindle and finished roll and replace the roll with a new one. Then reinstall the spindle with the new roll in the original location.

**INSTALLATION:**

Provide framed rough wall opening 10-3/4" height x 5-3/8" width (273 x 137 mm). Suggested depth to finish face of wall is 3-1/4" (83 mm).

Allow clearance for construction features that may protrude into rough wall opening from opposite wall and avoid pipes, vents and conduits.

Mount unit into wall opening and secure with provided fixing screws in 4 mounting holes on the recessed cabinet.

**NOTE:**

On the satin finish, possible differences in the brushing are the result of the manufacturing process and must be considered acceptable.

Minimal welding discontinuities must be considered acceptable.

