



ITEM

GBA.112.0000. xx.1  
RIGHT

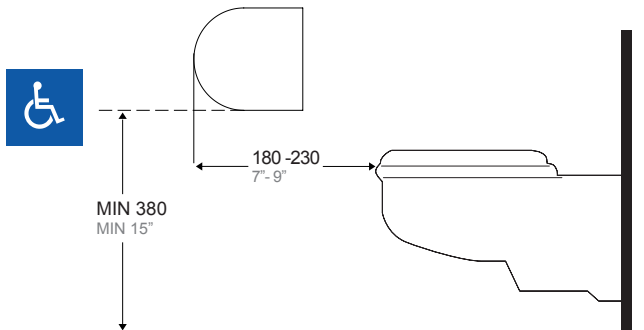
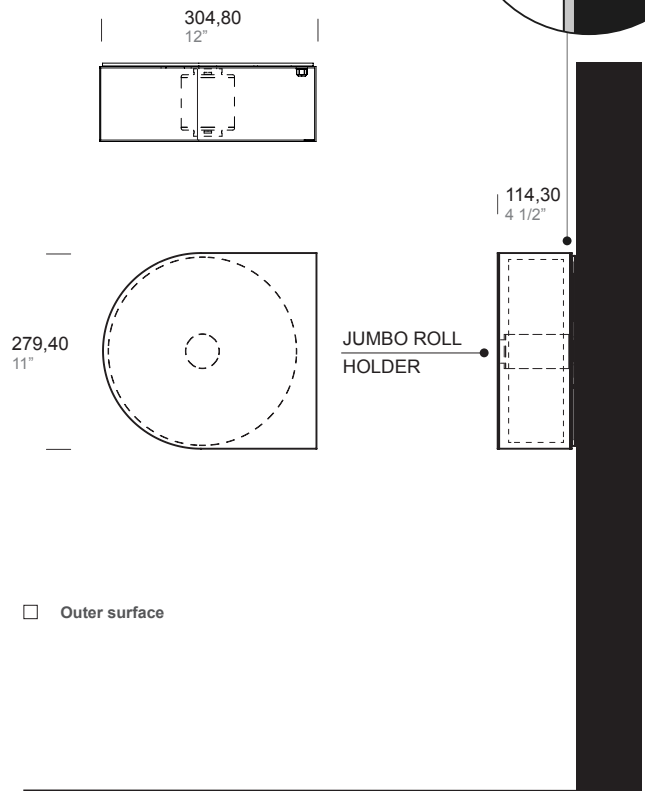
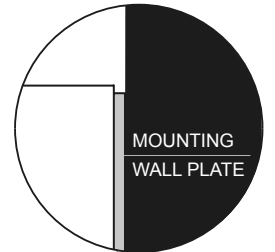


TOILET TISSUE DISPENSER LARGE ROLL - SURFACE MOUNTED

GBA.112.0000. xx.2  
LEFT



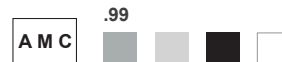
RIGHT



.XX STANDARD COMBINATION FINISHES OUTER SURFACE  
AND MOUNTING WALL PLATE

	SATIN	POWDER COATED				
<input type="checkbox"/> OUTER	.44	.31	.38	.39	.32	.40
<input type="checkbox"/> MOUNTING WALL PLATE	.XX	.31	.38	.39	.32	.40

ANTI-MICROBIAL COATING



For more information on compliant location see project guide page 137.

The manufacturer reserves the right to alter, improve and discontinue any features of the product [make changes and improvements in designs and dimensions] without notice.



**SPECIFICATION:**

Surface mounted single jumbo roll toilet tissue dispenser with overall dimensions 12" W x 11" H and 4-1/2" total projection from wall.  
 Mounting plate in 5/32" (4 mm) thick type 316L stainless steel with powder coated finish.  
 Door with beautiful non-rounded design made with 5/64" (2 mm) thick type 316L stainless steel all-welded in satin finish.  
 Fits standard size toilet paper rolls up to a maximum of 10" (254 mm) diameter x 4-5/32" (105,5 mm) width with standard core diameter 1-5/8" (40 mm) or 3" (75 mm) using the provided spindle adapter.  
 Right and left version available.  
 One key grey RAL 9007 powder coated included.

**OPERATION:**

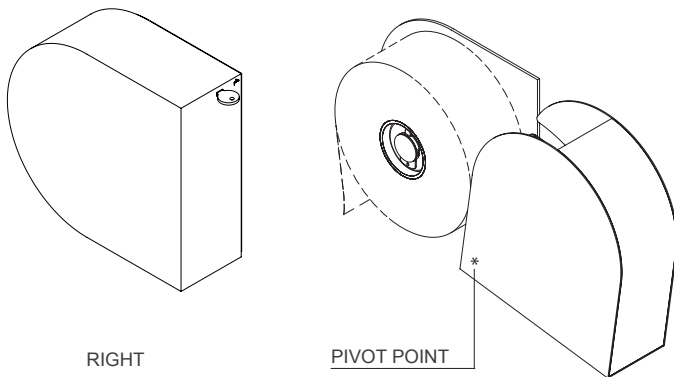
Use provided key from side hole to open, lift up and rotate the door to open and have access to the roll for replacing. Spindle or adapter can accommodate one toilet tissue roll up to a maximum of 10" (254 mm) diameter x 4-5/32" (105,5 mm) width with standard core diameter 1-5/8" (40 mm) or 3" (75 mm).

**INSTALLATION:**

Place unit on wall in desired mounting position and use mounting holes as template to mark holes location.  
 For plaster or dry wall construction, provide concealed backing to comply with local building codes, then secure with screws (not furnished).  
 For other wall surfaces provide fiber plugs or expansion shields for use with screws (not furnished).  
 For partitions with particle-board or other solid core, secure with sheet-metal screws (not furnished).  
 For hollow-core metal partitions, provide solid backing into which the sheet-metal screws can be secured.  
 If two units are installed back-to-back, then provide threaded sleeves and machine screws for the full thickness of partition; back-to-back installation is possible for 1 right and 1 left version of item.

**NOTE:**

On the satin finish, possible differences in the brushing are the result of the manufacturing process and must be considered acceptable.  
 Minimal welding discontinuities must be considered acceptable.



OPENING KEY DETAIL

**KEY INCLUDED**

ITEM

**GBA.100.0KEY.99**