



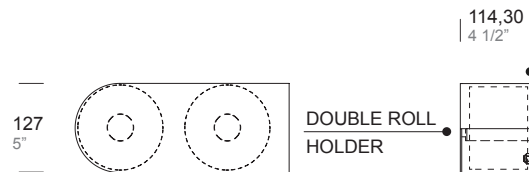
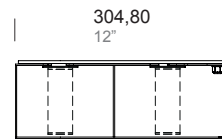
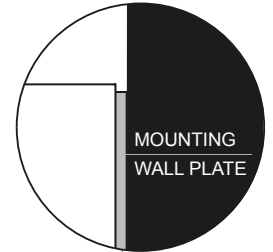
ITEM

GBA.111.0000. xx.1
RIGHT

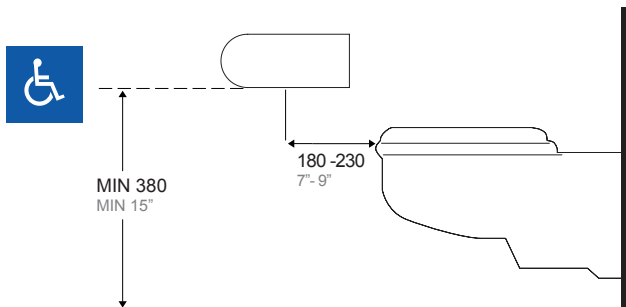


TOILET TISSUE DISPENSER DOUBLE SMALL ROLL COVERED - SURFACE MOUNTED

GBA.111.0000. xx.2
LEFT



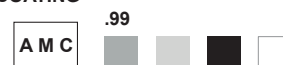
Outer surface



.XX STANDARD COMBINATION FINISHES OUTER SURFACE AND MOUNTING WALL PLATE

	SATIN	POWDER COATED				
<input type="checkbox"/> OUTER	.44	.31	.38	.39	.32	.40
<input type="checkbox"/> MOUNTING WALL PLATE	.XX	.31	.38	.39	.32	.40

ANTI-MICROBIAL COATING



For more information on compliant location see project guide page 137.

The manufacturer reserves the right to alter, improve and discontinue any features of the product [make changes and improvements in designs and dimensions] without notice.



SPECIFICATION:

Surface mounted double small roll toilet tissue dispenser with overall dimensions 12" W x 5" H and 4-1/2" total projection from wall.
 Mounting plate in 5/32" (4 mm) thick type 316L stainless steel with powder coated finish.
 Door with beautiful non-rounded design made with 5/64" (2 mm) thick type 316L stainless steel all-welded in satin finish.
 Removable spindle adapter to allow use of roll with large core.
 Fits standard size toilet paper rolls up to a maximum of 5" (127 mm) diameter x 4-5/32" (105,5 mm) width with standard core.
 Right and left version available.
 One key grey RAL 9007 powder coated included.

OPERATION:

Use provided key from side hole to open, lift up and rotate the door to open and have access to the roll for replacing. Spindles can accommodate two toilet tissue rolls up to a maximum of 5" (127 mm) diameter 4-5/32" (105,5 mm) width with standard core.

INSTALLATION:

Place unit on wall in desired mounting position and use mounting holes as template to mark holes location.
 For plaster or dry wall construction, provide concealed backing to comply with local building codes, then secure with screws (not furnished).
 For other wall surfaces provide fiber plugs or expansion shields for use with screws (not furnished).
 For partitions with particle-board or other solid core, secure with sheet-metal screws (not furnished).
 For hollow-core metal partitions, provide solid backing into which the sheet-metal screws can be secured.
 If two units are installed back-to-back, then provide threaded sleeves and machine screws for the full thickness of partition; back-to-back installation is possible for 1 right and 1 left version of item.

NOTE:

On the satin finish, possible differences in the brushing are the result of the manufacturing process and must be considered acceptable.
 Minimal welding discontinuities must be considered acceptable.

