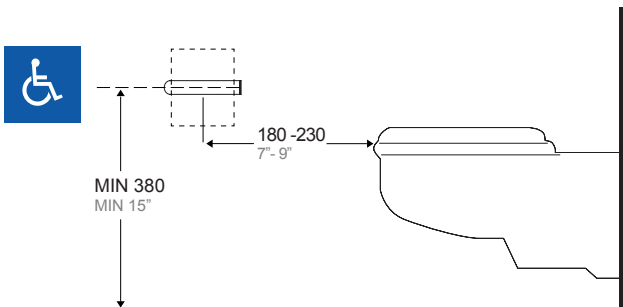
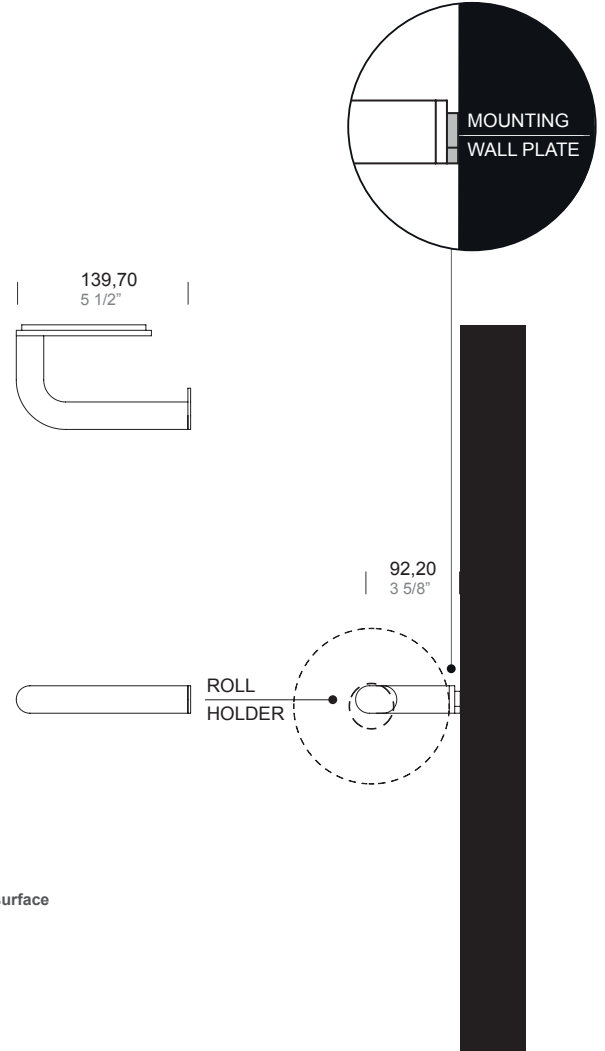


ITEM
GBA.110.0000. xx TOILET TISSUE DISPENSER SINGLE SMALL ROLL ROUND TUBE - SURFACE MOUNTED



.XX STANDARD COMBINATION FINISHES OUTER SURFACE
AND MOUNTING WALL PLATE

	SATIN	POWDER COATED				
OUTER	.44	.31	.38	.39	.32	.40
MOUNTING WALL PLATE	.XX	.31	.38	.39	.32	.40

ANTI-MICROBIAL COATING

	.99
AMC	

For more information on compliant location see project guide page 137.

The manufacturer reserves the right to alter, improve and discontinue any features of the product [make changes and improvements in designs and dimensions] without notice.

**SPECIFICATION:**

Surface mounted stainless steel tubular toilet tissue dispenser for small roll. Overall dimensions 5" (W) x 25/32" (H) and 3-5/8" total projection from wall.

Sheet metal 5/32" (4 mm) thick type 316L stainless steel welded to a bended Ø20 mm type 316L stainless steel tube with satin finish.

Fits standard size toilet paper rolls up to a maximum of 5" (127 mm) diameter x 4-11/32" (110,5 mm) width with standard core.

INSTALLATION:

Use the wall plate as template to mark holes in desired mounting location and secure with provided fixing screws and plugs. Then attach the toilet tissue dispenser using the provided M4 screws.

NOTE:

On the satin finish, possible differences in the brushing are the result of the manufacturing process and must be considered acceptable. Minimal welding discontinuities must be considered acceptable.

