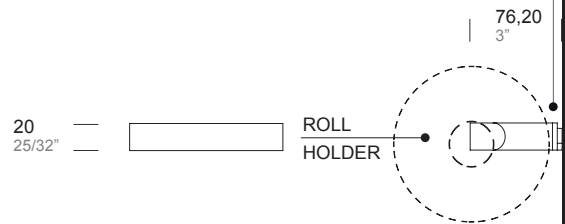
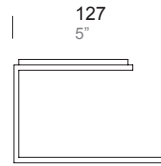
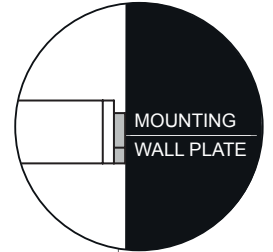


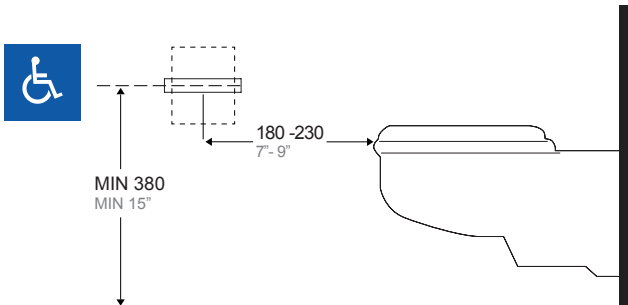
**ITEM**

**GBA.109.0000.xx**

**TOILET TISSUE DISPENSER SINGLE SMALL ROLL FLAT - SURFACE MOUNTED**



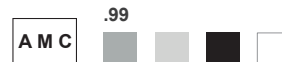
Outer surface



**.XX STANDARD COMBINATION FINISHES OUTER SURFACE AND MOUNTING WALL PLATE**

	SATIN	POWDER COATED				
<input type="checkbox"/> OUTER	.44	.31	.38	.39	.32	.40
<input type="checkbox"/> MOUNTING WALL PLATE	.XX	.31	.38	.39	.32	.40

**ANTI-MICROBIAL COATING**



For more information on compliant location see project guide page 137.

The manufacturer reserves the right to alter, improve and discontinue any features of the product [make changes and improvements in designs and dimensions] without notice.

**SPECIFICATION:**

Surface mounted stainless steel toilet tissue dispenser for small roll. Overall dimensions 5" (W) x 25/32" (H) and 3" total projection from wall. Sheet metal 5/32" (4 mm) thick type 316L stainless steel welded with satin finish. Fits standard size toilet paper rolls up to a maximum of 5" (127 mm) diameter x 4-11/32" (110,5 mm) width with standard core.

**INSTALLATION:**

Use the wall plate as template to mark holes in desired mounting location and secure with provided fixing screws and plugs. Then attach the toilet tissue dispenser using the provided M4 screws.

**NOTE:**

On the satin finish, possible differences in the brushing are the result of the manufacturing process and must be considered acceptable. Minimal welding discontinuities must be considered acceptable.

