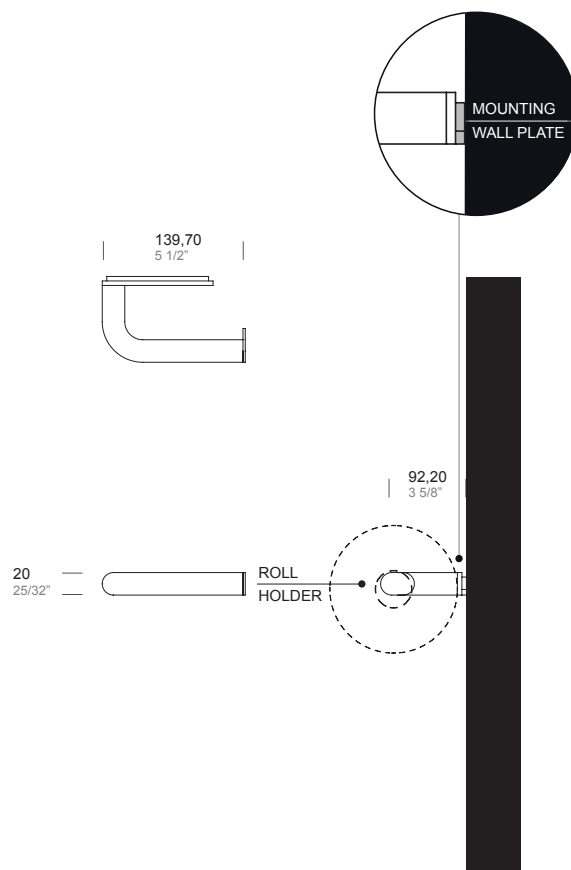
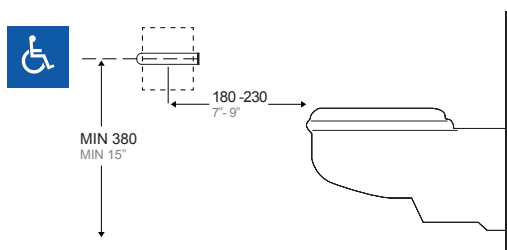


ITEM	
GBA.110.0000. xx	TOILET TISSUE DISPENSER SINGLE SMALL ROLL ROUND TUBE - SURFACE MOUNTED


☐ Outer surface


### SPECIFICATION:

Surface mounted stainless steel tubular toilet tissue dispenser for small roll. Overall dimensions 5" (W) x 25/32" (H) and 3-5/8" total projection from wall.

Sheet metal 5/32" (4 mm) thick type 316L stainless steel welded to a bended Ø20 mm type 316L stainless steel tube with satin finish. Fits standard size toilet paper rolls up to a maximum of 5" (127 mm) diameter x 4-11/32" (110,5 mm) width with standard core.

### INSTALLATION:

Use the wall plate as template to mark holes in desired mounting location and secure with provided fixing screws and plugs. Then attach the toilet tissue dispenser using the provided M4 screws.

### NOTE:

On the satin finish, possible differences in the brushing are the result of the manufacturing process and must be considered acceptable. Minimal welding discontinuities must be considered acceptable.