




ITEM	A
4CS.445.001U . xx	29" 
4CS.445.002U . xx	32" 
4CS.445.003U . xx	34" 



SWING UP GRAB BAR

Rail 3/64" (1,2 mm) thick in type-316 stainless steel tubing with 1-17/64" (32 mm) outer diameter.

Backplate in type-316 stainless steel 13/64 (5 mm) thick with fully recyclable polyamide-6 wall protection.

4 screw holes for attachment to wall

Spring Load Rotation system with adjustable friction in fully recyclable polyamide-6 and diecast aluminum inner core.

Strength. PBA 4CS Swing-up grab bars can support loads according to the above chart if properly installed.

MOUNTING KITS not included.

Optional mounting kit for concrete, natural stone, solid brick and hollow brick: KIT 4CN.0VM.001A.00.

Optional mounting kit for sheetrock wall and wooden plate: KIT 4CN.0VM.009A.00.

SAFETY WARNING



Grab bars must be firmly secured to the anchors and the wall in order for them to support the weight they are designed for.

Grab bars alone are not stronger than anchors and walls. In case the grab bar is not securely anchored to the wall, the building owner or maintenance personnel must remove it from service to avoid any accident or injury.

SUSTAINABILITY

This product contributes to LEED® credit

STAINLESS STEEL AISI 316

.XX FINISH	.44	.43
.44 SATIN		
.43 BRIGHT		

OPERATION

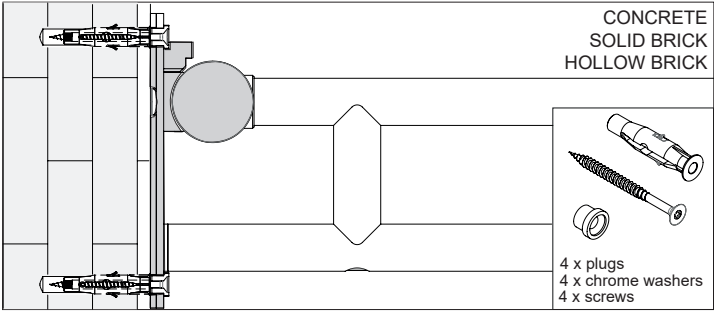
Swing-up grab bar is manually raised for approach or departure and lowered to horizontal position for support. Once grab bar is raised to the full upright (vertical) position, counterweighted design prevents grab bar from falling back down to the full horizontal position.

GRAB BAR INSTALLATION

Provide concealed anchor device or backing as specified or required in accordance with local building codes before wall is finished. Fasten mounting plate to anchor device or backing with four screws. Concealed anchor devices and mounting screws are not included with PBA Swing-Up grab bars and must be specified as optional mounting kit.

AVAILABLE MOUNTING KITS:

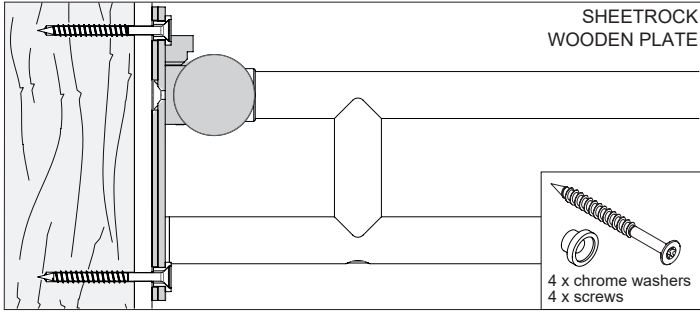
4CN.0VM.001A.00



CONCRETE
SOLID BRICK
HOLLOW BRICK

4 x plugs
4 x chrome washers
4 x screws

4CN.0VM.009A.00

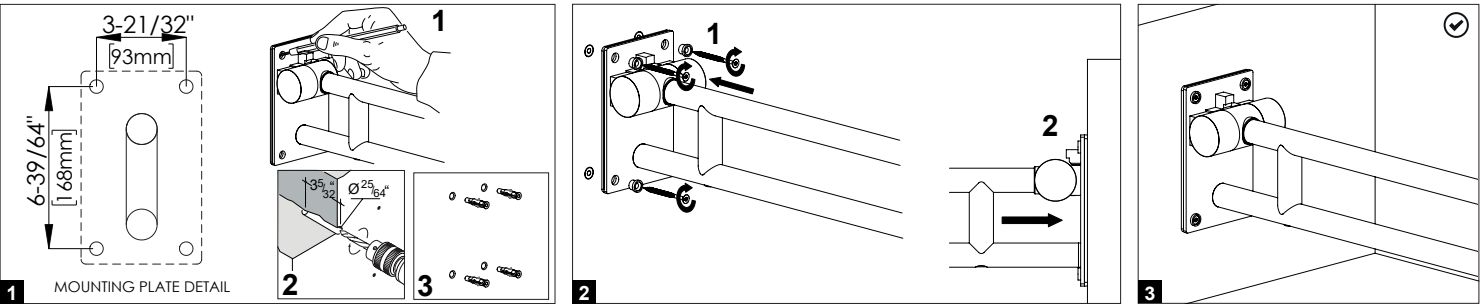


SHEETROCK
WOODEN PLATE

4 x chrome washers
4 x screws

INSTALLATION ON WALL WITH PBA KIT 4CN.0VM.001A.00

Provide concealed anchor device or backing as specified or required in accordance with local building codes before wall is finished. Once desired mounting location is determined, use wall plate as a template to mark location of mounting screws. Drill Ø25/64" (10 mm) and insert plugs. Place Swing-Up grab bar and drive mounting screws with brass washers into plugs and secure tightly. Press all snap-over caps into place to conceal mounting screws.

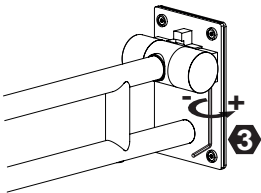


INSTALLATION ON WALL WITH PBA KIT 4CN.0VM.009A.00

Place Swing-Up grab bar in desired mounting location and drive mounting screws with brass washers and secure tightly. Press all snap-over caps into place to conceal mounting screws.

ADJUSTABLE FRICTION

Install Swing-Up grab bar in desired mounting location. Screw or unscrew the set screw located under the rotation mechanism to adjust the friction.



CLEANING AND MAINTENANCE

DO NOT USE abrasive liquid detergents

