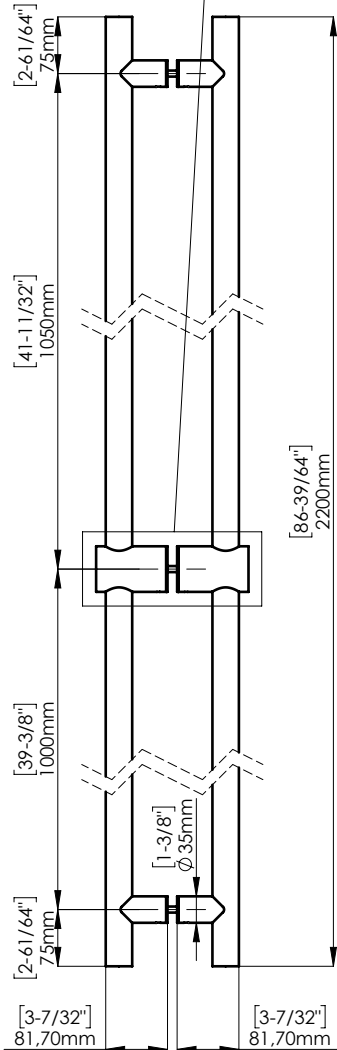
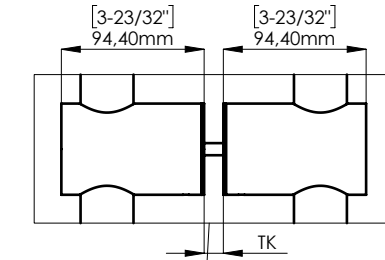
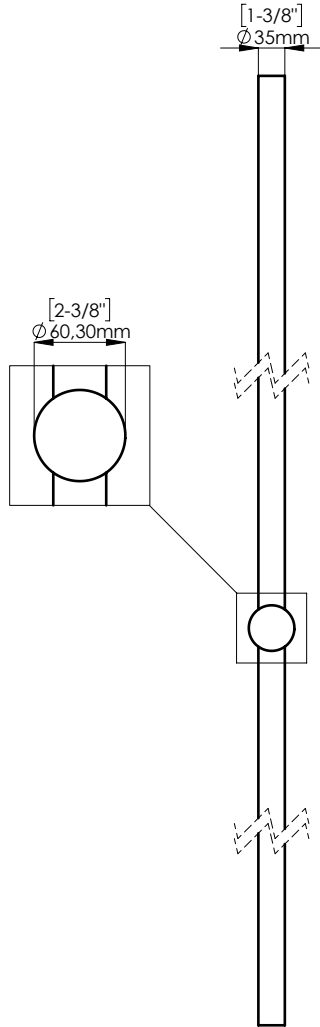
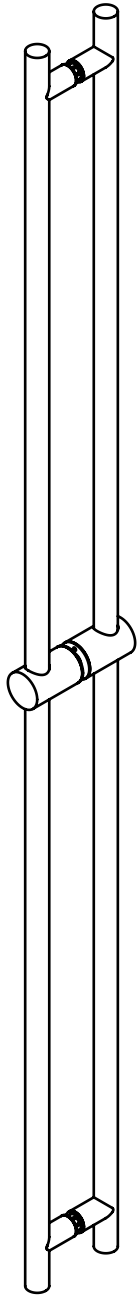
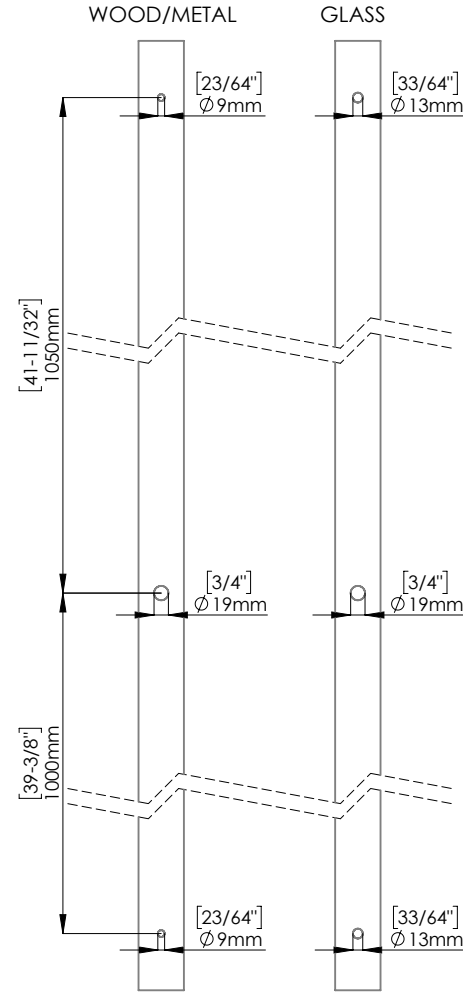


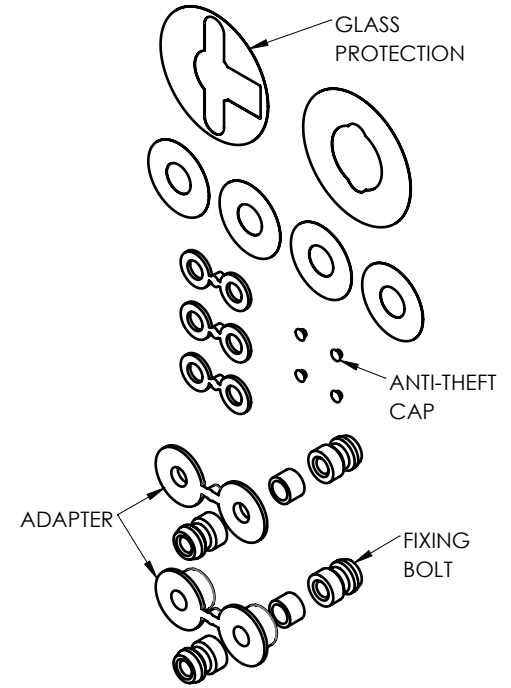
FIXING HARDWARE: BTB FIXING KIT INCLUDED
STANDARD THICKNESS: FROM 8 mm TO 20 mm
OTHER THICKNESS KIT AVAILABLE. PLEASE SPECIFY



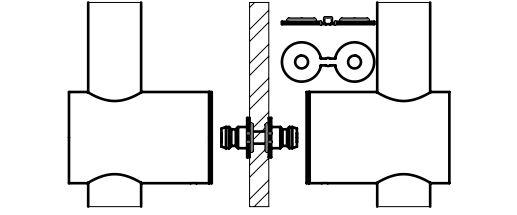
DOOR PREPARATION



INCLUDED ACCESSORIES AND FIXING



ADAPTER FOR INSTALLATION ON SINGLE GLASS



ADAPTER FOR INSTALLATION ON DOUBLE GLASS

