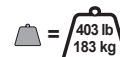


ITEM	A	B
4CU.442.001U . 4R	24 3/4"	36 3/4"



TWO-WALL GRAB BAR

Rail 1/16" (1,5 mm) thick, in pure copper alloy CU-DHP(CW024A) with 1-17/64" (32 mm) outer diameter. Stainless steel bends connected with 3-3/16" (Ø 80 mm) flanges.

Cover in type 316L stainless steel. Mounting flanges with steel core 1/8" (3 mm) thickness, stainless steel covers and fully recyclable polyamide-6 wall protection. Each cover snaps over mounting flange to conceal mounting screws. Clearance between the grab bar and wall is 1-1/2" (38 mm).

Strength. PBA 4CU Two-wall grab bars can support loads up to 403 pounds (183 kg) if properly installed.

MOUNTING KITS not included.

Optional mounting kit for concrete, natural stone, solid brick and hollow brick: KIT 4CN.0VM.0004.00.

Optional mounting kit for sheetrock wall and wooden plate: KIT 4CN.0VM.0010.00.

Optional mounting kit for toilet partition: KIT 4CN.0VM.0040.00.

One Mounting kit is required for each flange.

SAFETY WARNING

Grab bars must be firmly secured to the anchors and the wall in order for them to support the weight they are designed for. Grab bars alone are not stronger than anchors and walls. In case the grab bar is not securely anchored to the wall, the building owner or maintenance personnel must remove it from service to avoid any accident or injury.

SUSTAINABILITY

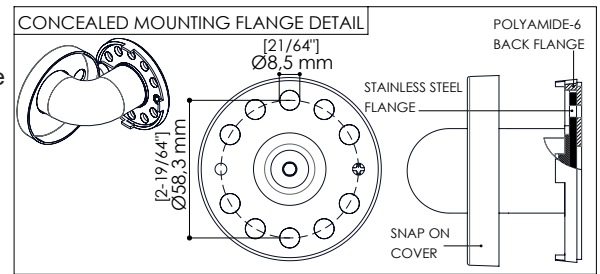
This product contributes to LEED® credit

GRAB BAR INSTALLATION

Provide concealed anchor device or backing as specified or required in accordance with local building codes before wall is finished.

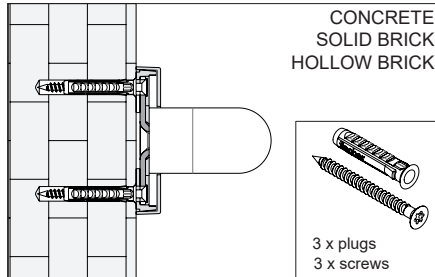
Fasten concealed mounting flanges to anchor device or backing with three screws in each flange.

Concealed anchor devices and mounting screws are not included with PBA grab bars and must be specified as optional mounting kit.

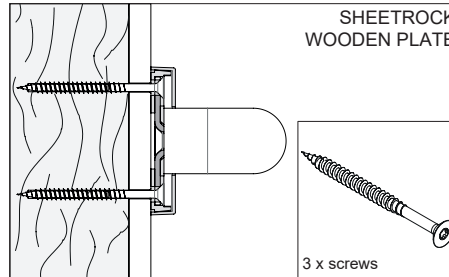


AVAILABLE MOUNTING KITS:

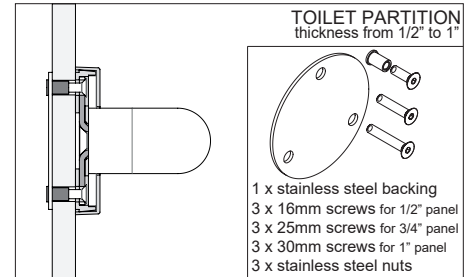
4CN.0VM.0004.00



4CN.0VM.0010.00

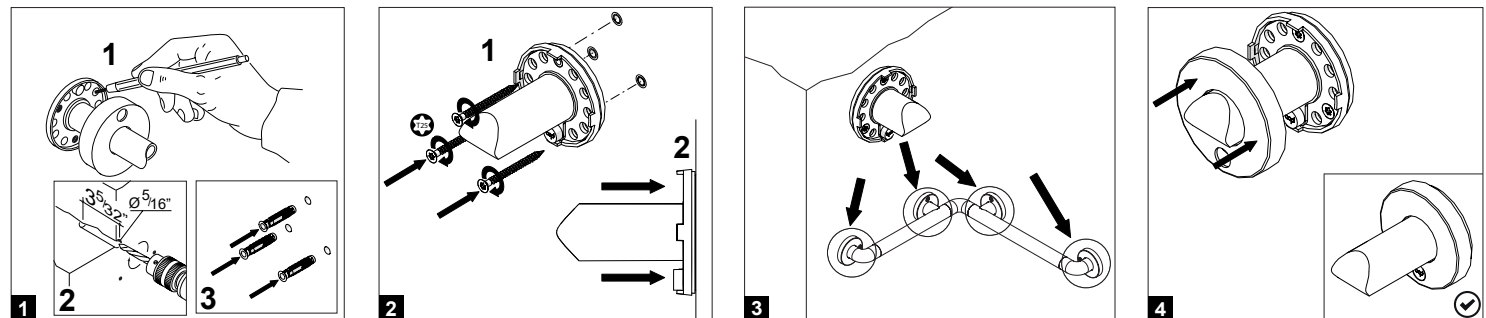


4CN.0VM.0040.00



INSTALLATION ON WALL WITH PBA KIT 4CN.0VM.0004.00

Place grab bar in desired mounting location. Use mounting flanges as a template to mark location of mounting screws. Mark screw location for each mounting flange and remove grab bar from wall. Drill Ø5/16" (8 mm) and insert plugs. Place grab bar and drive mounting screws into plugs and secure tightly. Press all snap-flange covers into place to conceal mounting flanges.



INSTALLATION ON WALL WITH PBA KIT 4CN.0VM.0010.00

Place grab bar in desired mounting location. Drive mounting screws in each flange and secure tightly. Press all snap-flange covers into place to conceal mounting flanges.

INSTALLATION ON TOILET PARTITION WITH PBA 4CN.0VM.0040.00

Using grab bar as a template and stainless steel backing to find holes position, mark toilet partition panel. Drill Ø5/16" (8 mm) holes for connectors. Insert connectors through backplate and into holes in panel. Secure grab bar to connectors using screws furnished by manufacturer. Press all snap-flange covers into place to conceal mounting flanges.

CLEANING AND MAINTENANCE

DO NOT USE abrasive liquid detergents

