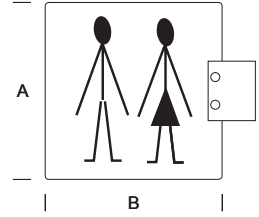
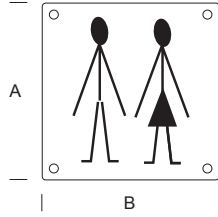

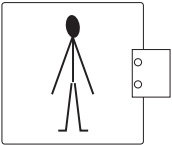

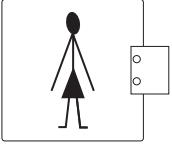
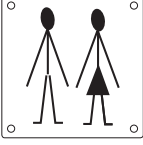
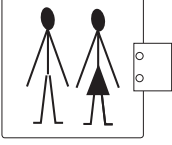

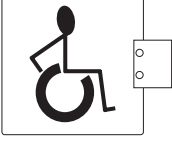
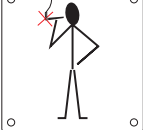
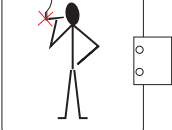


CODE	MATERIAL	FINISH		.XX	* indicative colors
2MM.	STAINLESS STEEL	Standard:			
4CS.		SATIN	LRV 53	.44	■
5CS.	AISI 316L	BRIGHT	LRV 70	.43	■
		POWDER-COATED	Black Ral 9005 (To match with Pba Black Aluminum)		.40
		White Ral 9010		.31	□
		Grey		.32	■
		Champagne		.38	■
		Bronze (To match with Pba Bronze Aluminum)		.39	■
		Silver		.41	■
		COLOURS ON REQUEST TO MATCH ANY RAL #		.99	
		Screws, grub screws and plastic parts non powdercoated. Available on request depending on quantities.			



	ITEM	A	B		ITEM	A	B		
	• 2MM.401.000U. xx	150 mm 5 15/16"	150 mm 5 15/16"			2MM.401.00UD. xx	150 mm 5 15/16"	150 mm 5 15/16"	NOT POWDER COATED
	• 2MM.402.000U. xx	150 mm 5 15/16"	150 mm 5 15/16"			2MM.402.00UD. xx	150 mm 5 15/16"	150 mm 5 15/16"	NOT POWDER COATED
	• 2MM.403.000U. xx	150 mm 5 15/16"	150 mm 5 15/16"			2MM.403.00UD. xx	150 mm 5 15/16"	150 mm 5 15/16"	NOT POWDER COATED
	• 2MM.404.000U. xx	150 mm 5 15/16"	150 mm 5 15/16"			2MM.404.00UD. xx	150 mm 5 15/16"	150 mm 5 15/16"	NOT POWDER COATED
	• 2MM.406.000U. xx	150 mm 5 15/16"	150 mm 5 15/16"			2MM.406.00UD. xx	150 mm 5 15/16"	150 mm 5 15/16"	NOT POWDER COATED

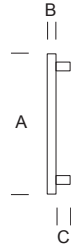
.XX = FINISH CODE

**STAINLESS STEEL**  
 .43 BRIGHT STAINLESS STEEL (ANSI/BHMA 629 - USD32)  
 .44 SATIN STAINLESS STEEL (ANSI/BHMA 630 - USD32D)

**STAINLESS STEEL POWDER-COATED ON REQUEST ON SELECTED ITEM = •**  
 .40 BLACK RAL 9005 - TO MATCH WITH PBA BLACK ALUMINIUM  
 .31 WHITE RAL 9010  
 .32 GREY  
 .38 CHAMPAGNE  
 .39 BRONZE - TO MATCH WITH PBA BRONZE ALUMINIUM  
 .41 SILVER

.99 COLORS ON REQUEST TO MATCH ANY RAL #  
 (screws, grub screws and plastic parts non powder-coated)  
 available on request depending on quantities

# 106



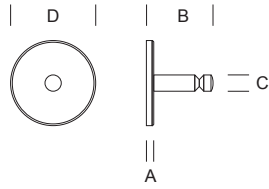
	ITEM	A	B	C		ITEM	A	B	C	
0	2MM.600.000P. xx	75 mm 2 15/16"	4 mm 5/32"	7 mm 9/32"		7	2MM.607.007P. xx	75 mm 2 15/16"	4 mm 5/32"	7 mm 9/32"
1	2MM.601.001P. xx	75 mm 2 15/16"	4 mm 5/32"	7 mm 9/32"		8	2MM.608.008P. xx	75 mm 2 15/16"	4 mm 5/32"	7 mm 9/32"
2	2MM.602.002P. xx	75 mm 2 15/16"	4 mm 5/32"	7 mm 9/32"		9	2MM.609.009P. xx	75 mm 2 15/16"	4 mm 5/32"	7 mm 9/32"
3	2MM.603.003P. xx	75 mm 2 15/16"	4 mm 5/32"	7 mm 9/32"		a	2MM.600.00AP. xx	55 mm 2 15/16"	4 mm 5/32"	7 mm 9/32"
4	2MM.604.004P. xx	75 mm 2 15/16"	4 mm 5/32"	7 mm 9/32"		b	2MM.600.00BP. ..	75 mm 2 15/16"	4 mm 5/32"	7 mm 9/32"
5	2MM.605.005P. xx	75 mm 2 15/16"	4 mm 5/32"	7 mm 9/32"		c	2MM.600.00CP. xx	55 mm 2 15/16"	4 mm 5/32"	7 mm 9/32"
6	2MM.606.006P. xx	75 mm 2 15/16"	4 mm 5/32"	7 mm 9/32"		d	2MM.600.00DP. xx	75 mm 2 15/16"	4 mm 5/32"	7 mm 9/32"

.XX = FINISH CODE

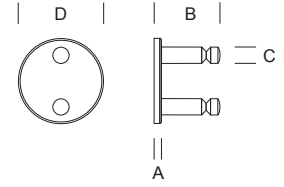
**STAINLESS STEEL**  
 .43 BRIGHT STAINLESS STEEL (ANSI/BHMA 629 - USD32)  
 .44 SATIN STAINLESS STEEL (ANSI/BHMA 630 - USD32D)

**STAINLESS STEEL POWDER-COATED ON REQUEST ON SELECTED ITEM = ●**  
 .40 BLACK RAL 9005 - TO MATCH WITH PBA BLACK ALUMINIUM  
 .31 WHITE RAL 9010  
 .32 GREY  
 .38 CHAMPAGNE  
 .39 BRONZE - TO MATCH WITH PBA BRONZE ALUMINIUM  
 .41 SILVER

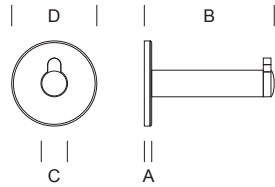
.99 COLORS ON REQUEST TO MATCH ANY RAL #  
 (screws, grub screws and plastic parts non powder-coated)  
 available on request depending on quantities



ITEM	A	B	C	D
<b>4CS.488.0000.xx</b>	4 mm 5/32"	39 mm 1 17/32"	10 mm 25/64"	50 mm 1 31/32"



ITEM	A	B	C	D
<b>4CS.488.000D.xx</b>	4 mm 5/32"	39 mm 1 17/32"	10 mm 25/64"	50 mm 1 31/32"



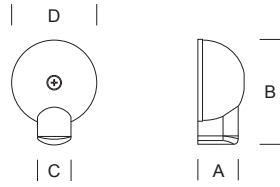
ITEM	A	B	C	D
<b>5CS.562.0000.xx</b>	4 mm 5/32"	76 mm 3"	16 mm 5/8"	50 mm 1 31/32"

.XX = FINISH CODE

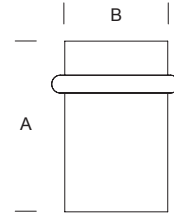
- .30 STAINLESS STEEL
- .43 BRIGHT STAINLESS STEEL (ANSI/BHMA 629 - USD32)
- .44 SATIN STAINLESS STEEL (ANSI/BHMA 630 - USD32D)

- STAINLESS STEEL POWDER-COATED ON REQUEST
- .40 BLACK RAL 9005 - TO MATCH WITH PBA BLACK ALUMINIUM
- .31 WHITE RAL 9010
- .32 GREY
- .38 CHAMPAGNE
- .39 BRONZE - TO MATCH WITH PBA BRONZE ALUMINIUM
- .41 SILVER

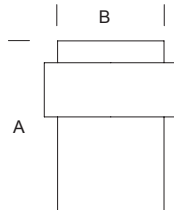
.99 COLORS ON REQUEST TO MATCH ANY RAL #  
(screws, grub screws and plastic parts non powder-coated)  
available on request depending on quantities



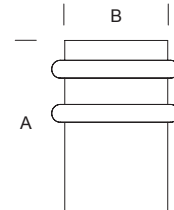
ITEM	A	B	C	D
2MM.040.0000. xx	24 mm 1 5/16"	60 mm 2 23/64"	20 mm 25/32"	50 mm 1 31/32"



ITEM	A	B
2MM.041.0000. xx	40 mm 1 9/16"	29 mm 1 9/64"



ITEM	A	B
2MM.042.0000. xx	40 mm 1 9/16"	29 mm 1 9/64"



ITEM	A	B
2MM.043.0000. xx	40 mm 1 9/16"	29 mm 1 9/64"

.XX = FINISH CODE

- .30 STAINLESS STEEL
- .43 BRIGHT STAINLESS STEEL (ANSI/BHMA 629 - USD32)
- .44 SATIN STAINLESS STEEL (ANSI/BHMA 630 - USD32D)

- .40 STAINLESS STEEL POWDER-COATED ON REQUEST
- .41 BLACK RAL 9005 - TO MATCH WITH PBA BLACK ALUMINIUM
- .31 WHITE RAL 9010
- .32 GREY
- .38 CHAMPAGNE
- .39 BRONZE - TO MATCH WITH PBA BRONZE ALUMINIUM
- .41 SILVER

.99 COLORS ON REQUEST TO MATCH ANY RAL #  
(screws, grub screws and plastic parts non powder-coated)  
available on request depending on quantities