

MORTISE LOCK FOR WOOD AND METAL DOORS

MORTISE LOCK  
FOR WOOD AND METAL DOORS



## MORTISE LOCKS for WOOD OR METAL DOORS

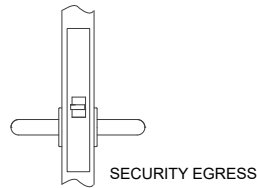
ANSI CODE - FUNCTION  
PBA CODE\*

## OPERATION

OUTSIDE      INSIDE

**F01 - PASSAGE**

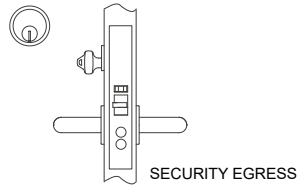
2MM.LCK.OA00.00 - backset 2 1/2" \*\*



LATCHBOLT OPERATED BY LEVER FROM EITHER SIDE AT ALL TIMES

**F04 - OFFICE / CORRIDOR**

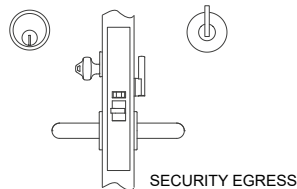
2MM.LCK.OF00.00 - backset 2 1/2" \*\*



LATCHBOLT OPERATED BY LEVER FROM EITHER SIDE, EXCEPT WHEN OUTSIDE LEVER IS LOCKED BY STOP BUTTONS. UNLOCK BY KEY OUTSIDE OR LEVER INSIDE.

**F04 + F13 - OFFICE / ENTRY**

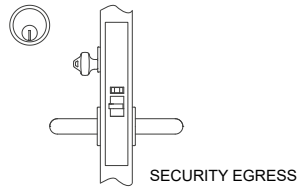
2MM.LCK.OI00.00 - backset 2 1/2" \*\*



LATCHBOLT OPERATED BY LEVER FROM EITHER SIDE, EXCEPT WHEN OUTSIDE LEVER IS LOCKED BY KEY OR THUMBTURN FROM INSIDE. UNLOCK BY KEY OUTSIDE OR THUMBTURN / LEVER FROM INSIDE.

**F05 - CLASSROOM**

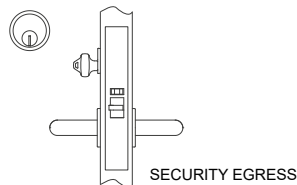
2MM.LCK.0G00.00 - backset 2 1/2" \*\*



LATCHBOLT OPERATED BY LEVER FROM EITHER SIDE, EXCEPT WHEN OUTSIDE LEVER IS LOCKED BY OUTSIDE KEY. UNLOCK BY KEY OUTSIDE OR LEVER INSIDE.

**F07 - STOREROOM**

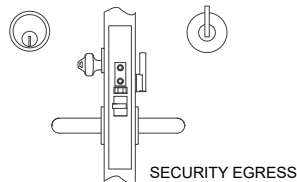
2MM.LCK.OP00.00 - backset 2 1/2" \*\*



LATCHBOLT OPERATED BY KEY OUTSIDE OR BY OPERATING LEVER INSIDE. OUTSIDE LEVER IS ALWAYS INOPERATIVE.

**F13 - DORMITORY**

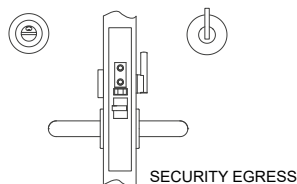
2MM.LCK.OE00.00 - backset 2 1/2" \*\*



LATCHBOLT OPERATED BY LEVER FROM EITHER SIDE, EXCEPT WHEN OUTSIDE LEVER IS LOCKED BY KEY OR THUMBTURN FROM INSIDE AND THE DEADBOLT IS PROJECTED. UNLOCK BY KEY OUTSIDE OR THUMBTURN OR LEVER FROM INSIDE WHICH RETRACT BOTH BOLTS SIMULTANEOUSLY.

**F19 - PRIVACY**

2MM.LCK.OM00.00 - backset 2 1/2" \*\*



LATCHBOLT OPERATED BY LEVER FROM EITHER SIDE, EXCEPT WHEN OUTSIDE LEVER IS LOCKED BY INSIDE THUMBTURN AND THE DEADBOLT IS PROJECTED. UNLOCK BY KEY OUTSIDE OR LEVER FROM INSIDE WHICH RETRACT BOTH BOLTS SIMULTANEOUSLY.



STAINLESS STEEL FACEPLATE INCLUDED



STAINLESS STEEL STRIKE PLATE INCLUDED

\* Lever handles, thumbturns and cylinders not included \*\* Backset 2 3/4" available on request

## MORTISE LOCK

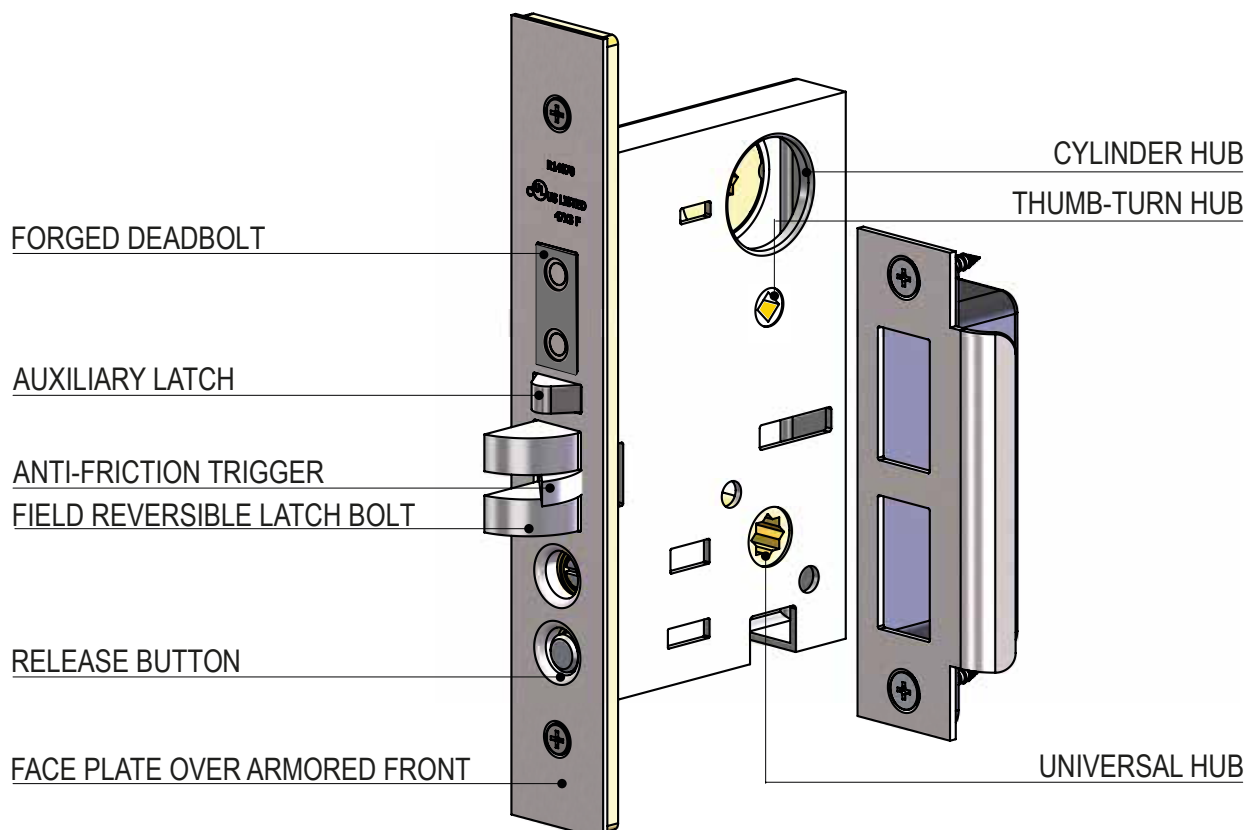
PBA 2MM.LCK SERIES MORTISE LOCKS FOR SOLID DOORS ARE ENGINEERED FOR DURABILITY AND OPTIMUM SECURITY. ALL LOCK CASES ARE CONSTRUCTED WITH QUALITY METAL WORKING PARTS, ENSURING THE LONG LASTING AND TROUBLE FREE OPERATION.

GRADE 1 ACCORDINGLY TO ANSI/BHMA 156.13 - 2005 AND UL – ULC LISTED THE 2MM.LCK MORTISE LOCKS CAN BE SPECIFIED FOR APPLICATION IN RESIDENTIAL, OFFICES, HOTELS, SCHOOLS AND COMMERCIAL BUILDINGS.

AVAILABLE IN SEVEN DIFFERENT FUNCTIONS AND WITH TWO BACKSET (2 ½" AND 2 ¾") THE 2MM.LCK MORTISE LOCKS ARE EQUIPPED WITH A MECHANICAL ANTI-FRICTION LATCH BOLT AND A FULL 1" THROW DEADBOLT WITH TWO HARDENED STEEL ROLLERS FOR MAXIMUM SECURITY.

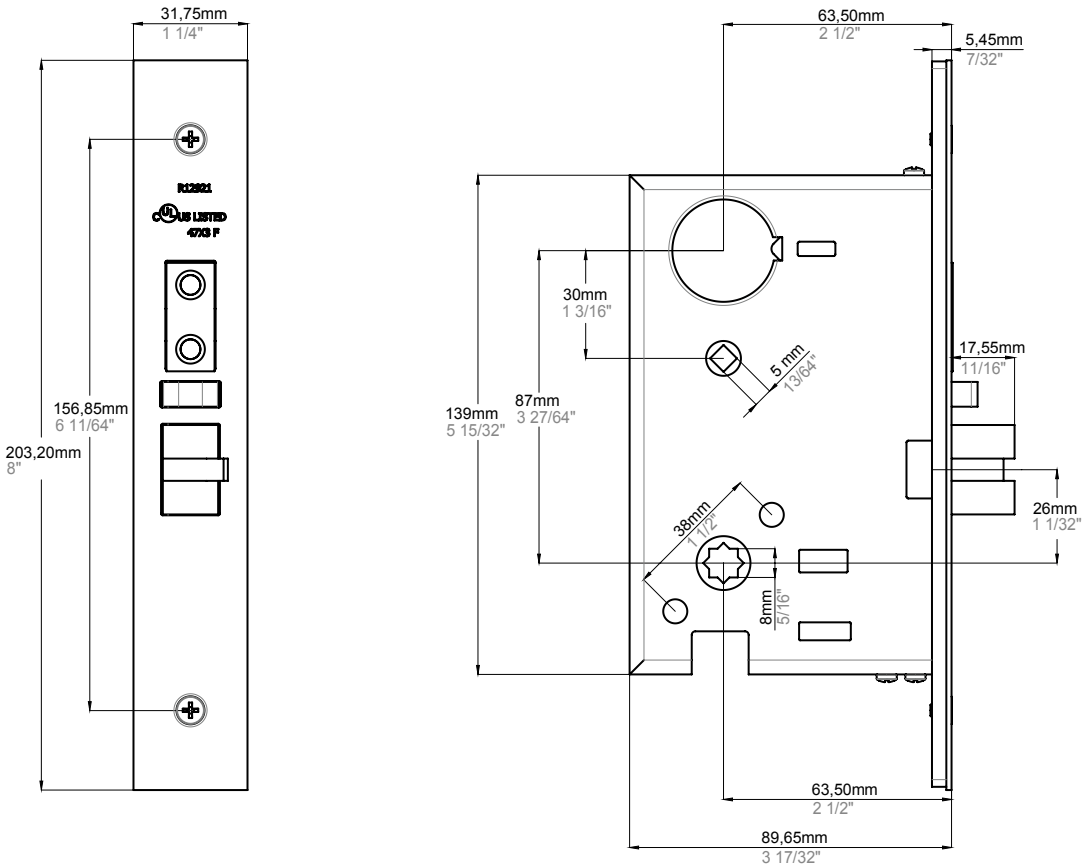
THE EXPOSED PARTS (DEADBOLT, LATCH BOLT, AUXILIARY LATCH AND BUTTONS) ARE IN FORGED BRASS AND FINISHED TO MATCH THE APPEARANCE OF THE STAINLESS STEEL FACEPLATE.

THE FIELD-REVERSIBLE DESIGN ALLOWS TO SWITCH HANDING ON SITE, WITHOUT OPENING THE LOCK CASE. 2MM.LCK MORTISE LOCKS FEATURE AN INDEPENDENT LEVER ROTATION.

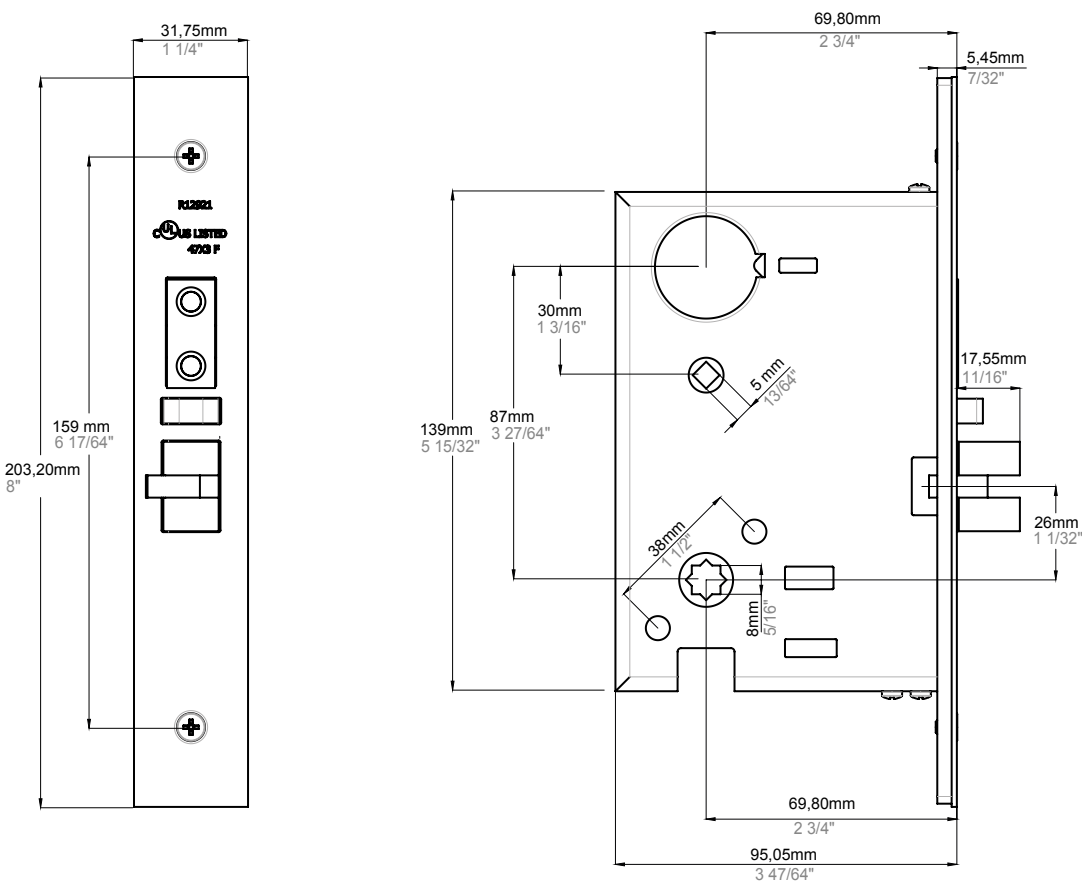


TECH SPECS

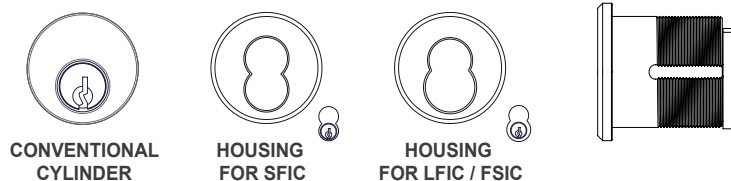
BACKSET 2 1/2



BACKSET 2 3/4



## AVAILABLE FORMATS:



PBA MORTISE LOCKS CAN WORK WITH EVERY BRAND OR MODEL OF MORTISE CYLINDERS WITH THE FOLLOWING CAMS INSTALLED:



## MORTISE CONVENTIONAL CYLINDER

**CIL.MOR.0001.00**  
MORTISE CONVENTIONAL CYLINDER BATON L=15/16" WITH YA CAM

OTHER BRANDS AVAILABLE ON REQUEST:  
**ARROW - CORBIN RUSSWIN - KABA - ILCO - MEDECO - SCHLAGE - SARGENT - YALE**



## MORTISE HOUSING FOR IC

AVAILABLE ON REQUEST MORTISE HOUSINGS FOR SFIC - LFIC / FSIC OF THE FOLLOWING BRANDS:  
**ARROW - CORBIN RUSSWIN - KABA - ILCO - MEDECO - SCHLAGE - SARGENT - YALE**



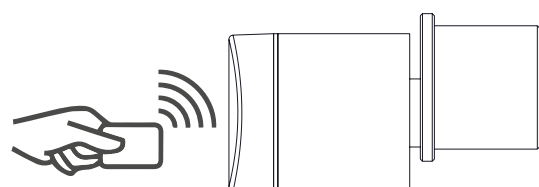
## CORE FOR SFIC HOUSING AND LFIC / FSIC HOUSING

AVAILABLE ON REQUEST SFIC - LFIC / FSIC CORES OF THE FOLLOWING BRANDS:  
**ARROW - CORBIN RUSSWIN - KABA - ILCO - MEDECO - SCHLAGE - SARGENT - YALE**

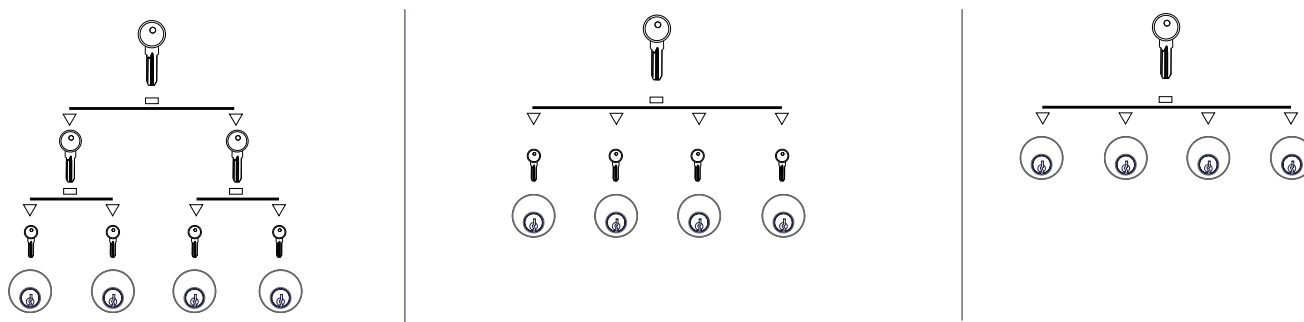


## DIGITAL MORTISE CYLINDER WITH CARD AVAILABLE ON REQUEST

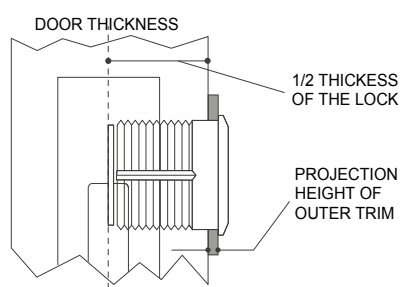
SUGGESTED BRAND:  
Salto Neo  
Salto Geo



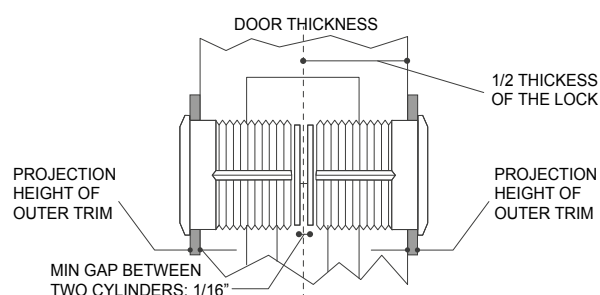
## SPECIAL APPLICATION WITH KEY SYSTEM ON REQUEST



## SINGLE CYLINDER INSTALLATION



## DOUBLE CYLINDERS INSTALLATION



COMPATIBLE  
LEVERS



Programma 2000  
Stainless Steel  
2MM.030.0UT8.xx  
2MM.030.00T4.xx

HEAVY-USE



Programma 2000  
Stainless Steel  
2MM.30S.0UT8.xx  
2MM.30S.00T4.xx

SATIN+BRIGHT



Programma 2000  
Stainless Steel  
2MM.030.0UT8.45  
2MM.030.00T4.45



Programma YOD  
Stainless Steel - Wood  
YOD.003.0UT8.xx  
YOD.003.00T4.xx



Programma YOD  
Stainless Steel Powder-coated - Wood  
2MH.030.UWT8.31



Programma YOD  
Stainless Steel Powder-coated - Wood  
2MH.030.UWT8.40



Programma YOD  
Stainless Steel - Leather  
YOD.030.0UT8.xx  
YOD.030.00T4.xx



Programma YOD  
Stainless Steel Powder-coated - Leather  
2MH.030.ULT8.31



Programma YOD  
Stainless Steel Powder-coated - Leather  
2MH.030.ULT8.40



Programma ALUMINUM  
Aluminum  
2AM.030.0UT8.xx  
2AM.030.00T4.xx



Programma ALUMINUM  
Aluminum - Leather  
2AM.030.ULT8.68



Programma ALUMINUM  
Aluminum  
2AM.001.0UT8.xx  
2AM.001.00T4.xx



Programma 2000  
Stainless Steel  
2MM.30B.0UT8.xx  
2MM.30B.00T4.xx



Programma CU  
Satin Stainless Steel - Copper  
2MU.030.0UT8.xx  
2MU.030.00T4.xx



Programma 2000  
Stainless Steel  
2MM.028.0UT8.xx  
2MM.028.00T4.xx



Programma YOD  
Stainless Steel - Leather  
YOD.028.0UT8.xx  
YOD.028.00T4.xx



Programma YOD  
Stainless Steel Powder-coated - Leather  
YOD.028.0UT8.xx  
YOD.028.00T4.xx



Programma YOD  
Stainless Steel Powder-coated - Leather  
YOD.028.0UT8.xx  
YOD.028.00T4.xx



Programma CU  
Satin Stainless Steel - Copper  
2MU.028.0UT8.xx  
2MU.028.00T4.xx



Programma 2000  
Stainless Steel  
2MM.28B.0UT8.xx  
2MM.28B.00T4.xx



Programma 300  
Polyamide 6  
3CC.326.0000.xx



Programma 2000  
Stainless Steel  
2MM.173.0UT8.xx  
2MM.173.00T4.xx



Programma ALUMINUM  
Aluminum  
2AM.173.0UT8.xx  
2AM.173.00T4.xx



Programma ALUMINUM  
Aluminum - Leather  
2AM.173.ULT8.68



Programma 2000  
Stainless Steel  
2MM.026.0UT8.xx  
2MM.026.00T4.xx



Programma 2000  
Stainless Steel  
2MM.027.0UT8.xx  
2MM.027.00T4.xx





Programma IT  
Stainless Steel  
0IT.151.0UT8.xx  
0IT.151.00T4.xx



Programma IT  
Stainless Steel  
0IT.152.0UT8.xx  
0IT.152.00T4.xx



Programma IT  
Stainless Steel  
0IT.153.0UT8.xx  
0IT.153.00T4.xx



Programma 2000  
Stainless Steel  
2MM.020.0UT8.xx  
2MM.020.00T4.xx



Programma 2000  
Stainless Steel  
2MM.20S.0UT8.xx  
2MM.20S.00T4.xx



Programma 2000  
Stainless Steel  
2MM.015.0UT8.xx  
2MM.015.00T4.xx



Programma 2000  
Stainless Steel  
2MM.022.0UT8.xx  
2MM.022.00T4.xx



Programma 2000  
Stainless Steel  
2MM.175.0UT8.xx  
2MM.175.00T4.xx



Programma 2000  
Stainless Steel  
2MM.174.0UT8.xx  
2MM.174.00T4.xx



Programma YOD  
Stainless Steel - Wood  
YOD.001.0UT8.xx  
YOD.001.00T4.xx



Programma STEELALU  
Stainless Steel - Aluminum  
STA.001.0UT8.xx



Programma STEELALU  
Stainless Steel - Aluminum  
STA.002.0UT8.xx



Programma STEELALU  
Stainless Steel - Aluminum  
STA.003.0UT8.xx



Programma YOD  
Stainless Steel - Wood  
YOD.002.0UT8.xx  
YOD.002.00T4.xx



Programma STEELALU  
Stainless Steel - Aluminum  
STA.004.0UT8.xx



Programma STEELALU  
Stainless Steel - Aluminum  
STA.005.0UT8.xx



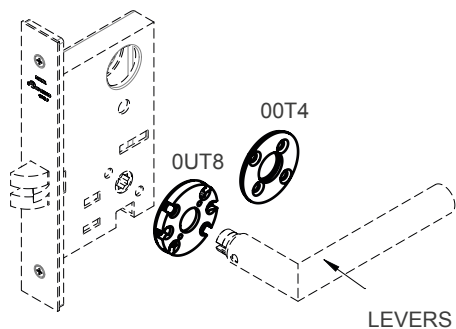
Programma STEELALU  
Stainless Steel - Aluminum  
STA.006.0UT8.xx

## COMPATIBILITY WITH LOCKS

### 2MM.LCK - US MORTISE LOCK

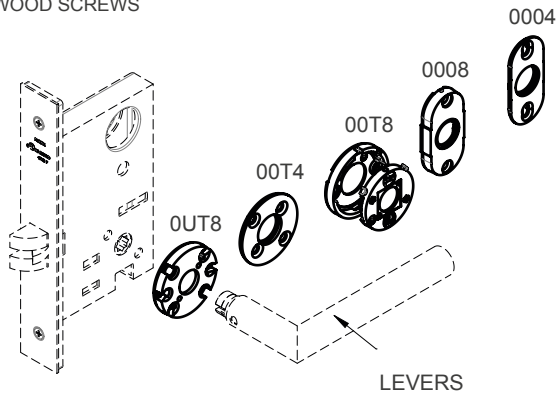
#### BTB FIXING

METRIC SCREWS + BUSHING



#### SINGLE FIXING

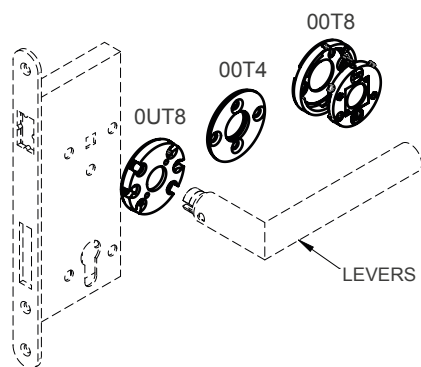
WOOD SCREWS



### EUROPEAN MORTISE LOCK \*

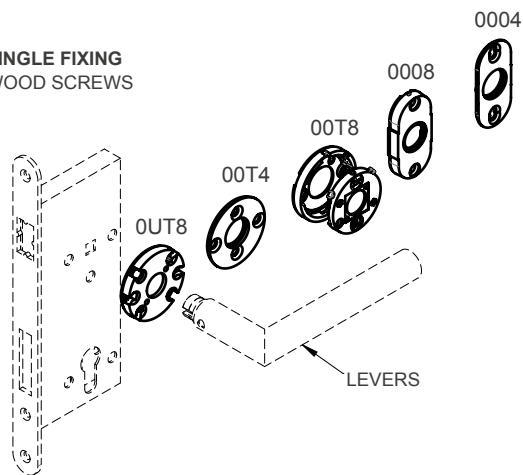
#### BTB FIXING

METRIC SCREWS + BUSHING



#### SINGLE FIXING

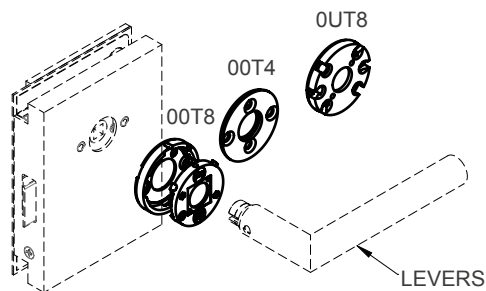
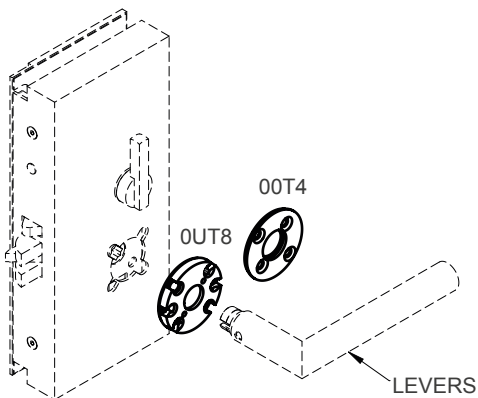
WOOD SCREWS



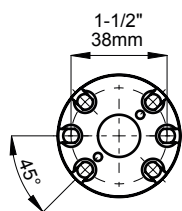
\* horizontal fixing holes

#### BTB FIXING

METRIC SCREWS + BUSHING

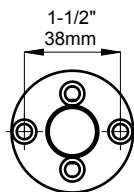
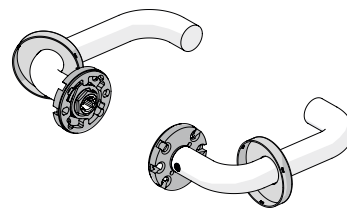


## AVAILABLE TRIMS



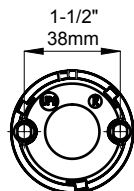
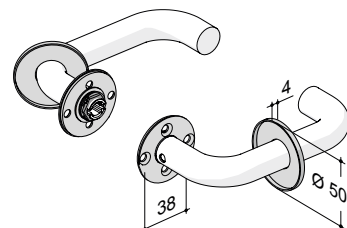
### OUT8 - ROUND ROSE 8 MM THICK WITH RETURN SPRING

SUITABLE FOR :  
SINGLE SIDE FIXING (SELF TAPPING SCREWS FOR WOOD DOOR)  
BACK TO BACK FIXING FOR LOCKSET WITH 38 mm (1-1/2")  
CTC HORIZONTAL HOLES OR 45° INCLINED HOLES



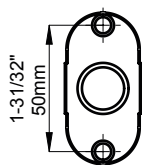
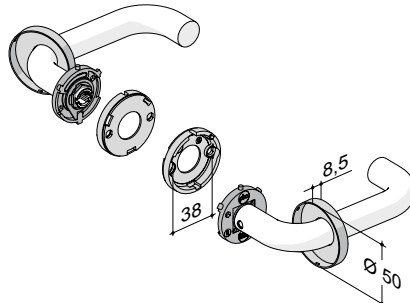
### 00T4 - ROUND ROSE 4 MM THICK WITHOUT RETURN SPRING (IT ROTATES FREELY)

SUITABLE FOR :  
SINGLE SIDE FIXING (SELF TAPPING SCREWS FOR WOOD DOOR)  
BACK TO BACK FIXING FOR LOCKSET WITH 38 mm (1-1/2")  
CTC HOLES (NO MATTER IF HORIZONTAL OR INCLINED)



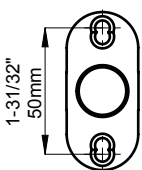
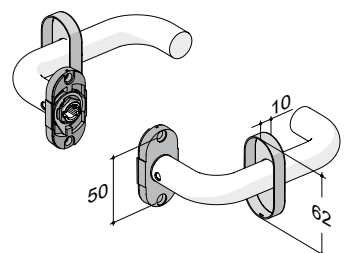
### 00T8 - ROUND ROSE 8 MM THICK WITH BLOK AND ROLL SYSTEM AND RETURN SPRING

SUITABLE FOR :  
SINGLE SIDE FIXING (SELF TAPPING SCREWS FOR WOOD DOOR)  
BACK TO BACK FIXING FOR LOCKSET WITH 38 mm (1-1/2")  
CTC HORIZONTAL HOLES



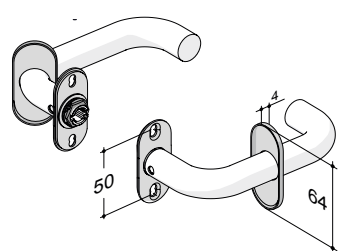
### 0008 - OVAL ROSE 8 MM THICK WITH RETURN SPRING

SUITABLE FOR :  
SINGLE SIDE FIXING (SELF TAPPING SCREWS FOR WOOD DOOR)  
BACK TO BACK FIXING FOR LOCKSET WITH 50 mm (1-31/32")  
CTC VERTICAL HOLES

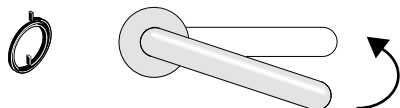


### 0004 - OVAL ROSE 4 MM THICK WITHOUT RETURN SPRING (IT ROTATES FREELY)

SUITABLE FOR :  
SINGLE SIDE FIXING (SELF TAPPING SCREWS FOR WOOD DOOR)  
BACK TO BACK FIXING FOR LOCKSET WITH 50 mm (1-31/32")  
CTC VERTICAL HOLES



## HANDLE FOR MORTISE WITH RETURN SPRING



### RETURN SPRING

The return spring brings back the lever handle in horizontal position after use

### MOLLA DI RITORNO

La molla di ritorno riporta la leva in posizione orizzontale dopo l'utilizzo

## FIXING OPTIONS

### SINGLE SIDE FIXING



### BACK TO BACK FIXING



## SPINDLE OPTIONS

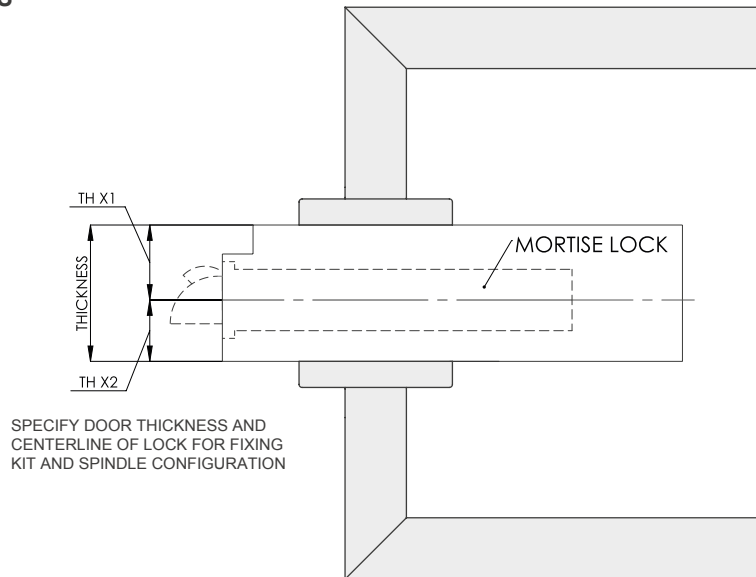
### SWIVEL SPINDLE



### SOLID SPINDLE



## MORTISE LOCKS



**TITLE 24 COMPLIANT LEVERSET - CALIFORNIA FIRE CODE SECTION 12-10-202**

**Levers.** The lever of lever-actuated levers or locks shall be curved with a return to within 1/2" of the face of the door to prevent catching on the clothing of persons during egress.

## TITLE 24 COMPLIANCE FOR PBA PRODUCTS

SOLID DOORS (WOOD or METAL):

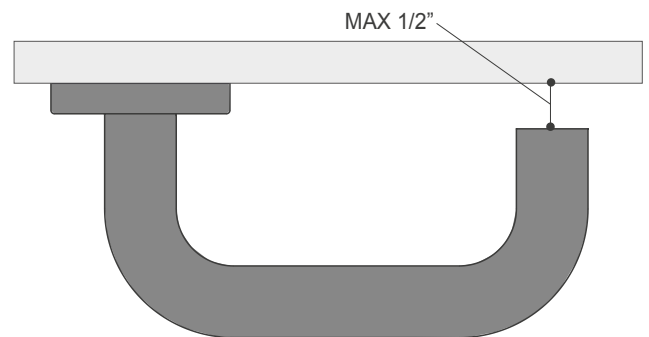
2MM.28B.00T4.xx  
2MM.30B.00T4.xx  
2MM.28B.0UT8.xx  
2MM.30B.0UT8.xx

FRAMELESS GLASS DOOR WITH HGU LOCK :

2MM.28U.HGT4.xx  
2MM.30B.HGT4.xx  
2MM.28U.HGT8.xx.1(.2)  
2MM.30U.HGT8.xx.1(.2)

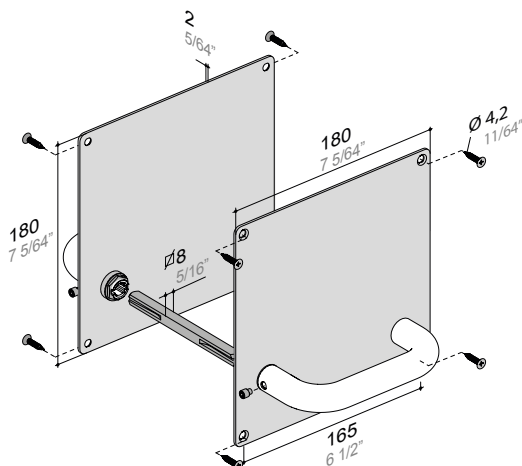
FRAMELESS GLASS DOOR WITH HGL LOCK :

2MM.28B.HGT8.xx.1(.2)  
2MM.30B.HGT8.xx.1(.2)



\*SOLID DOOR TYPICAL INSTALLATION SHOWN

## HANDLE ON PLATE WITHOUT RETURN SPRING FOR MORTISE LOCKS



## PLATES

Plates: rectangular-square with or without ball-bearings in stainless steel AISI 316L, thickness 2 mm. The ball-bearings is connected to the plate.

