

dba

WE ARE THE ONES WHO OPEN DOORS OF UNIVERSITIES, STORES, HOSPITALS, AND BUILDINGS, THAT SHIFTED FROM PLACES TO ICONS. WE ARE THE ONES WHO “EVEN A PULL TELLS WHO WE ARE, SO LET’S DO IT EVEN BETTER”; THOSE WHO “SUSTAINABILITY IS CONSISTENCY UNVEILING IN THE LONG TERM, SO LET’S PAY ATTENTION NOW”. WE ARE THE ONES WHO TEAM UP WITH THE BEST PARTNERS, AND THOSE WHERE WOMEN ARE LEADERS. WE ARE THE ONES WHO EMBELLISH THE FUNCTION OF A GRAB BAR IN A BATHROOM, OF A DRAWER PULL. STRONG AS STEEL, CONSTANTLY-CHANGING AS COPPER. WE ARE THE ONES WHO LET YOU IN AND OUT, GO, STAY AND COME BACK. WE ARE THE ONES WHO NEVER MAKE JUST FOR THE SAKE OF MAKING, BUT ALWAYS MOVED BY THE AMBITION OF CREATING “GOOD” OBJECTS FOR ALL.



NYCXDESIGN AWARDS  
FINALIST



EUROPEAN PRODUCT DESIGN AWARD  
WINNER



EUROPEAN PRODUCT DESIGN AWARD  
HONORABLE MENTION



GLOBAL FUTURE DESIGN AWARDS  
WINNER



NYCXDESIGN AWARDS  
FINALIST



#METROPOLISLIKES NYCXDESIGN  
WINNER



GLOBAL FUTURE DESIGN AWARDS  
THIRD AWARD



IDEA INTERNATIONAL DESIGN  
EXCELLENCE AWARDS  
FINALIST



V ADI CERAMICS & BATHROOM  
DESIGN AWARD  
SPECIAL MENTION



XXIII COMPASSO D'ORO AWARD  
NOMINATION



REDDOT DESIGN AWARD  
WINNER



reddot design award

REDDOT DESIGN AWARD  
NOMINATION



reddot design award

XXI COMPASSO D'ORO AWARD  
NOMINATION



## pba FOR LEED® CERTIFICATION

OUR CONTRIBUTION TO THE EFFICIENCY AND SUSTAINABILITY OF BUILDINGS

LEED® (LEADERSHIP IN ENERGY ENVIRONMENTAL DESIGN) IS A VOLUNTARY CERTIFICATION SYSTEM FOR THE MANAGEMENT, DESIGN AND CONSTRUCTION OF BUILDINGS THAT ARE SUSTAINABLE FROM A SOCIAL, ENVIRONMENTAL AND ECONOMIC POINT OF VIEW AND IN TERMS OF THE WELLBEING OF THE USERS.

**pba PRODUCTS CONTRIBUTE TOWARD SATISFYING PREREQUISITES AND CREDITS UNDER LEED®.**

INTEGRATED PROCESS	<b>IP</b>	
MATERIALS AND RESOURCES	<b>MR</b>	
INDOOR ENVIRONMENTAL QUALITY	<b>EQ</b>	
INNOVATION	<b>IN</b>	



## DECLARE LABEL

OUR DECLARE "RED LIST FREE" PRODUCTS FOR SUSTAINABLE BUILDINGS

THE **DECLARE LABEL** LISTS THE MATERIALS IN A PRODUCT TO DISCLOSE WHAT THEY ARE MADE OF, WHERE THEY ARE PRODUCED AND HOW THEY WILL BE DISPOSED OF. THIS LABEL IS A CALL FOR RESPONSIBILITY TO PRODUCERS AND USERS ALIKE.

THE **DECLARE LABEL** IS A GUIDE TO SELECT PRODUCTS, PROVIDES INFORMATION IN A SIMPLE AND TRANSPARENT WAY AND RISES ABOVE GREENWASHING.

DECLARE TAKES COMPLEX CHEMICAL ANALYSIS AND RAW MATERIAL SOURCE LOCATION INFORMATION TO ESTABLISH THAT PRODUCTS ARE FREE FROM HAZARDOUS CHEMICALS. ALL DECLARE LABEL OF pba PRODUCTS ARE RED LIST FREE.

## INCLUSION

INCLUSIVENESS IS FOR EVERYONE, IT DOES NOT IDENTIFY A SPECIFIC SKILL, IT DOES NOT SEEK SOLUTIONS THAT FLATTEN NEEDS IN A VISION OF “COMMON NECESSITY”, ON THE CONTRARY IT VALUES THE BEAUTY, THE VARIETY AND THE UNIQUENESS OF PEOPLE. ONLY UNIVERSAL VALUES CAN LAY THE FOUNDATION OF SUCH AN AMBITIOUS BUILDING: INCLUSIVENESS, BEAUTY FOR ALL, RESPONSIBILITY FOR THE CHOICES MADE ON WHAT, WITH WHOM AND HOW, AND SUSTAINABILITY. BECAUSE WE CANNOT AVOID TO BE SUSTAINABLE IF WE TRULY BELIEVE IN THE “FOR ALL”.

## 7 PRINCIPLES OF UNIVERSAL DESIGN



01  
EQUITABLE  
USE

THE DESIGN IS USEFUL AND MARKETABLE TO PEOPLE WITH DIVERSE ABILITIES.



02  
FLEXIBILITY  
IN USE

THE DESIGN ACCOMMODATES A WIDE RANGE OF INDIVIDUAL PREFERENCES AND ABILITIES.



03  
SIMPLE AND  
INTUITIVE USE

USE OF THE DESIGN IS EASY TO UNDERSTAND, REGARDLESS OF THE USER’S EXPERIENCE, KNOWLEDGE, LANGUAGE SKILLS, OR CURRENT CONCENTRATION LEVEL.



04  
PERCEPTIBLE  
INFORMATION

THE DESIGN COMMUNICATES NECESSARY INFORMATION EFFECTIVELY TO THE USER, REGARDLESS OF AMBIENT CONDITIONS OR THE USER’S SENSORY ABILITIES.



05  
TOLERANCE  
FOR ERROR

THE DESIGN MINIMIZES HAZARDS AND THE ADVERSE CONSEQUENCES OF ACCIDENTAL OR UNINTENDED ACTIONS.



06  
LOW PHYSICAL  
EFFORT

THE DESIGN CAN BE USED EFFICIENTLY AND COMFORTABLY AND WITH A MINIMUM OF FATIGUE. LESS THAN 5 POUNDS.



07  
SIZE AND SPACE FOR  
APPROACH AND USE

APPROPRIATE SIZE AND SPACE IS PROVIDED FOR APPROACH, REACH, MANIPULATION, AND USE, REGARDLESS OF USER’S BODY SIZE, POSTURE, OR MOBILITY.



DOOR HARDWARE



MILLWORK PULLS



BATHROOM DESIGN FOR ALL



BATHROOM ACCESSORIES AND HANDRAIL



OFFICE



HOSPITALITY



HEALTHCARE



PUBLIC SPACES



MIXED USED



RESIDENTIAL



- 1 HOSPITAL
- 2 RESIDENCE
- 3 SPORTS COURT
- 4 AIRPORT
- 5 TRAIN STATION
- 6 MALL
- 7 REST HOME
- 8 EXHIBITION CENTER
- 9 OFFICE BUILDING
- 10 HOTEL
- 11 SPA & WELLNESS CENTRE
- 12 STADIUM
- 13 SWIMMING POOL
- 14 VILLAS
- 15 BANK
- 16 UNIVERSITY
- 17 CAMPUS
- 18 LIBRARY
- 19 MUSEUM
- 20 AUDITORIUM
- 21 CONCERT HALL



PULLS

LEVERS  
& LOCKS



LOCKING  
LADDER PULLS

TOCCO COLLECTION  
SENSORY SENSITIVE  
HARDWARE



SINGLE-MOTION  
SAFE EGRESS PULL

LOCKSETS FOR  
GLASS DOOR





HANDS-FREE  
PULLS

DESIGN  
FOR ALL



INTEGRATED  
DOOR PULLS

BATHROOM  
ACCESSORIES



CABINET &  
MILLWORK HARDWARE

HANDRAIL







DOOR HARDWARE



Vera Wang San Francisco US



Vera Wang  
Rolex  
Avon  
Mercedes Benz  
Giorgio Armani  
Gucci Group  
Missoni  
Les Carmes Haut  
Autogrill  
Pepsi

San Francisco  
Geneve  
New York  
Roma  
Hong Kong  
Novara  
Paris  
Brion  
Milano  
Purchase

PULLS

Courtesy of STUDIOS Architecture, Photography by Eric Laignel



Sony Headquarters New York US

Sony Headquarters  
McLaren Technology Centre  
Pirelli Headquarter  
Square Space  
Heidelberg Technology Park  
Hewlett Packard European Headquarter  
BNL  
Royal Bank Of Scotland  
Cantine Antinori  
Gensler Office

New York  
Woking  
Milano  
New York  
Heidelberg  
Dublin  
Roma  
Los Angeles  
Firenze  
Abu Dhabi



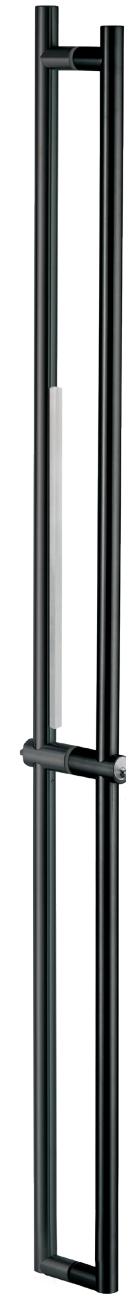
LOCKING LADDER PULLS



Campus EDF Saclay France

Campus EDF  
 Yacht Club de Monaco Marina  
 Haus Augarten  
 CAA Creative Artists Agency  
 Campus Kiel  
 Pflegeheim Forum der Senioren  
 Klinikum Berlin-Buch  
 Ben Gurion Airport  
 Universitätsklinikum Wuppertal  
 Cambridge University

Saclay  
 Montecarlo  
 Wien  
 New York  
 Lübeck  
 Viernheim  
 Berlin  
 Tel Aviv  
 Wuppertal  
 New York

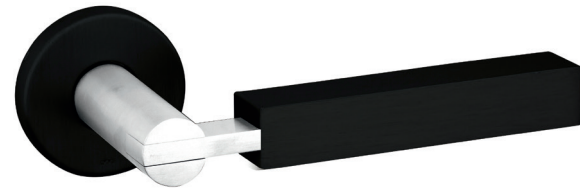


ADA

SINGLE-MOTION SAFE EGRESS PULL



Fondazione Prada Milano Italy



Fondazione Prada  
Shanghai Disable Centre  
Torre Isozaki  
Aéroport Charles De Gaulle  
Lega Del Filo d'Oro  
Torre Galfa  
Auditorio De Tenerife  
Reggia di Venaria Reale  
Sede Social Sanitas  
Expo 2015

Milano  
Shanghai  
Milano  
Paris  
Osimo  
Milano  
Tenerife  
Torino  
Madrid  
Milano

LEVERS



Private House Vicenza Italy



Private House  
CityLife  
Private Yacht  
Attic  
Studio Personal Trainer  
Private Apartment  
Luxury Residence  
Casa-Studio  
Penthouse  
Chalet

Vicenza  
Milano  
Portofino  
Los Angeles  
Bassano del Grappa  
New York  
Venezia  
Firenze  
Amsterdam  
Cortina

LEVERS AND PULLS



SQ Space Headquarters New York US



SQ Space Headquarters  
Hart Showroom  
Haworth Showroom  
U-Bora Towers  
Gemological Institute Of America  
The Village  
Rothschild  
PTC  
4A's  
Cartier

New York  
Houston  
New York  
Dubai  
New York  
Lione  
New York  
Boston  
New York  
Madrid

LOCKSET FOR GLASS DOOR



Conference Room Milano Italy



Osservatorio Fondazione Prada	Milano
Altaplaza Mall	Ciudad de Panamá
Cité Internationale de la Langue Française	Paris
Nuovo Campus Bologna Business School	Bologna
Ever Green Tower	Tirana
Arena di Verona	Verona
Wo Hop Shek Crematorium	Hong Kong
Louis Vuitton Boutique	Milano
UKSH Campus Kiel	Kiel
Centro Nazionale della Fondazione Lega del Filo d'Oro	Osimo

TOCCO COLLECTION SENSORY SENSITIVE HARDWARE



ADA



SPA Center New York US



- La Hacienda Alcaidesa Links Golf Resort
- Carl Friedrich Flemming Klinik
- City of Dreams Mediterranean
- Radisson Blu Hotel
- Hotel Hyatt Regency
- Hotel Sheraton Orano
- The Residences Mandarin Oriental Mayfair
- Illy Café
- Hotel Palazzo Tirso
- Bulgari Hotel
- Cádiz
- Schwerin
- Limassol
- Durban Umhlanga
- Saint Julian
- Orano
- London
- Milano
- Cagliari
- Roma

HANDS-FREE PULLS

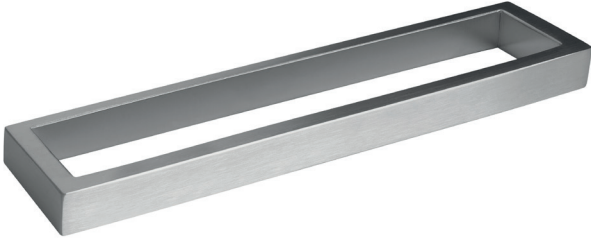


MILLWORK PULLS

ADA



Morning Consultant Headquarters New York US



Tik Tok  
Walker & Dunlop Headquarters  
Arapiles 13  
Morning Consult Headquarters  
Black Office  
San Pellegrino Flagship Factory  
Google St. John's Terminal  
The Spiral  
Stream Building  
HIS new tech

Los Angeles  
Bethesda  
Madrid  
Washington  
Clichy  
San Pellegrino Terme  
New York  
New York  
Paris  
Brussels

CABINET & MILLWORK HARDWARE



BATHROOM DESIGN FOR ALL



Ospedale Dell'Angelo Mestre Italy



Ospedale Dell'Angelo  
 National University Hospital  
 Ospedale Unico Alto Vicentino  
 Ospedale Civile Maggiore  
 Centre Hospitalier De Roubaix  
 Ospedale San Bartolomeo  
 Ospedale Niguarda  
 Sunnybrook Hospital  
 Ospedale Di Gorizia  
 Ospedale Di Padova

Mestre  
 Singapore  
 Santorso  
 Verona  
 Roubaix  
 Trento  
 Milano  
 Toronto  
 Gorizia  
 Padova

DFA  
 DESIGN.  
 FOR ALL  
 ♀ ♂ ♿

GRAB BARS



Luxury Hotel Vicenza Italy



Hotel Mandarin Oriental  
Hotel Port Palace  
La Rosina Hotel  
Hotel Norman  
Hotel Excelsior Gallia  
Conservatorium Hotel  
Hotel Montemartini  
Hotel Missoni  
Hotel Le Meridien  
Hotel Le Sereno

Milano  
Montecarlo  
Vicenza  
Tel Aviv  
Milano  
Amsterdam  
Roma  
Edimburgo  
Barcelona  
Como

DFA  
DESIGN.  
FOR ALL  


SEATS

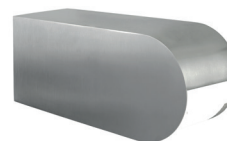


BATHROOM ACCESSORIES AND HANDRAIL

ADA



VIP Lounge Private Company Los Angeles US



The Museum of Modern Art MoMA  
Grande Arche, La Défense  
Viola Park  
Portal La Dehesa Mall  
Hotel Palazzo Tirso  
Klinikum Stuttgart  
Hav Centre Socioculturel et Sportif Danton  
Cittadella della Salute  
Centre Aquatique de Carvin  
Larvotto Regeneration Project

New York  
Paris  
Firenze  
Lo Barnechea  
Cagliari  
Stuttgart  
Havre  
Pordenone  
Carvin  
Monaco

DFA  
DESIGN.  
FOR ALL  


BATHROOM ACCESSORIES





MAXXI Roma Italy



Nuovo campus Architettura Politecnico  
ADP Aéroports de Paris  
Helios Amper-Klinikum  
Scuola Gabelli  
IULM  
LinkedIn Headquarter  
PGA Golf Hilton Hotel  
Hotel Ritz-Carlton Los Cabos  
Ospedale Sant'Anna  
Solar Carve, Aquarian Holdings & RTW

Milano  
Paris  
Dachau  
Belluno  
Dubai  
Milano  
Madrid  
San José del Cabo  
Como  
New York

DFA  
DESIGN.  
FOR ALL  

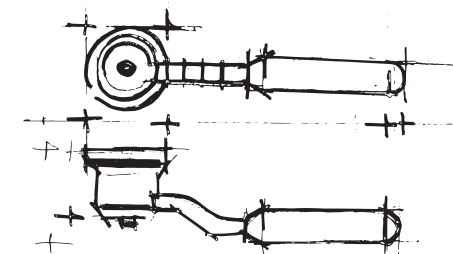
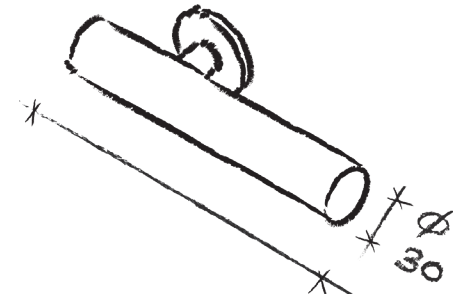
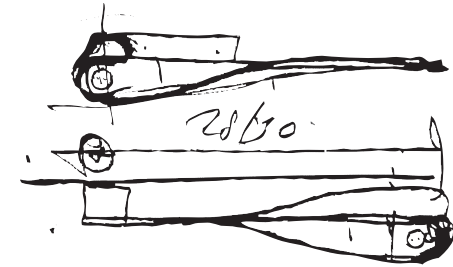

HANDRAIL

Crédit photo JP Porcher



Les Dunes Paris France

pba COLLABORATES WITH THE MAJOR ARCHITECTURAL FIRMS WITH A GLOBAL PRESENCE TO DESIGN NEW PRODUCTS WITH THE GOAL TO BOTH EXPAND THE HARDWARE AND BATHWARE OFFER, AND TO OPEN NEW BUSINESS WITH INNOVATIVE PRODUCTS THAT INTEGRATE TECHNICAL SOLUTIONS WITH AESTHETICAL AND FUNCTIONAL SOLUTIONS.



# MATERIALS, FINISHING AND DETAILS

## STAINLESS STEEL

PBA IS THE PREMIER BRAND OF AISI 316L STAINLESS STEEL, THE HARDEST, MOST RESISTANT AND ELASTIC STEEL. THE STAINLESS STEEL AISI 316L IS AN AUSTENITIC ALLOY. IT IS DISTINGUISHED FROM OTHERS INOXIDIZABLE STEELS BY THE HIGH PERCENTAGE OF MOLYBDENUM WHICH GIVES IT A SPECIAL RESISTANCE: TO PITTING CORROSION AND STRESS CORROSION. IN THIS KIND STAINLESS STEEL THE NICKEL'S PRESENCE IS INCREASED IN ORDER TO GUARANTEE STABILITY. FURTHER, THE "L" STAYS FOR LOW CARBON AND IN FACT THE QUANTITY IS LESS OR EQUAL TO 0,03%.



## ALUMINIUM

PBA USES ALUMINIUM ALLOY 6060, A MEDIUM STRENGTH HEAT TREATABLE ALLOY WITH A STRENGTH SLIGHTLY LOWER THAN 6005A. IT HAS VERY GOOD CORROSION RESISTANCE, VERY GOOD WELDABILITY AND GOOD COLD FORMABILITY. IT IS COMMONLY USED FOR COMPLEX CROSS SECTIONS AND HAS VERY GOOD ANODIZING RESPONSE. ALLOY: EN-AW 6060. FORMS: EXTRUDED ROUND ROD/BAR. CHARACTERISTICS-PROPERTIES: VERY GOOD CORROSION RESISTANCE, MEDIUM STRENGTH, COMPLEX SECTIONS, ANODISING QUALITY. APPLICATIONS: ARCHITECTURAL SECTIONS, FRAMES, LIGHTINGS, RAILLING, LADDERS, FURNITURE, FENCES, FLOORING.



## NYLON POLIAMIDE 6

THERMOPLASTIC RESIN (POLYAMIDE 6). HIGH MECHANICAL RESISTANCE. TENACITY. RESISTANCE TO WEAR AND ABRASION. ANTISTATIC, WITH GOOD INSULATING POWER AND GOOD RESISTANCE TO CREEPING CURRENTS. GOOD STABILITY TO CHEMICAL AGENTS SUCH AS HYDROCARBONS, OILS AND FATS; GOOD RESISTANCE TO NUMEROUS CHEMICAL AGENTS SUCH AS SOLVENTS, DETERGENTS AND DISINFECTANTS. POOR THERMAL CONDUCTION. CLASSIFIED AS SELF-EXTINGUISHABLE INTO CATEGORY UL 94V-2. IT DOES NOT GENERATE TOXIC GASES. PHYSIOLOGICALLY INNOCUOUS. COMPLIANCE WITH THE REQUIREMENTS OF DIRECTIVE 2011/65/EU. IT IS ALSO FREE OF LEAD (PB), MERCURY (HG), HEXAVALENT CHROMIUM (CR+6), POLYBROMINATED BIPHENYLS (PBB), POLYBROMINATED DIPHENYL ETHERS (PBDE) AND CADMIUM (CD).



## LEATHER

GENUINE LEATHER IS AN EXTREMELY DURABLE MATERIAL OFFERING HIGH ELASTICITY, SOFTNESS AND LIGHTNESS. THIS FINE, NATURAL MATERIAL MAY DISPLAY MARKS AND VARIATIONS SUCH AS LINES AND WRINKLES, AND COLOR DIFFERENCES, ALL SIGNATURES THAT ENHANCE ITS BEAUTY AND EXCELLENCE.



## WOOD

WOOD IS A NATURAL LIGHTWEIGHT AND DURABLE FIBER; IT IS A GOOD INSULATING MATERIAL THAT RETAINS MOISTURE. THE MAIN PHYSICAL PROPERTIES OF WOOD ARE DURABILITY, HARDNESS, STIFFNESS AND DENSITY. PURE WOOD IS A REFINED AND NATURAL PRODUCT TOTALLY REGENERABLE AND RECYCLABLE. MARKS, GRAINS AND COLOR VARIATIONS ARE DISTINCTIVE FEATURES THAT GUARANTEE ITS AUTHENTICITY.



## ECONYL® REGENERATED NYLON AND STAINLESS STEEL AISI 316L

ECONYL® IS A 100% REGENERATED NYLON FROM WASTE SUCH AS FISHING NETS, OLD CARPETS DESTINED FOR LANDFILLS, PLASTIC COMPONENTS AND FABRIC SCRAPS FROM MILLS. AS WELL AS BEING A SOLUTION ON WASTE, ECONYL® REGENERATED NYLON IS ALSO BETTER WHEN IT COMES TO CLIMATE CHANGE. IT REDUCES THE GLOBAL WARMING IMPACT OF NYLON BY UP TO 90% COMPARED WITH THE MATERIAL FROM OIL.





316L STAINLESS STEEL HARDWARE

LEED	REACH
<p>316L stainless steel products contribute to LEED credits.</p>	<p>pba has fully inventoried chemical ingredients to 100 ppm and assess each substance against the Authorization list - Annex XIV, the Restriction list - Annex XVII and the SVHC candidate list, proving that no such substance is included.</p>
RED LIST FREE DECLARE LABEL	
<p>316L stainless steel products offer Red List Free Declare Label.</p>	

PERCENTAGE OF PRE-CONSUMER AND POST-CONSUMER FOR THE RECYCLED CONTENT

PRODUCTS FULLY RECYCLABLE AT THE END OF THEIR LIFE

VOCs



316L stainless steel products have been designed and produced to be fully disassembled therefore 100% recyclable at the end of their life.



The 316L stainless steel products do not include integral organic based surface coatings, binders, or sealants. Therefore products are inherently non emitting sources of VOCs and are considered fully compliant.



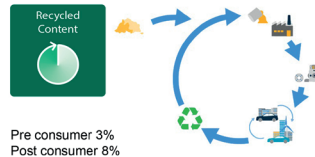
POLYAMIDE 6 HARDWARE

LEED	REACH
<p>Polyamide 6 products contribute to LEED credits.</p>	<p>pba has fully inventoried chemical ingredients to 100 ppm and assess each substance against the Authorization list - Annex XIV, the Restriction list - Annex XVII and the SVHC candidate list, proving that no such substance is included.</p>
CYTOTOXICITY	
<p>CYTOTOXICITY TEST</p> <p>Cytotoxicity test to DIN EN ISO 10993-5</p>	

PERCENTAGE OF PRE-CONSUMER AND POST-CONSUMER FOR THE RECYCLED CONTENT

PRODUCTS FULLY RECYCLABLE AT THE END OF THEIR LIFE

VOCs



Polyamide 6 products have been designed and produced to be fully disassembled therefore 100% recyclable at the end of their life.



ISTITUTO GIORDANO

pba washroom accessories has been tested for emission of volatile organic compounds (VOC) using testing chamber method in accordance with UNI EN ISO 16000-9:2006.



ALUMINUM HARDWARE

LEED	REACH
<p>Aluminum products contribute to LEED credits.</p>	<p>pba has fully inventoried chemical ingredients to 100 ppm and assess each substance against the Authorization list - Annex XIV, the Restriction list - Annex XVII and the SVHC candidate list, proving that no such substance is included.</p>
RED LIST FREE DECLARE LABEL	
<p>Aluminum products offers Red List Free Declare Label.</p>	

PERCENTAGE OF PRE-CONSUMER AND POST-CONSUMER FOR THE RECYCLED CONTENT

PRODUCTS FULLY RECYCLABLE AT THE END OF THEIR LIFE

VOCs



Aluminum products have been designed and produced to be fully disassembled therefore 100% recyclable at the end of their life.



The Aluminum products do not include integral organic based surface coatings, binders, or sealants. Therefore products are inherently non emitting sources of VOCs and are considered fully compliant.



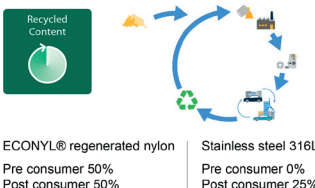
ECONYL® REGENERATED NYLON AND 316L STAINLESS STEEL HARDWARE

LEED	REACH
<p>ECONYL® regenerated nylon and 316L stainless steel products contribute to LEED credits.</p>	<p>pba has fully inventoried chemical ingredients to 100 ppm and assess each substance against the Authorization list - Annex XIV, the Restriction list - Annex XVII and the SVHC candidate list, proving that no such substance is included.</p>
RED LIST FREE DECLARE LABEL	
<p>ECONYL® regenerated nylon and 316L stainless steel products offer Red List Free Declare Label.</p>	

PERCENTAGE OF PRE-CONSUMER AND POST-CONSUMER FOR THE RECYCLED CONTENT

PRODUCTS FULLY RECYCLABLE AT THE END OF THEIR LIFE

VOCs



ECONYL® regenerated nylon and 316L stainless steel products are made of fully recyclable 316L stainless steel and fully regenerated and fully recyclable ECONYL®. Products can be completely dismantled for recycling.



The ECONYL® regenerated nylon and 316L stainless steel products do not include integral organic based surface coatings, binders, or sealants. Products are non emitting sources of VOCs and are considered fully compliant.

**pba S.p.A.**

T +39 0424 5451 [info@pba.it](mailto:info@pba.it) [www.pba.it](http://www.pba.it)

**pba USA, Inc.**

T +1 212 255 4605 [office@pba-usa.us](mailto:office@pba-usa.us) [www.pba.it](http://www.pba.it)

**pba Deutschland GmbH**

T +49 2151 82006 0 [info@de.pba.it](mailto:info@de.pba.it) [www.pba.it](http://www.pba.it)