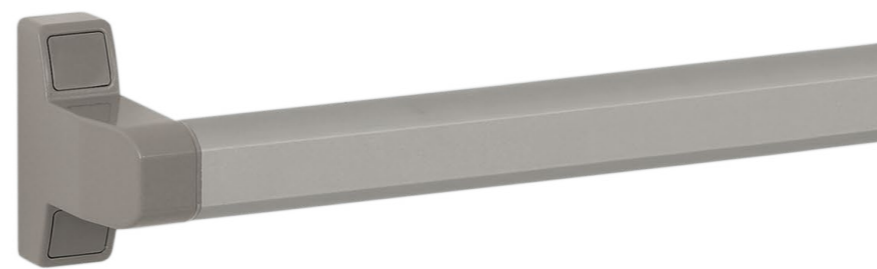


Aluminum products contribute to LEED credits.



Aluminum products have an Environmental Product Declaration (EPD).



**ALUMINUM BATHWARE**

**CYTOTOXICITY**

**CYTOTOXICITY TEST**



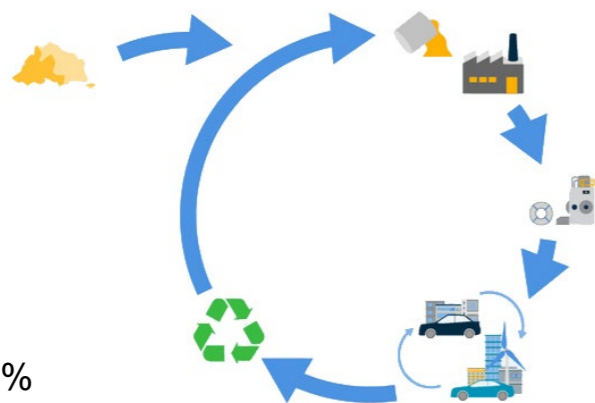
Cytotoxicity test to DIN EN ISO 10993-5

\*aluminum

**PERCENTAGE OF PRE-CONSUMER AND POST-CONSUMER FOR THE RECYCLED CONTENT**



Pre consumer 31%  
Post consumer 55%



**PRODUCTS FULLY RECYCLABLE AT THE END OF THEIR LIFE**

Aluminum products have been designed and produced to be fully disassembled therefore 100% recyclable at the end of their life.



**VOCs**

The Aluminum products do not include integral organic based surface coatings, binders, or sealants. Therefore products are inherently non emitting sources of VOCs and are considered fully compliant.

**REACH**

pba has fully inventoried chemical ingredients to 100 ppm and assess each substance against the Authorization list - Annex XIV, the Restriction list - Annex XVII and the SVHC candidate list, proving that no such substance is included.